



## 2023 Trail Project Overview

OC Parks Trails Subcommittee — January 11, 2024





# Overview



- Outline of Highlighted Projects
- Individual Project Updates
- Conclusion

# 2023 Trail Projects



## Regional Trails

- Santa Ana River Regional Trail Bridge Repairs
- Aliso Creek Bikeway Repairs and Slope Stabilization
- Peters Canyon Regional Trail Connection
- Talega Regional Trail Addition
- OC Loop Coyote Creek Connection

## Parks

- Saddleback Wilderness and Gypsum Wilderness Trail Network Additions
- Craig Regional Park Bike Park Addition
- Peters Canyon Regional Park East Ridge View Trail Reroute
- Irvine Regional Park Adventure Trail Enhancement

# Regional Trails — Santa Ana River Regional Trail Bridge Repairs

## Construction Alert



### SANTA ANA RIVER TRAIL BRIDGE REPAIRS

OC Parks in collaboration with OC Public Works will complete repairs of 3 Santa Ana River Trail Bridges. Work consists of removal and replacement of bridge decks and handrailing. Bridge #1 in the City of Anaheim is closest to Imperial Highway bridge crossing over the Santa Ana River. Bridge #2 in the City of Santa Ana is closest to 17<sup>th</sup> Street bridge crossing over the Santa Ana River. Bridge #3 in the City of Costa Mesa is closest to Adams Avenue bridge crossing over the Santa Ana River. Each bridge repair work requires full bridge closure and detour will be set up. Area motorists and other road users may experience delays when traveling through the project area during working hours. Traffic control measures, such as construction and detour signage and flag personnel will be present.

#### WHEN

**Anticipated Construction Duration:**  
Bridge #2 June 6, 2022 – August 22, 2022  
Bridge #3 August 10, 2022 – November 23, 2022  
Bridge #1 November 11, 2022 – January 24, 2023

**Working Days/Hours:**  
Monday – Friday, 7:00am to 5:00pm

#### WHERE

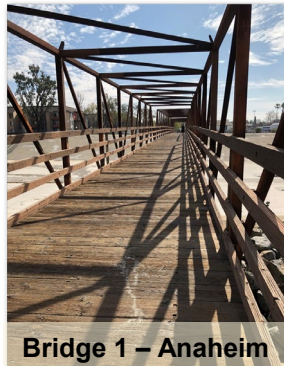
**Bridge #1** - City of Anaheim closest to Imperial Hwy bridge crossing over the Santa Ana River  
**Bridge #2** - City of Santa Ana closest to 17<sup>th</sup> Street bridge crossing over the Santa Ana River  
**Bridge #3** - City of Costa Mesa closest to Adams Avenue bridge crossing over the Santa Ana River



#### PROJECT LOCATION



- **Background:** The project included replacement of bridge decks and handrailing at three pedestrian bridges over the Santa Ana River in Anaheim, Santa Ana, and Costa Mesa. Detours were required for each crossing during construction.
- **Work to date:** Construction initiated in Fall 2022, with one bridge repair at a time. Work was first completed on the Santa Ana bridge at 17<sup>th</sup> Street, then the Costa Mesa bridge near Adams Avenue, and finally the Anaheim bridge closest to Imperial Highway. The last bridge repairs were completed in late September 2023.
- **Current status:** All pedestrian bridges are open to the public.
- **Next Steps:** *The project is complete.*



Bridge 1 – Anaheim



Bridge 2 – Santa Ana



Bridge 3 – Costa Mesa



# Regional Trails — Aliso Creek Bikeway Repairs and Slope Stabilization

- **Background:** The project is located at the Aliso Creek Bikeway in Laguna Hills, between the I-5 overpass and Paseo de Valencia. The work involves replacing two collapsing 60-inch culverts and adding three segments of protective rip rap to restore and stabilize 2,000 linear feet of bike trail and vulnerable creek banks damaged by erosion. The trail will remain open with minor detours during work.
- **Work to date:** The final regulatory agency permit was approved in Fall 2021. OC Public Works anticipated initiating construction in mid-2023, when the I-5 widening construction in the area neared completion.
- **Current status:** The project was delayed so Caltrans could continue using portions of the area to route their equipment for the I-5 widening project.
- **Next steps:** *Caltrans' use of the area is projected to conclude in Spring 2024. The bikeway project is anticipated to start in Fall 2024 and be completed in early 2025.*



# Regional Trails — Peters Canyon Regional Trail Connection

- **Background:** The project is located adjacent to Jamboree Road in Irvine, between Walnut Avenue and Edinger Avenue, and involves connecting segments of existing regional trail beneath a Metrolink railway overcrossing.
- **Work to date:** An agreement with the OC Transportation Authority was approved by the County Board of Supervisors in May 2023. OC Parks has worked with the California Public Utilities Commission (CPUC) over the past year to procure a recreational traffic passage authorization under the railway crossing.
- **Current status:** The CPUC accepted OC Parks' application for passage, and it is currently under review, which is anticipated to take up to 8 months.
- **Next steps:** *Once CPUC review is complete, the trail will be fenced and striped per safety specifications and opened to the public. Project completion is anticipated in Fall 2024.*

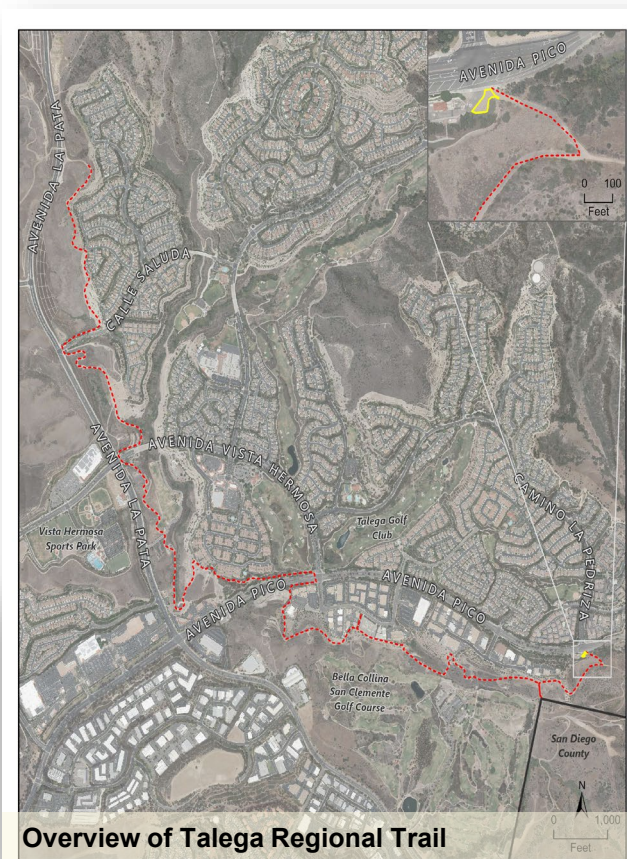


# Regional Trails — Peters Canyon Regional Trail Connection



# Regional Trails — Talega Regional Trail Addition

- **Background:** Talega Regional Trail is 9.6 miles of regional trail created as part of the Talega residential development in unincorporated Orange County, adjacent to the City of San Clemente.
- **Work to date:** The Orange County Board of Supervisors approved acceptance of the trail in May 2023. OC Parks Regional Trails staff conducted an inventory to determine ongoing maintenance needs.
- **Current status:** Routine trail maintenance is underway and related contracts are being established.
- **Next steps:**  
*The project is complete.*





# Regional Trails — OC Loop Coyote Creek Connection

- **Background:** When complete, the OC Loop Trail will provide 66 miles of seamless connection, linking the foothills to the beach and crossing Orange County and, in some locations, Los Angeles County lines. About 58 miles, or 88% of the OC Loop, is already in place. Connection of the Coyote Creek segments (Segments O, P, and Q) will bridge a critical 2.7-mile gap between the Coyote Creek Channel in Cerritos and La Mirada Boulevard in Buena Park.
- **Work to date:** Environmental and preliminary design initiated in 2021 and community input was received in 2022.
- **Current status:** The trail connection is in the final design phase and a Memorandum of Understanding for maintenance obligations is in process between OC Parks and LA Flood Control District.
- **Next steps:** *Completion of final design is anticipated by February 2024. Construction is anticipated to begin in 2024-27, dependent on funding.*



Overview of Coyote Creek segments of the OC Loop Trail

# Saddleback Wilderness & Gypsum Wilderness – Trail Network Additions

- **Background:** Both facilities were included in lands donated by The Irvine Company and include rich natural and cultural resources. Conservation overlays include the Natural Communities Conservation Plan / Habitat Conservation Plan (NCCP/HCP) and easements held by the OC Parks Foundation and The Nature Conservancy.
- **Work to date:** Beginning in 2021, surveys were conducted and infrastructure, including staging areas and trail systems, were developed and installed. Work was completed in 2023. Saddleback Wilderness opened to the public in March followed by Gypsum Wilderness in November. Visitor surveys were initiated upon each facility's opening.
- **Current status:** The open facilities provide an additional 9.2 miles of trail and are open for monthly open access days and multiple guided access events. The Trails Subcommittee selected names for Saddleback Wilderness Trails in August 2023, which were approved by the OC Parks Commission in December 2023.
- **Next steps:** *Once visitor surveys for Gypsum Wilderness are complete, a choice of recommended trails names will be presented to the Trails Subcommittee to select from and recommend to the OC Parks Commission for approval.*





# Saddleback Wilderness & Gypsum Wilderness — New Trail Networks



Overview of Saddleback Wilderness



Saddleback Wilderness Opening, March 2023



Gypsum Wilderness Opening, November 2023  
\*Photo courtesy of the Irvine Standard



Overview of Gypsum Wilderness

# Craig Regional Park – Bike Park Addition



- **Background:** The planned facility, on U.S. Army Corp of Engineers (ASACE) land within Craig Regional Park, is a 9.7-acre mountain bike skills course for all ages and abilities.
- **Work to date:** The project initiated in 2014 with site inventory and analysis and has since progressed with design concepts, a concept plan, public outreach, a regulatory submittal package, and a series of environmental and engineering approvals to meet USACE requirements. The project was awarded a \$1.2 million grant in 2022.
- **Current status:** The project has been under review by the USACE and received a conceptual approval letter in 2023 to revise and advance grading and drainage plans from 30% to 65%.
- **Next steps:** *Once engineering revisions are approved, the USACE will issue a Letter of No Objection to advance to the design-build phase of the project.*



# Peters Canyon Regional Park — East Ridge View Trail Reroute

- **Background:** The park General Development Plan identifies East Ridge View Trail for realignment due to steepness, heavy erosion, and access difficulty for patrol, maintenance, and emergencies. The work required temporary trail closures.
- **Work to date:** The reroute was implemented in Winter 2022-23 and restoration of the closed trail segments began immediately.
- **Current status:** The reroute trail segments are open to the public. Habitat restoration and maintenance activities are underway on the decommissioned trail segments.
- **Next steps:** *The reroute project is complete. Restoration of decommissioned trail segments, including monitoring, maintenance, and reporting to Wildlife Agencies, will continue to 2026.*



East Ridge View Trail prior to reroute, 2022



View of sustainable reroute (left) and closed segment (right)



East Ridge Trail Realignment  
Peters Canyon Regional Park

Overview of reroute locations in the park



# Peters Canyon Regional Park — East Ridge View Trail Reroute





# Irvine Regional Park — Adventure Trail Enhancement

- **Background:** The project used grant funding to transform a four-acre area near the Irvine Regional Park entrance by formalizing a quarter-mile looped walking trail and adding interpretive panels, nature-themed play components, and native plantings.
- **Work to date:** Plans were carried through from conceptual to final project design and construction began in 2022. The trail opened to the public in October 2023.
- **Current status:** The trail and amenities are open to visitors and receiving positive feedback.
- **Next Steps:** *The project is complete.*



Visitors explore the Adventure Trail  
\*Photo courtesy of Irvine Standard



2023 Trail Project Overview

OC Parks Trails Subcommittee — January 11, 2024





# Irvine Regional Park — Adventure Trail Enhancement



Progress on the play and explore elements along the trail

## Senses for Survival



Interpretive panel created for the Adventure Trail

### Use all your senses to experience nature

Animals use their senses to find food, escape from predators, and locate other animals. Like animals, humans use our senses to fully experience the environment around us.

**Hearing.** Animals use their hearing to find each other and avoid enemies. What do you hear along the trail?

**Seeing.** Animals use their vision to spot prey, find berries and other food, and avoid predators. What do you see along the trail?

**Smelling.** Many animals have a powerful sense of smell that helps them find food or warns them when danger is near. Do you smell anything along the trail?

**Touching.** Animals use their sense of touch to find or build homes, feel for food, and take care of their young. How have you used your sense of touch today?

**Tasting.** Taste can help animals avoid toxic plants or encourage eating high-energy food sources. What have you tasted today?

### What's that sound?

Find the sound tubes placed along the trail. Can you hear like a coyote? Can you hear a friend sing like a bird? Can you hiss like a snake?



Visitors enjoying the trail amenities  
\*Photo courtesy of Irvine Standard



Panel highlighting native white sage



# Questions

