



**OC Parks East Ridge View Trail Reroute, Peters Canyon Regional Park**  
OC Parks Trails Subcommittee — March 27, 2023





# Presentation Agenda

- Background
- Goals of Reroute
- Project Overview
  - Planning
  - Implementation
- Conclusion

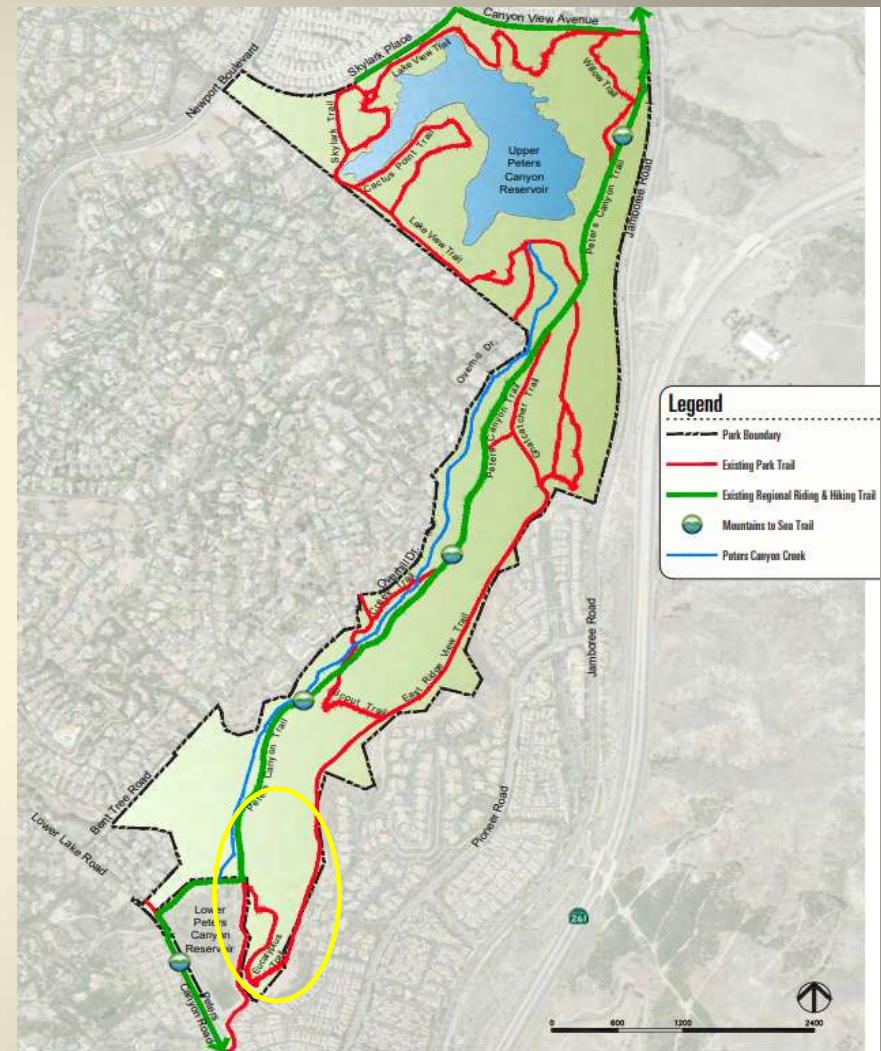
# Peters Canyon Regional Park History

- Part of original Spanish land grant, Rancho Lomas De Santiago
- 1886 – Land purchased by James Harvey Irvine I
- 1931 – Upper Peters Canyon Reservoir completed
- 1940 – Lower Reservoir constructed
- 1992 – Irvine Company donated 340 acres to County



# Background

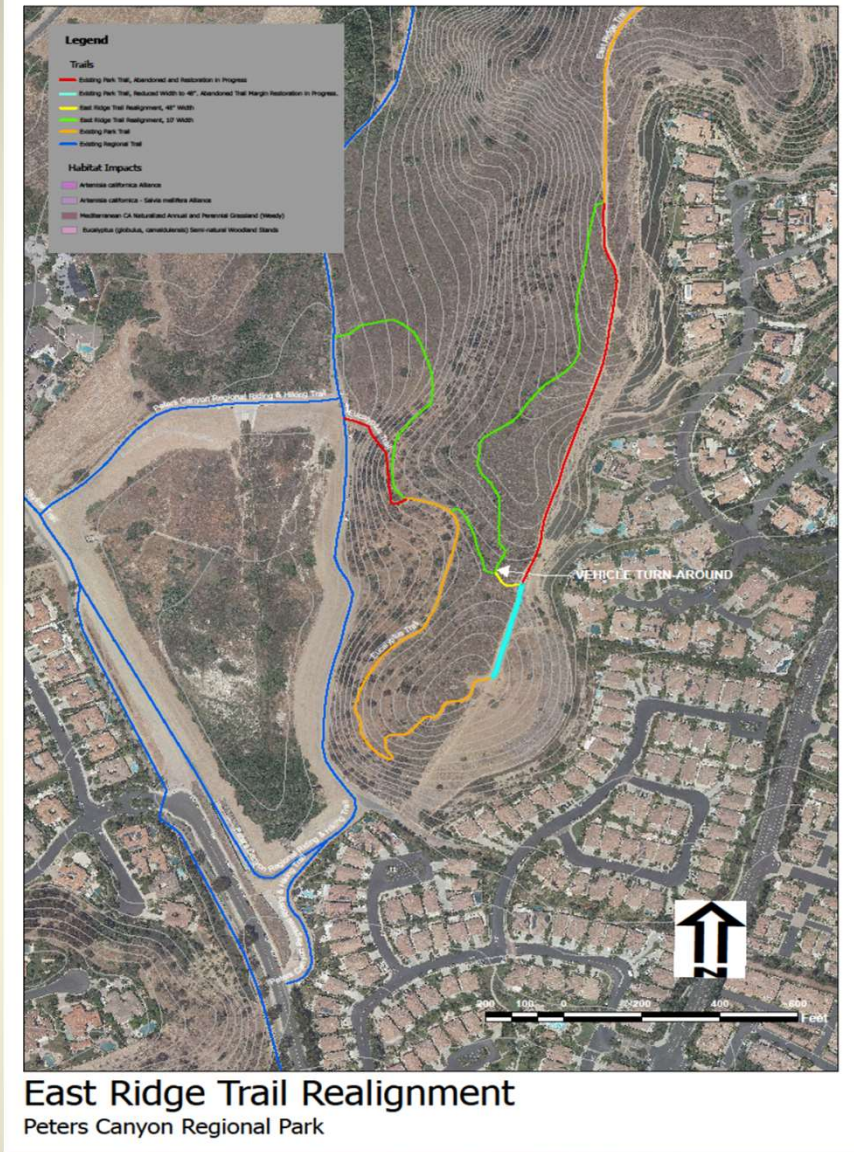
- Park includes 340 acres with 9 miles of trails
- Land must be managed in accordance with the Natural Community Conservation Plan/Habitat Conservation Plan (NCCP/HCP), a state and federal agreement that protects habitat values
- Park's 2019 General Development Plan identifies East Ridge View Trail for realignment due to steepness, heavy erosion, and access difficulty for patrol, maintenance, and emergency vehicles





# Goals of Reroute

- Increase public enjoyment of Park
- Enhance sustainability
- Reduce trail maintenance
- Improve trail connectivity
- Improve Park patrol, maintenance, and emergency response capabilities

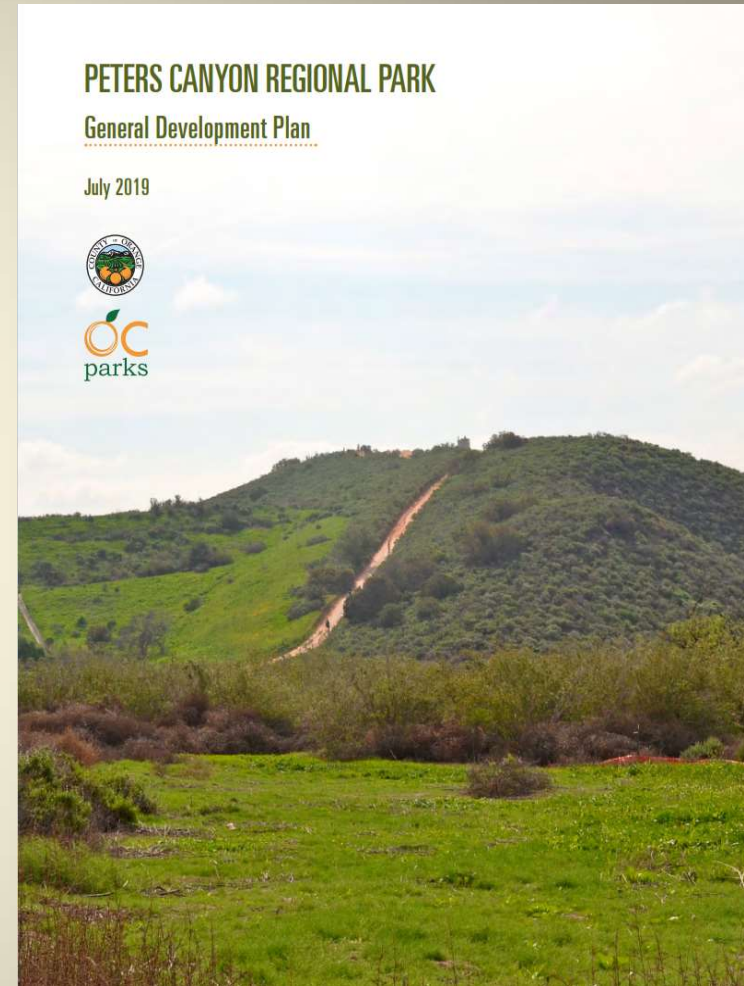


OC Parks East Ridge View Trail Reroute, Peters Canyon Regional Park  
OC Parks Trails Subcommittee — March 27, 2023



# Reroute Planning

- In 2022, a working group was formed with OC Parks' facility staff, Natural Resources, Trails Coordinator, and contractor
- Considerations included:
  - Recreation – Temporary trail closures, signage and fencing needs, and improved grade and flow
  - Operations – Equipment and materials access, timing for season and weather, and special events
  - Sustainability – Grade and camber, drainage features, and vehicle accommodation
  - Sensitive resources – Native plant and animal species, habitat features, and archaeological/paleontological
- Wildlife Agencies required demonstration of impact avoidance/minimization measures and a habitat restoration plan





# Reroute Planning

- Recreation impact avoidance/minimization efforts entailed:
  - Minimizing trail closures, installing signage, and strategic fencing to guide visitors to new route
- Habitat impact avoidance/minimization efforts involved:
  - Flagging and salvaging native plants for decommissioned trail segments
  - Positioning the trail to go through non-native rather than native habitats
  - Performing work outside of nesting season
  - Restoring habitat on decommissioned trail segments



# Reroute Implementation

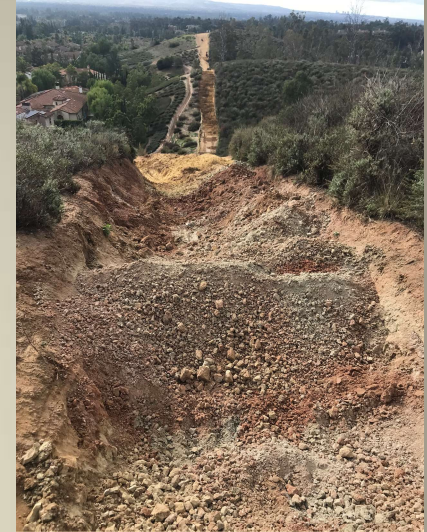
- Work began in Winter 2022 to avoid nesting season, started on November 28 and completed on December 16, 2022
- Work included:
  - Salvaging native plants from the path of the new alignment
  - Installing the new alignment of East Ridge View Trail
  - Connecting the new alignment with Eucalyptus Trail
  - Decommissioning and closing the old alignment
  - Fencing and signing the new and closed segments





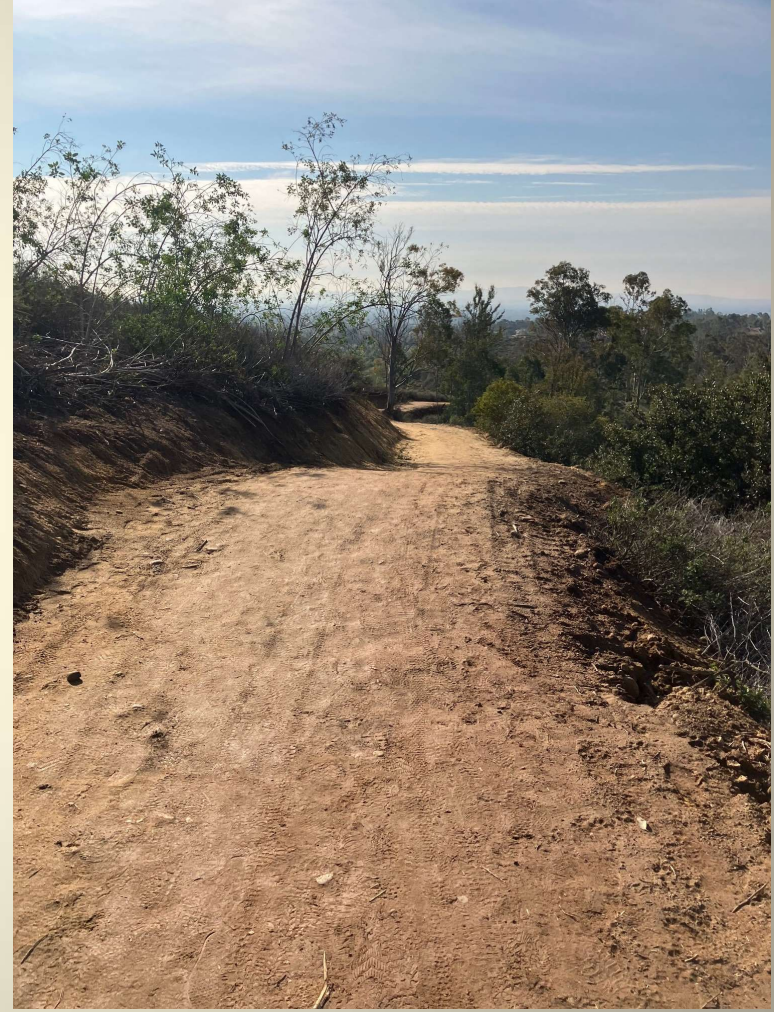
# Habitat Restoration Implementation

- Goal: Establish self-sustaining, high-quality habitat in the footprint of decommissioned trail segments
- 2022 Site Preparation:
  - Decompact decommissioned trail segments
  - Salvage soil and native plants from new alignment
  - Locally collect native seed
- Installation:
  - 2022 – Spread cut vegetation material from new trail over decommissioned trail segments
  - 2022 – Plant salvaged material
  - February 2023 – Hydroseed with native plant seed
  - 3 Years – Maintenance, monitoring, and reporting to Wildlife Agencies





# Project Results



OC Parks East Ridge View Trail Reroute, Peters Canyon Regional Park  
OC Parks Trails Subcommittee — March 27, 2023





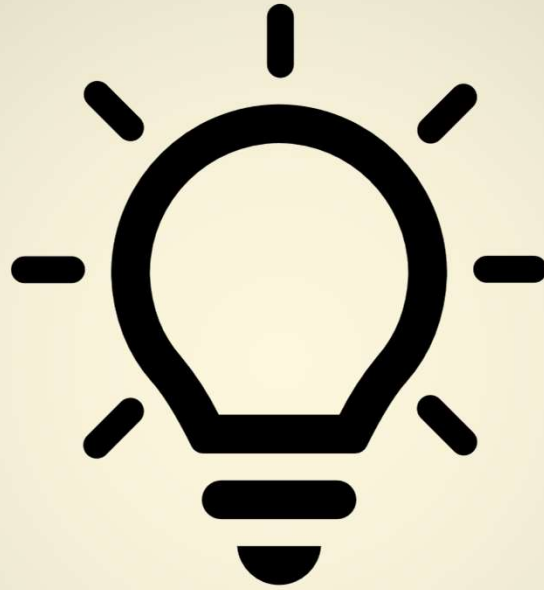
# Project Results



OC Parks East Ridge View Trail Reroute, Peters Canyon Regional Park  
OC Parks Trails Subcommittee — March 27, 2023



# Questions



OC Parks East Ridge View Trail Reroute, Peters Canyon Regional Park  
OC Parks Trails Subcommittee — March 27, 2023

