



Mile Square Regional Park

SPRING/SUMMER: 7:00 A.M. – 9:00 P.M.
FALL/WINTER: 7:00 A.M. – 6:00 P.M.

OFFICE HOURS: MON. – FRI. 8:00 A.M. – 3:30 P.M.

1 SQUARE MILE OF NEARLY EVERY PARK ACTIVITY,
INCLUDING ARCHERY, FISHING AND GOLF •
WALK OR RUN THE FOUR-MILE PERIMETER

REGIONAL PARK

Mile Square Golf Course Conversion - Phase 1

Enter park from Edinger Avenue (Ward Entrance)

Park in the Overflow Parking area (gravel lot)

Meet at Construction Trailers

Commissioners attending the concert may park at VIP Lot

Vicinity Map

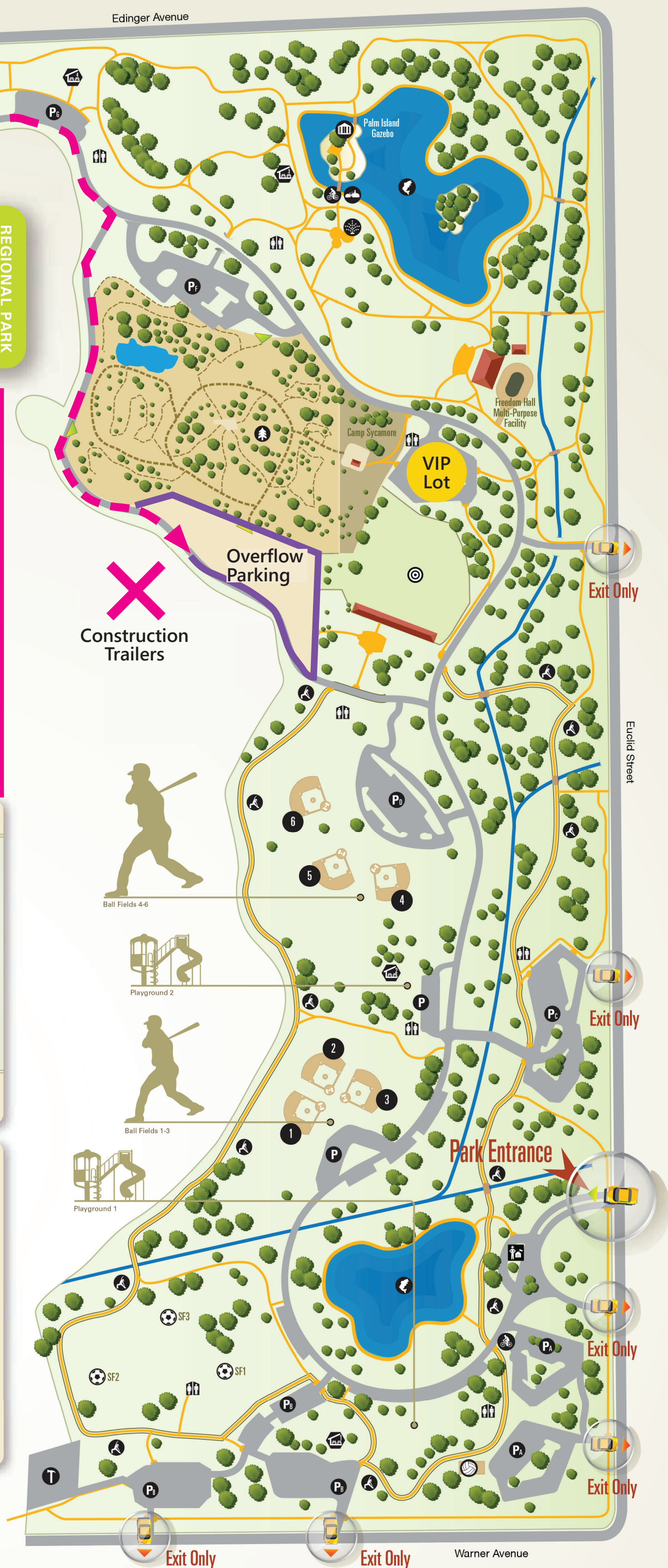
MILE SQUARE REGIONAL PARK



16801 Euclid Street, Fountain Valley, CA 92708
714-973-6600 • milesquare@ocparks.com
www.ocparks.com/milesquare



To reserve a picnic shelter or a sports field, please call or visit the park office.





Pre-construction aerial photo showing Expansion Area

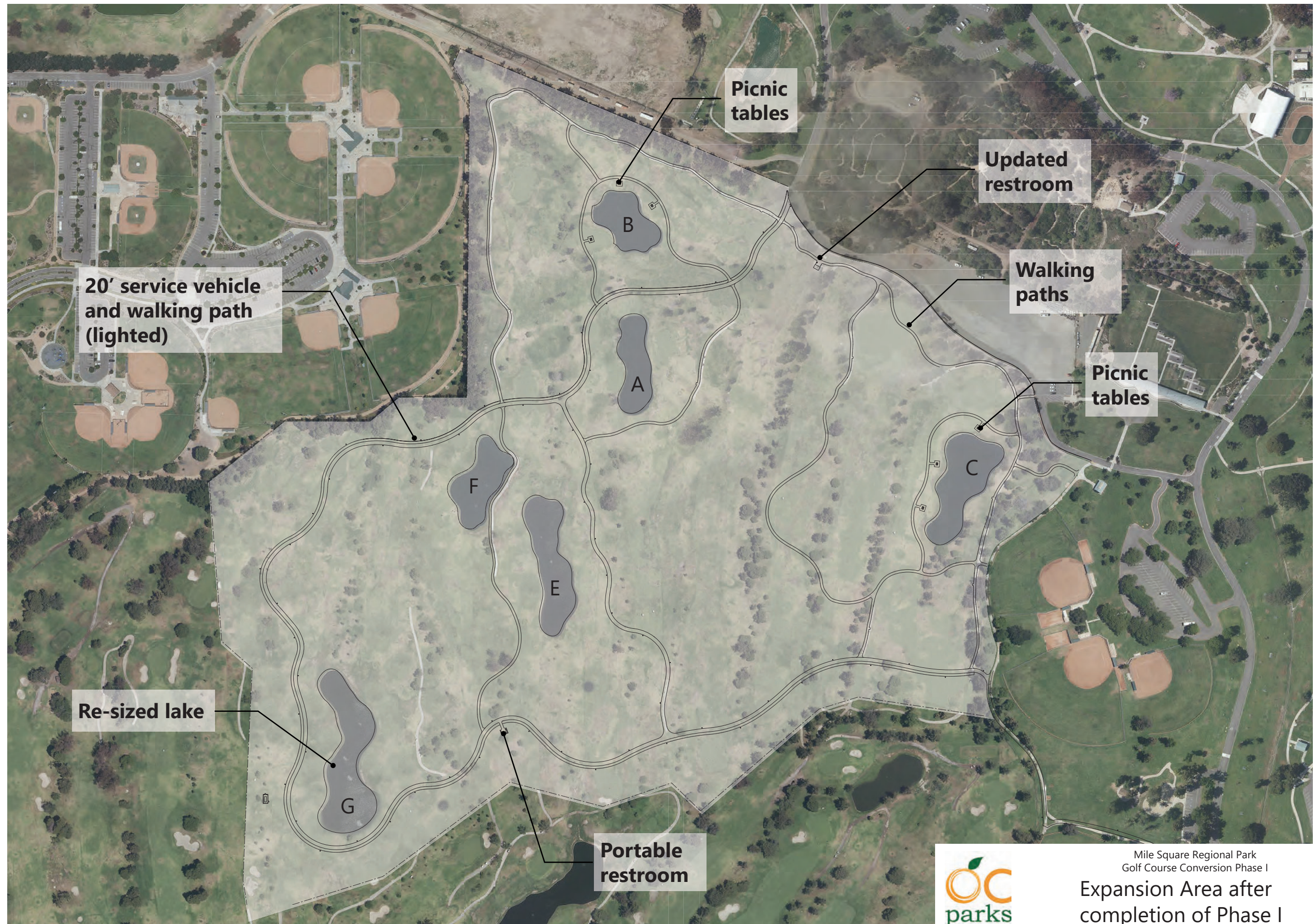
Mile Square Regional Park Master Plan and Phase I Golf Course Conversion

Timeline:

- **July 13, 2021** – Master Plan and EIR approved by the Board of Supervisors (Board)
- **July 31, 2021** – 93 acres of land turned over to OC Parks from Mile Square Golf Course
- **December 7, 2021** – Contract for Phase I construction work awarded by the Board
- **February 7, 2022** – Construction started on Phase I



Aerial photo of construction progress in Expansion Area, June 2022



Mile Square Regional Park
Golf Course Conversion Phase I

Expansion Area after
completion of Phase I
Conversion