



PILOT PROJECT UPDATE - TRAIL USE DESIGNATIONS

OC Parks Trails Subcommittee Meeting — December 1, 2021



INTRODUCTION

- The pilot project was developed in response to trail use concerns including user conflict, safety, trail overuse and habitat impacts.
- OC Parks in partnership with the Utah State University (USU) developed a program to study trail use designation changes made to select trails at Santiago Oaks Regional Park, Laguna Coast Wilderness Park and Aliso & Wood Canyons Wilderness Park.
- On December 10, 2020, the OC Parks Trails Subcommittee recommended that the Parks Commission support the pilot project.

PROJECT UPDATES

May 2021:

- Public notification of the pilot project through OC Parks website, social media and park signage.
- USU conducted pre-implementation surveys and launched trail counters.

June 2021:

- Pilot project implemented.
- Collection of trail counter data every 2 weeks.
- Park Ranger staff monitoring trail use.

July-August 2021:

- USU conducted post-implementation user surveys.

September 2021 – Present

- USU analyzing data to produce a final report.

TRAIL USE CHANGES — SANTIAGO OAKS

Original Trail Use

Trail Use Change

Pony Trail

- Hiking, biking and equestrian
- Bidirectional



- Hiking and equestrian only
- Bidirectional

Yucca Ridge Trail

- Hiking, biking and equestrian
- Bidirectional



- Hiking, biking and equestrian
- Downhill only

Chutes Ridgeline Trail

- Hiking, biking and equestrian
- Bidirectional



- Biking only
- Downhill only

Peralta Hills Trail

- Hiking, biking and equestrian
- Bidirectional



- Hiking and equestrian only
- Bidirectional

Cactus Canyon Trail

- Hiking, biking and equestrian
- Bidirectional



- Hiking, biking and equestrian
- Downhill only

TRAIL USE CHANGES — ALISO AND WOOD

Original Trail Use

Trail Use Change

Lynx Trail

- Hiking, biking and equestrian
- Bidirectional



- Biking only
- Downhill only

Cholla Trail

- Hiking, biking and equestrian
- Bidirectional



- Biking: uphill only
- Hiking and equestrian: bidirectional

TRAIL USE CHANGES — LAGUNA COAST

Original Trail Use

Trail Use Change

Laguna Ridge Trail

- Hiking, biking and equestrian
- Bidirectional



- Biking only
- Downhill only

Old Emerald Trail

- Hiking and biking
- Bidirectional



- Biking: uphill only
- Hiking: bidirectional

UTAH STATE UNIVERSITY PRESENTATION - PROJECT UPDATE -



PILOT PROJECT UPDATE - TRAIL USE DESIGNATIONS

OC Parks Trails Subcommittee Meeting — December 1, 2021



NEXT STEPS

- USU will conduct a more in-depth analysis of data collected and will provide a comprehensive report to the OC Parks Trails Subcommittee in Spring 2022.
- OC Parks Trails Subcommittee will review the USU report and evaluate the pilot project.

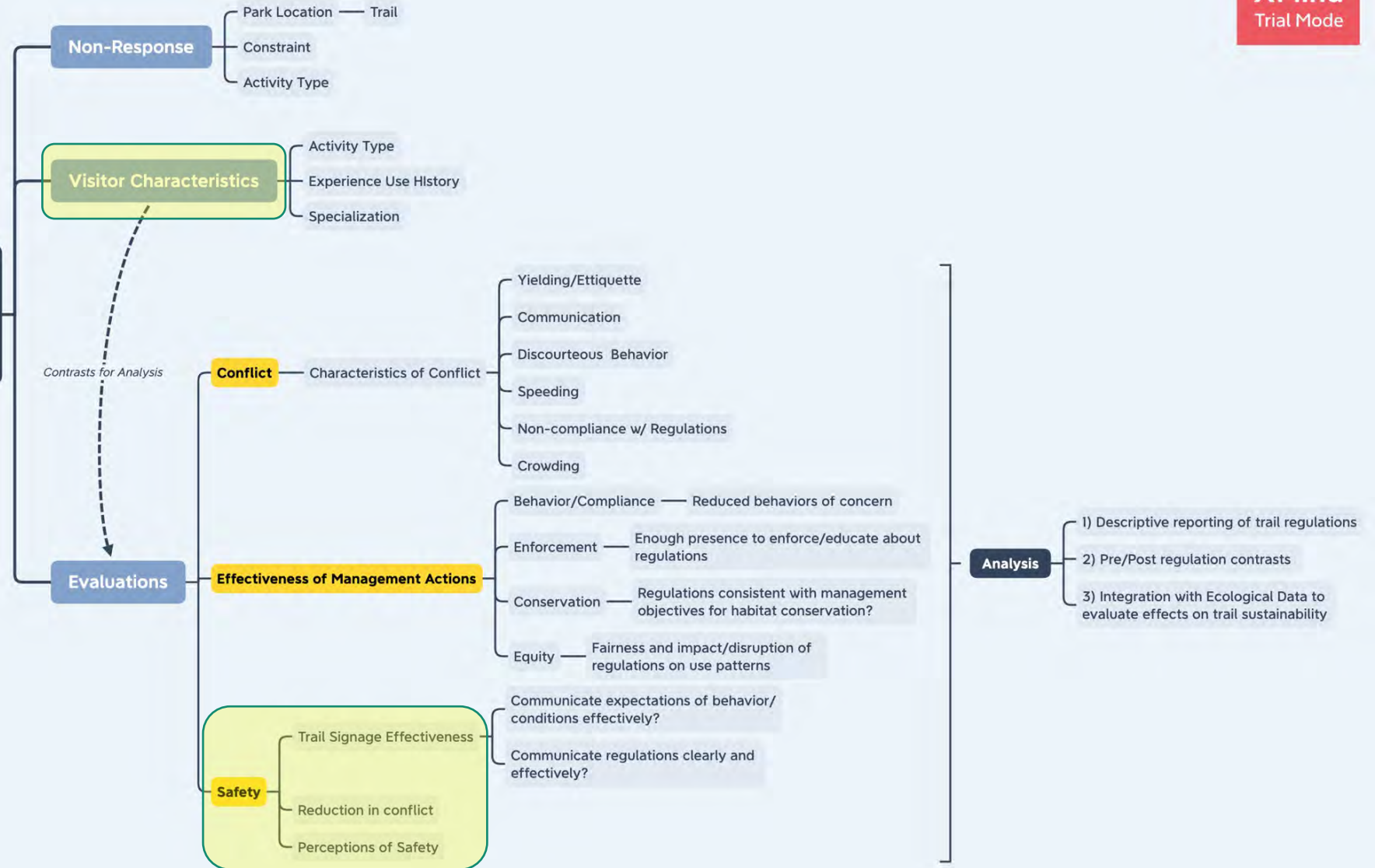
OC Parks Trails Pilot Program *2021 Survey Highlights*

Dr. Christopher A. Monz
Noah Creany



2021 Trail Survey Conceptual Model

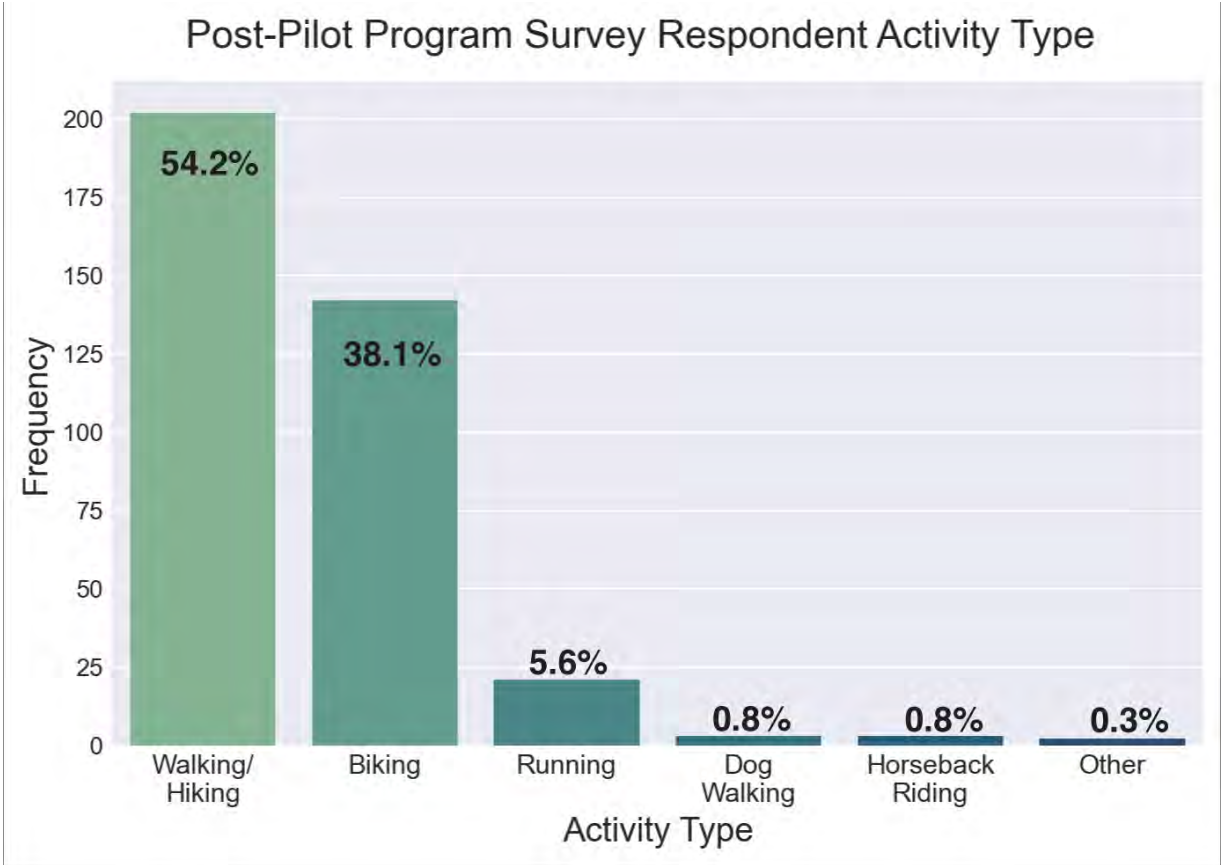
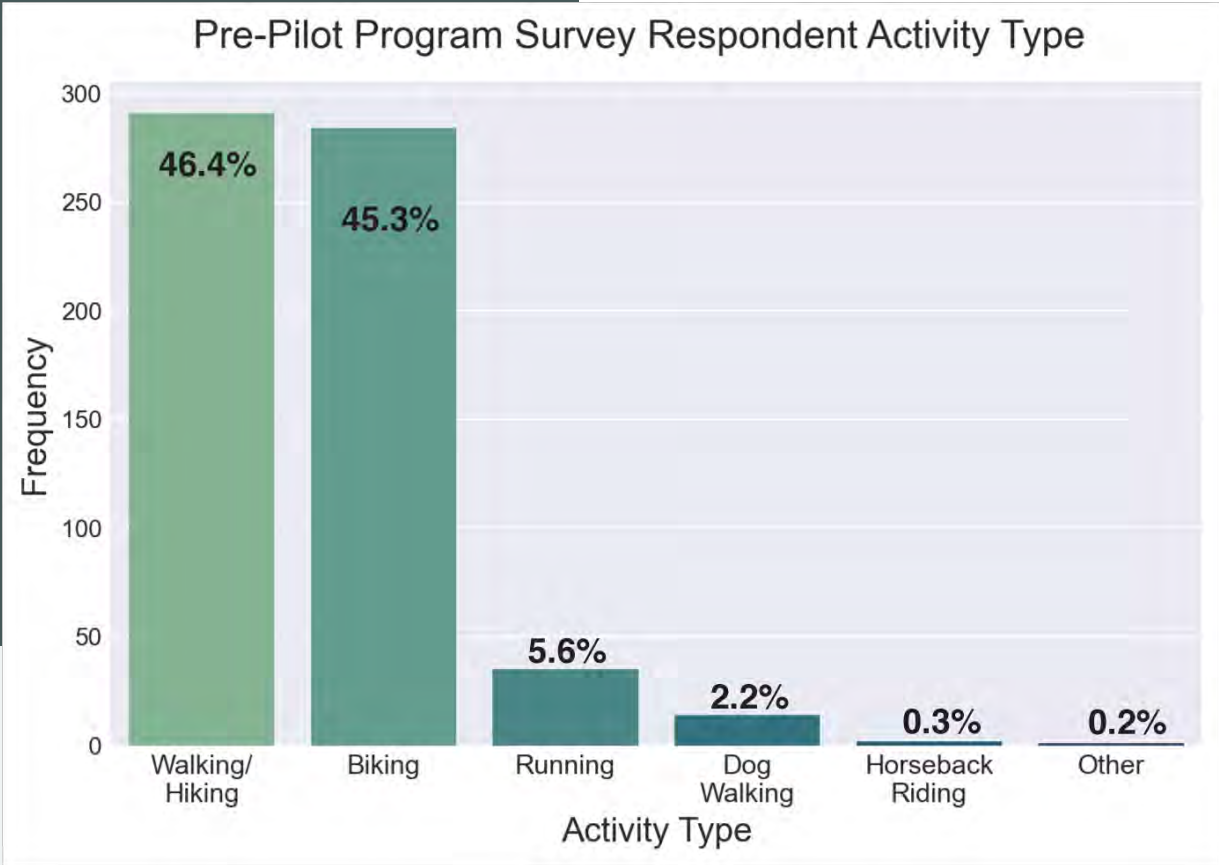
OC Parks 2021 Evaluative Trail Survey



Survey Respondent Descriptive Statistics:

Variable	Level	Pre	Post	Statistic
Experience Use History	0-10 days	35	20	$\chi^2(3)=1.641$ $p=.650$
	11-25 days	38	20	
	26-50 days	127	68	
	51 or more days	405	262	
Specialization	Beginner	19	14	$\chi^2(4)=10.213$ $p=.037^*$
	Novice	39	20	
	Intermediate	261	150	
	Advanced	198	154	
	Expert	83	33	
Age	Mean	47.4	45.5	$t(913)=2.021$, $p=.043^*$
Gender	Male	433	259	$\chi^2(4)=5.928$ $p=.205$
	Female	161	95	
	Non-conforming	3	2	
	Prefer not to answer	7	7	
	Identity not listed	0	3	

Activity Type



Survey Q on Trail Mgmt.:

- Assess visitor perceptions of safety and conflict
 - Activity Type restrictions
 - Trail Direction
- Experience Quality

Q. Please indicate your level of agreement or disagreement with the following statements about trail management.

(5 pt. Strongly Disagree - Strongly Agree + Don't Know/Unsure)

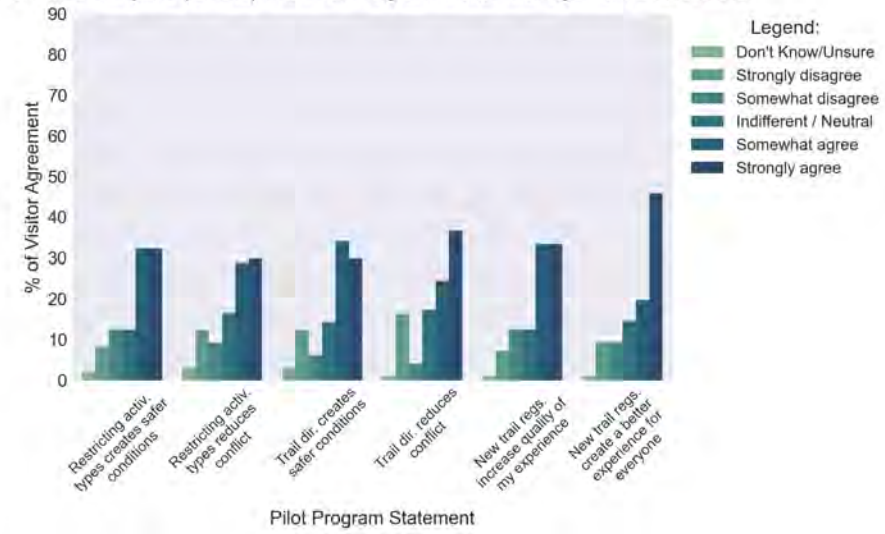
- Restricting Activity types on some trails creates safer conditions for everyone
- Restricting activity types on some trails reduces conflict
- Designating the direction of trail use creates safer conditions for everyone
- Designating the direction of trail use reduces conflict
- Overall, the new trail regulations (i.e. activity type/direction of trail use) increase the quality of my experience
- Overall, the new trail regulations create a better experience for all visitors.

Pilot Program Trail Mgmt.: Aliso Wood Cholla Trail

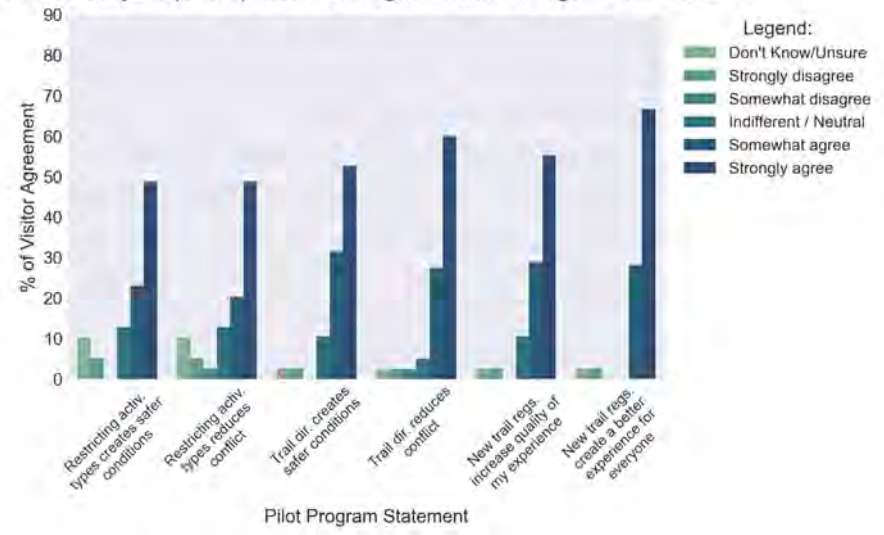
Pre

Post

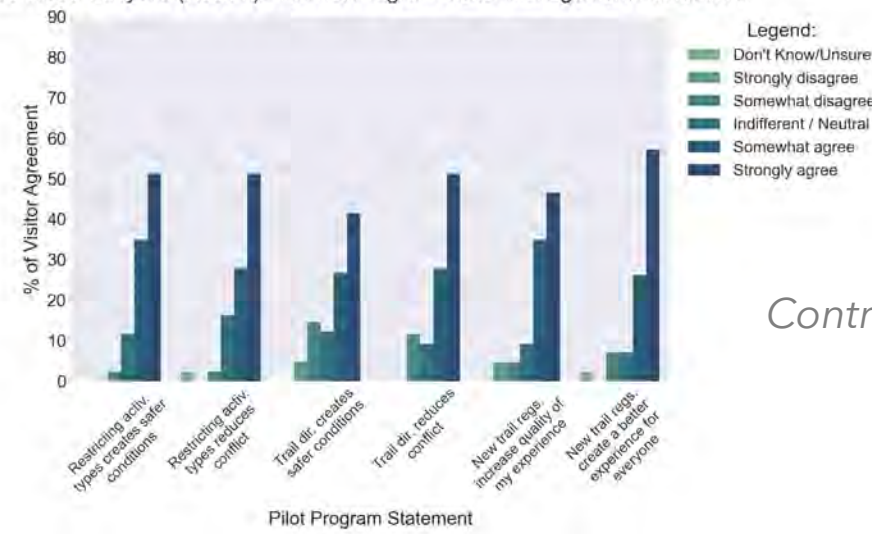
Aliso Wood Canyons (Cholla) Pre-Pilot Program Visitor Management Evaluations



Aliso Wood Canyons (Cholla) Post-Pilot Program Visitor Management Evaluations

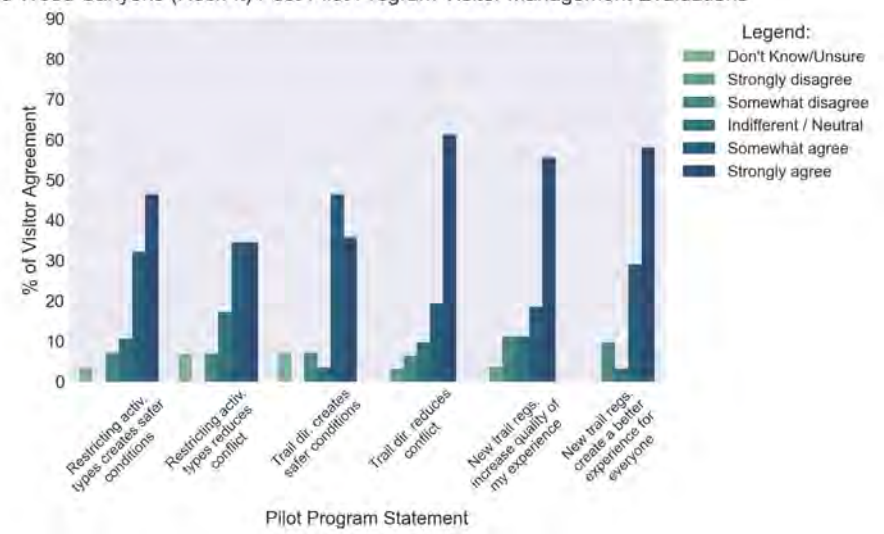


Aliso Wood Canyons (Rock-It) Pre-Pilot Program Visitor Management Evaluations



Control

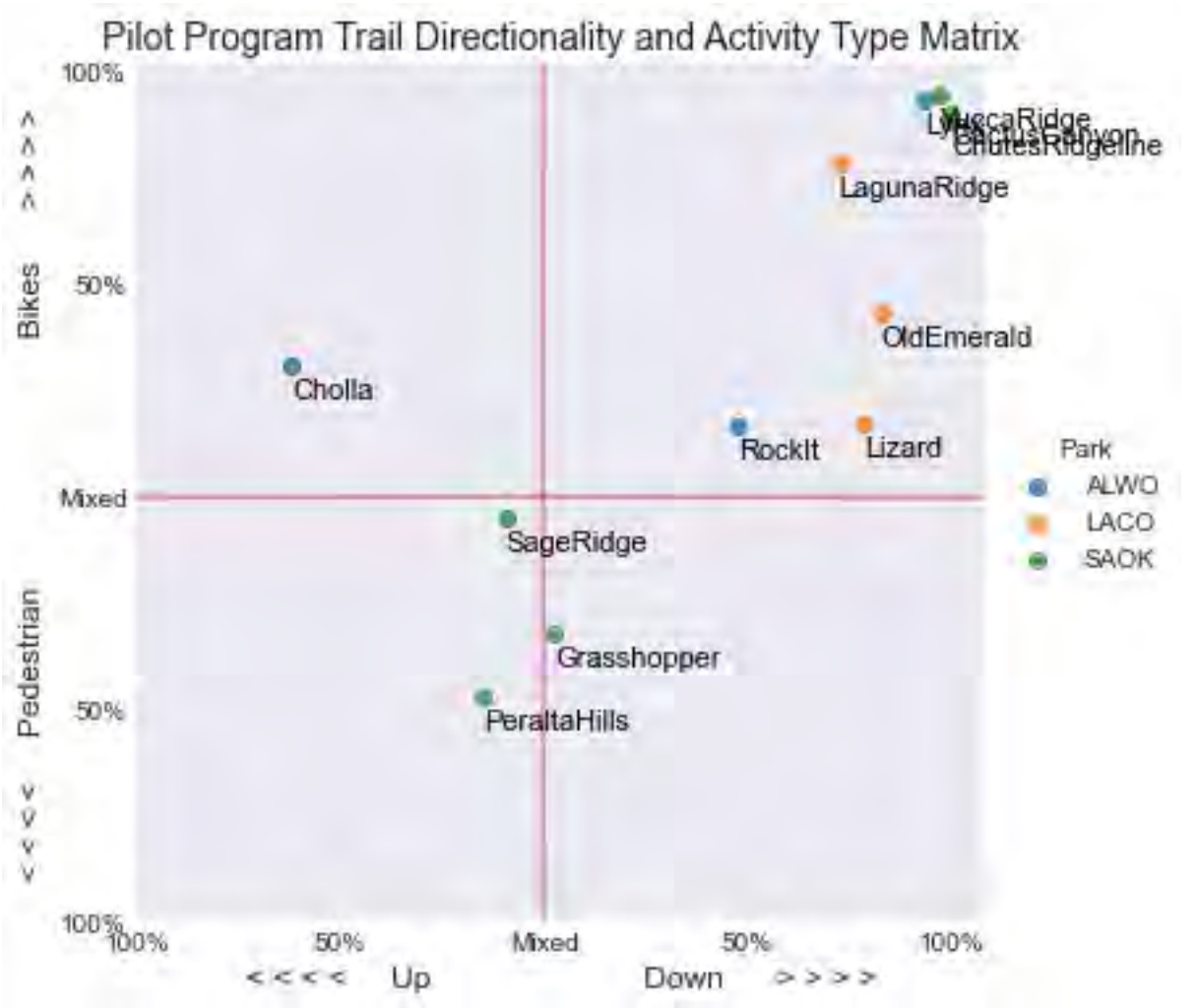
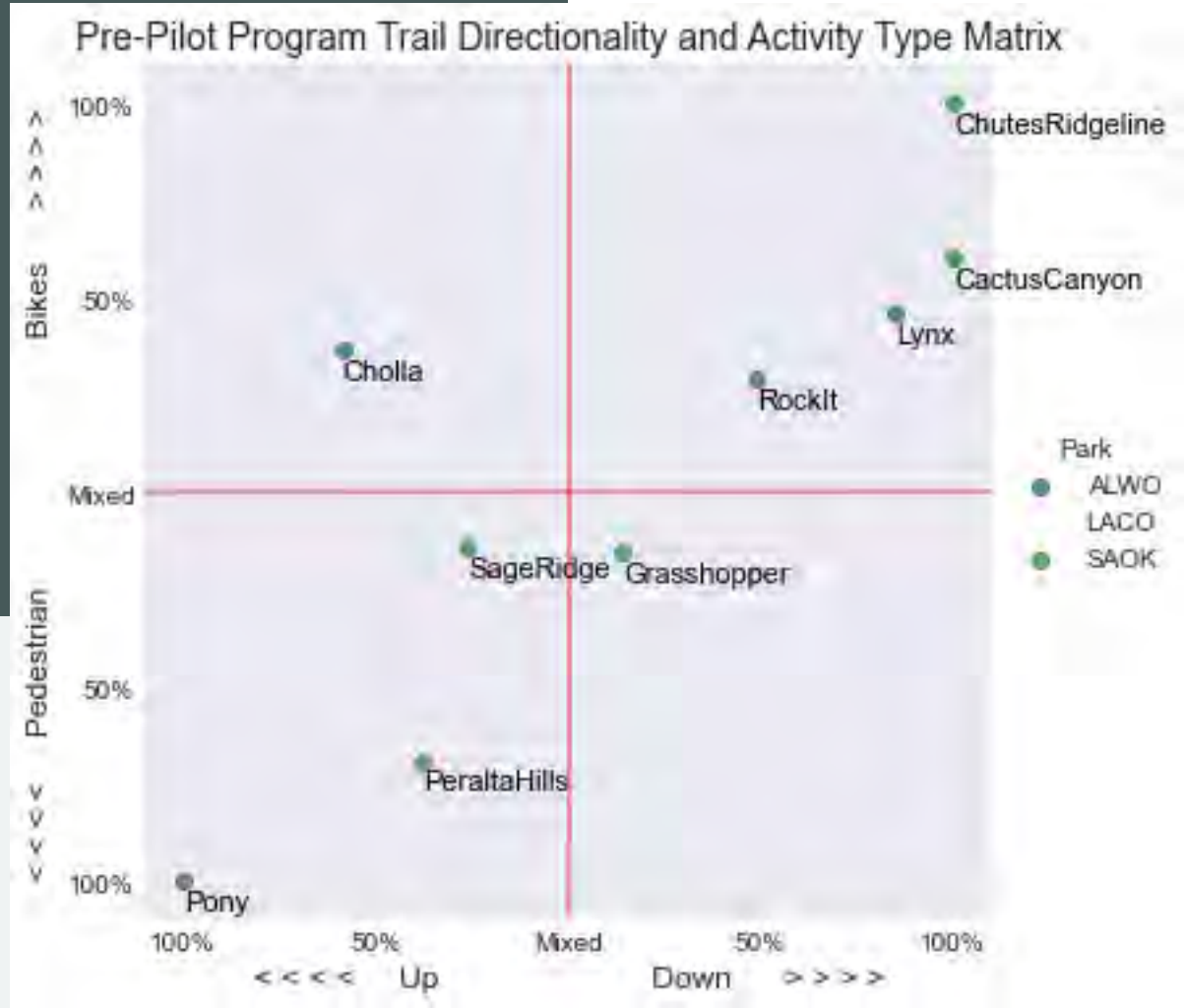
Aliso Wood Canyons (Rock-It) Post-Pilot Program Visitor Management Evaluations



- Overall, increased support for Pilot Program Trail Management

TRAFx

Trail Direction:



Presentation Summary:

Survey Results

- Initial trends indicate:
 - Support for Pilot Program Regulations
 - Reduced conflict, Increased quality of visitor experience

TRAFx

- Trails are part of a network, not independent of each other
- Visitor movement (direction, speed) has implications for management

Next Steps

- Statistical analysis of Pilot Program effects
- Strava Metro informing behavioral changes as a result of Pilot Program