



Legend

- Park Office
- Restroom
- Parking
- Party Pavilion
- Playground
- Bandshell
- Group Areas
- Nature Center/ Interpretive Programs
- Irvine Park Railroad
- Pony Rides
- Paddle Boat Rental
- Bike Rental
- Historic Arch
- Food Concession
- Fishing
- Emergency Access Gate
- Scenic Overlook
- Maintenance Yard

REGIONAL PARK Irvine Regional Park

SPRING/SUMMER: 6:00 A.M. – 9:00 P.M.
 FALL/WINTER: 6:00 A.M. – 6:00 P.M.
 OFFICE HOURS: MON. – FRI. 8:00 A.M. – 4:00 P.M.

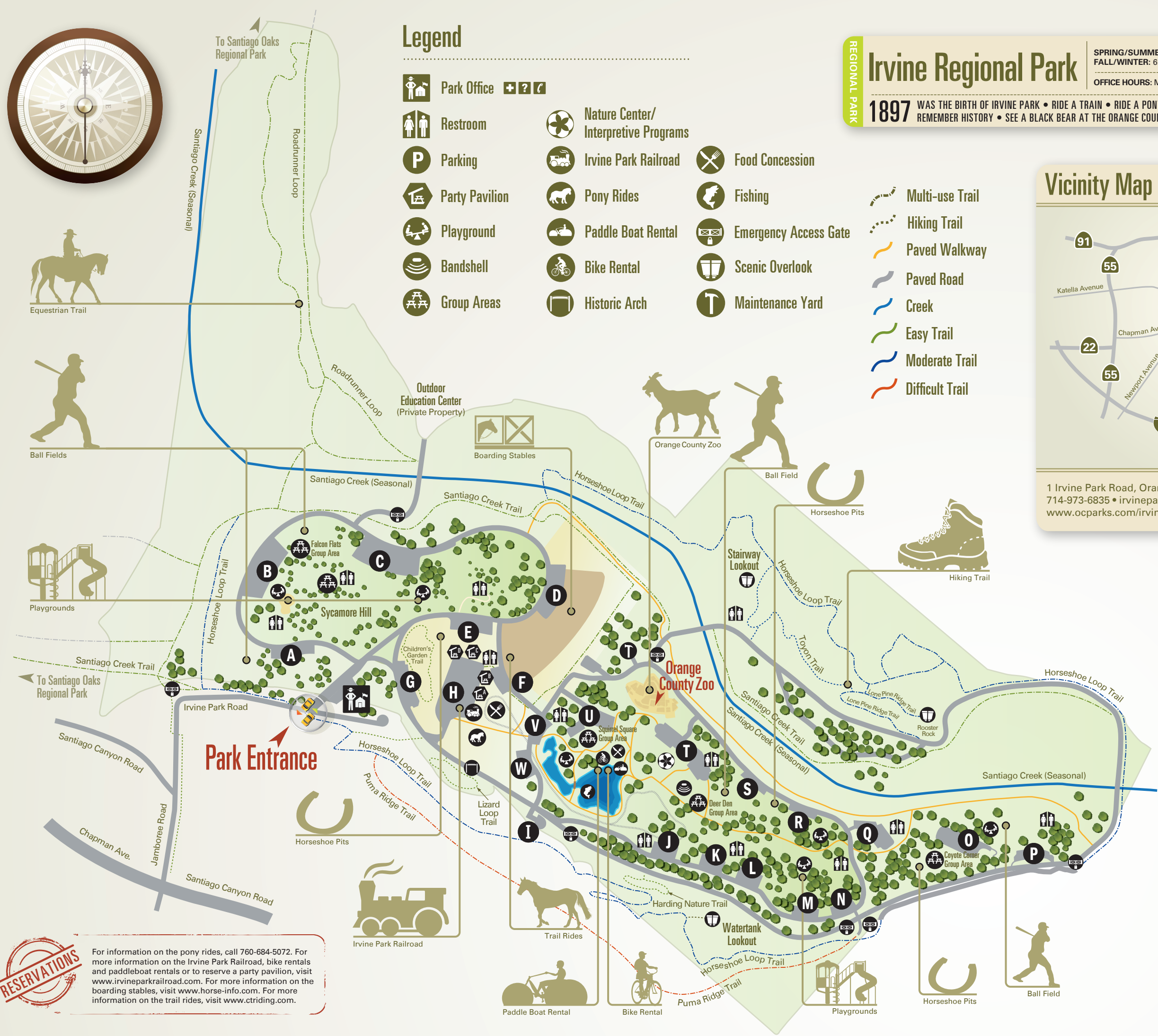


1897 WAS THE BIRTH OF IRVINE PARK • RIDE A TRAIN • RIDE A PONY •
 REMEMBER HISTORY • SEE A BLACK BEAR AT THE ORANGE COUNTY ZOO

Vicinity Map IRVINE REGIONAL PARK



1 Irvine Park Road, Orange, CA 92869
 714-973-6835 • irvinepark@ocparks.com
 www.ocparks.com/irvinepark



- hiking only
Children's Garden Trail: EASY 0.25 miles
- hiking only
Harding Nature Trail: EASY 0.2 miles
- multi-use
Horseshoe Loop Trail: MODERATE 3.2 miles
- hiking only
Lizard Loop Trail: EASY 0.1 miles
- multi-use
Lone Pine Ridge Trail: MODERATE 0.2 miles
- multi-use
Puma Ridge Trail: DIFFICULT 0.8 miles
- multi-use
Road Runner Loop Trail: EASY 1.3 miles
- hiking only
Toyon Trail: MODERATE 0.2 miles
- multi-use
Santiago Creek Trail: EASY 1.5 miles

RESERVATIONS
 For information on the pony rides, call 760-684-5072. For more information on the Irvine Park Railroad, bike rentals and paddleboat rentals or to reserve a party pavilion, visit www.irvineparkrailroad.com. For more information on the boarding stables, visit www.horse-info.com. For more information on the trail rides, visit www.ctriding.com.