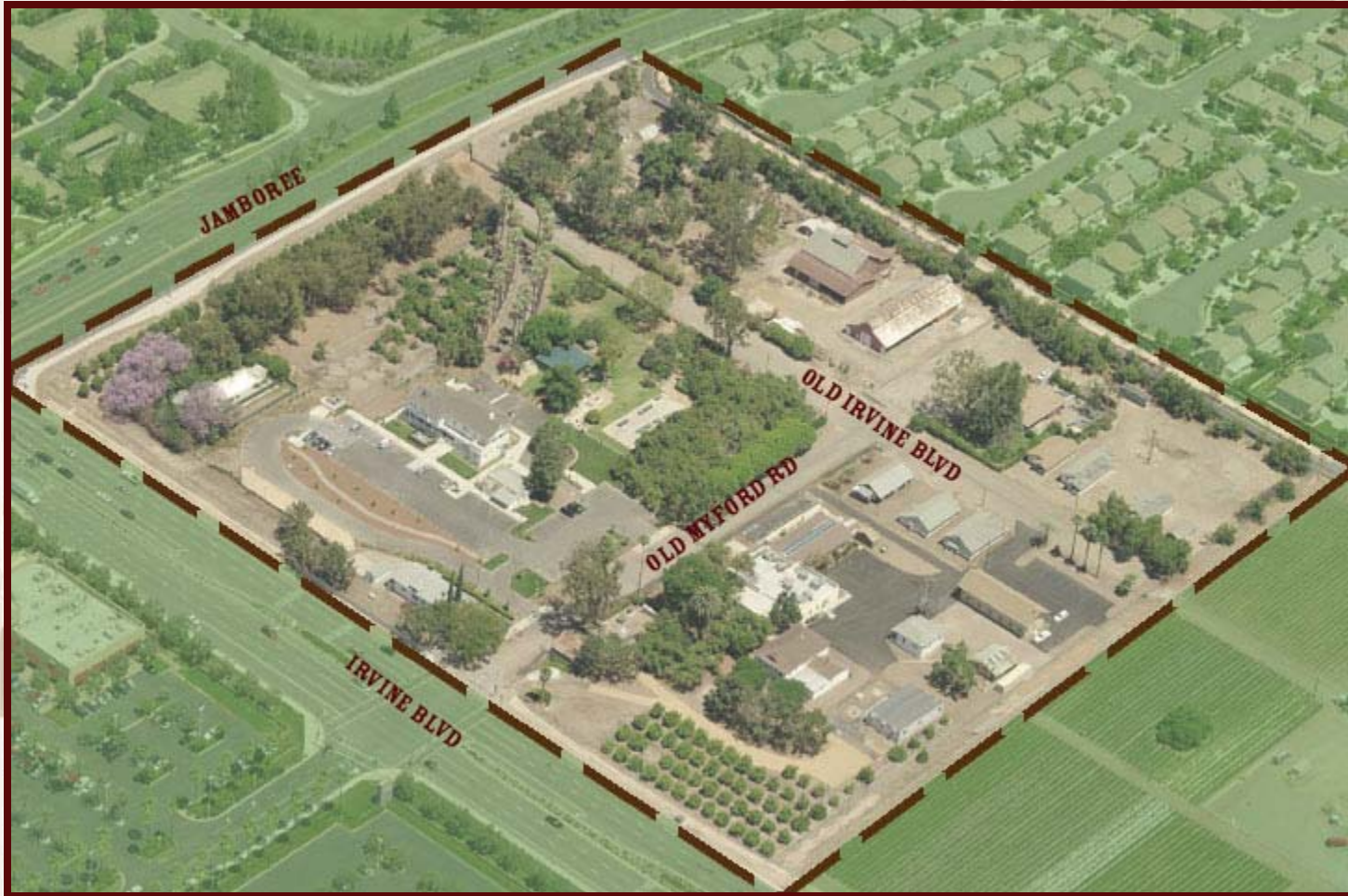


IRVINE RANCH HISTORIC PARK ENTRANCE IMPROVEMENTS

(SIDEWALK, DRAINAGE, SIGNAL, and LANDSCAPE WORK)



LOCATION MAP



**IRVINE RANCH HISTORIC PARK
ENTRANCE IMPROVEMENTS**



PROJECT PURPOSE :

- Provide safe pedestrian access to the park
- Meet ADA standards for access
- Increase the general safety for park visitors
- Improve traffic flow at the intersection
- Enhance park entry and views along Irvine Blvd.

PROJECT SCHEDULE :

- December 2009 – Spring 2010

**IRVINE RANCH HISTORIC PARK
ENTRANCE IMPROVEMENTS**



PARK DESTINATIONS

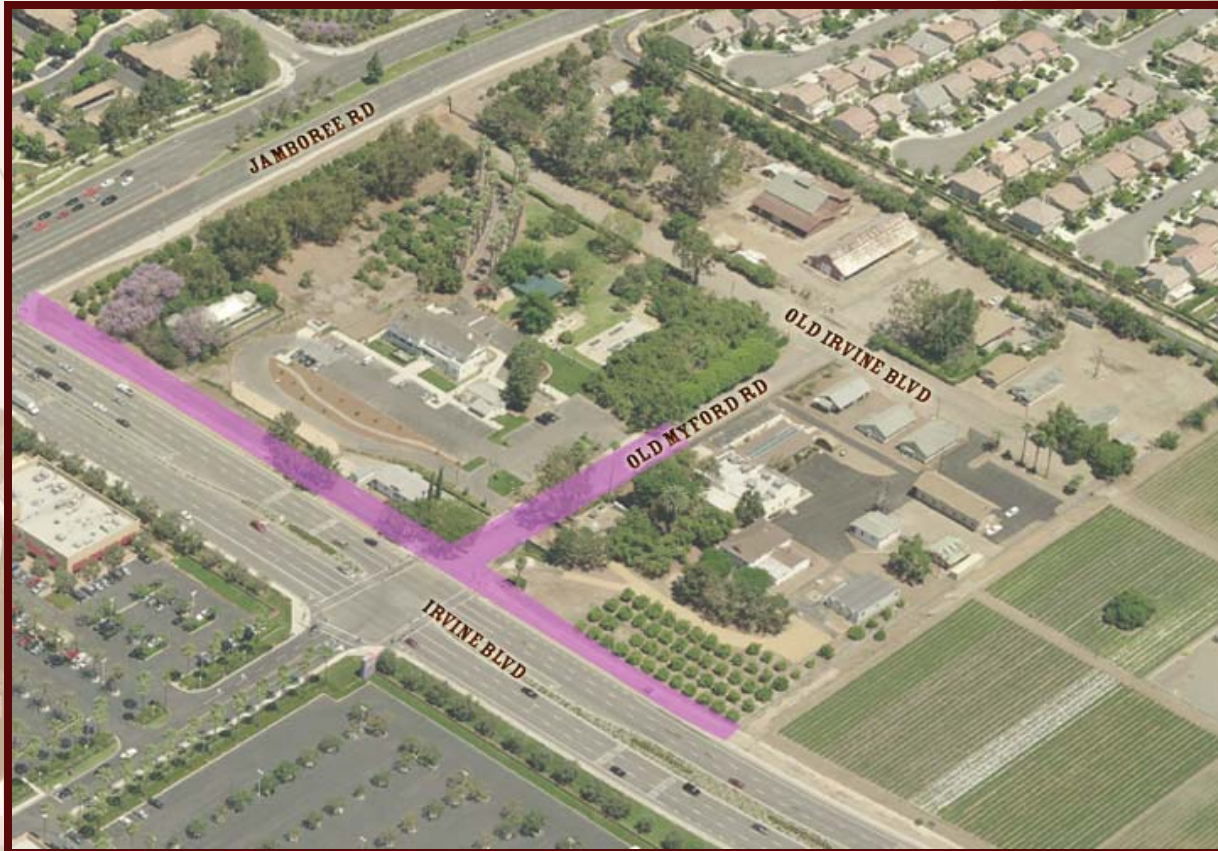


-  **KATIE WHEELER
BRANCH LIBRARY**
-  **OC PARKS
HEADQUARTERS**
-  **TROOP 36
BOY SCOUTS**
-  **OCFB
FARMERS' MARKET**

**IRVINE RANCH HISTORIC PARK
ENTRANCE IMPROVEMENTS**



PROJECT LIMITS



 PROJECT LIMITS

**IRVINE RANCH HISTORIC PARK
ENTRANCE IMPROVEMENTS**



IMPROVEMENTS INCLUDE:

➤ Pedestrian Access

- Concrete sidewalk, ramps, and gate
- New upgraded traffic signals (2)

➤ Enhance Park Frontage and Entry

- Replace open concrete drainage system with underground system
- Retain views of citrus groves/Orange County's historic agricultural past
- Incorporate plants for historic relevance and water conservation

**IRVINE RANCH HISTORIC PARK
ENTRANCE IMPROVEMENTS**



COOPERATIVE AGREEMENT

The Agreement identifies respective responsibilities for:

- Funding
- Design and Construction
- Operation and Maintenance



**IRVINE RANCH HISTORIC PARK
ENTRANCE IMPROVEMENTS**

