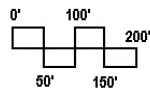
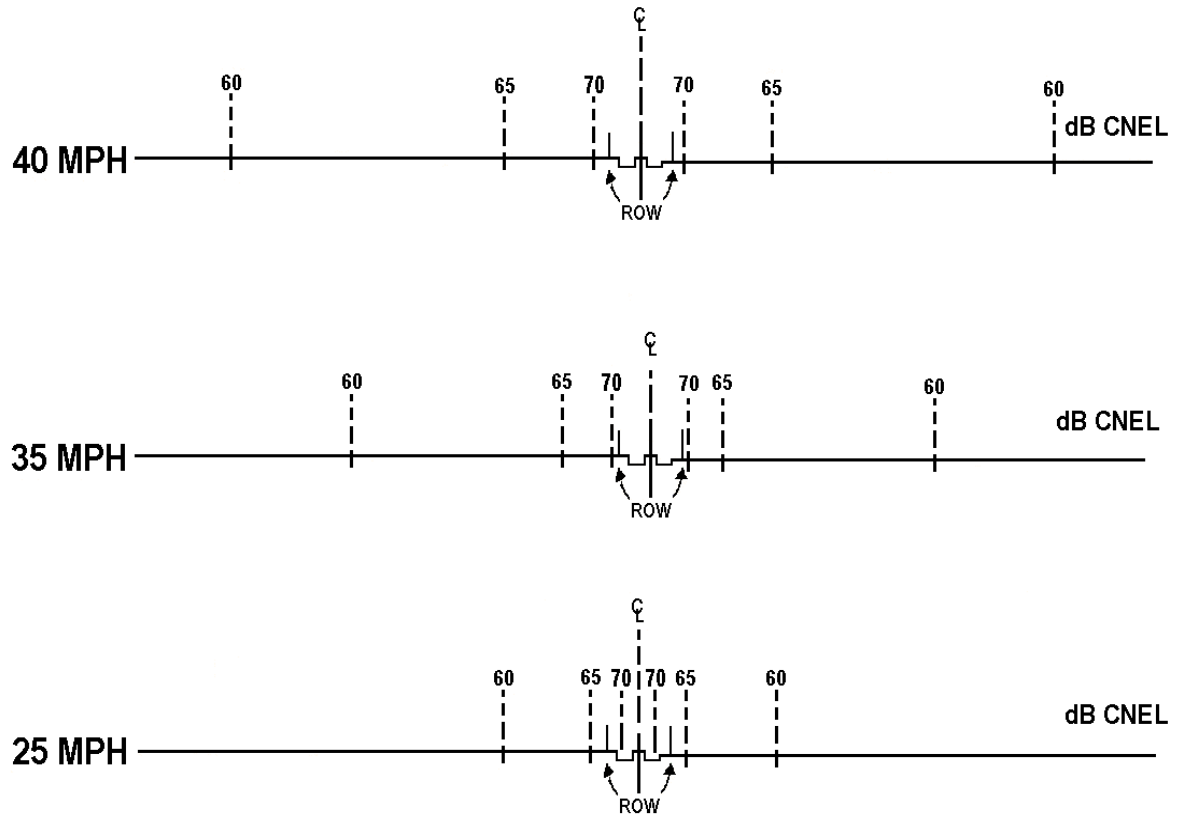


Figure VIII-3



PRIMARY ARTERIAL HIGHWAY
30,000 Average Daily Traffic

NOTES: Calculations based on hard site, flat terrain, 180° angle of view, standard County truck/auto mix, 0-2% roadway gradient, roadway at level of service C, and no contributions from other noise sources.

C: Center Line ROW: Right-of-Way Line

EFFECT OF SPEED ON COMMUNITY NOISE EQUIVALENT LEVELS