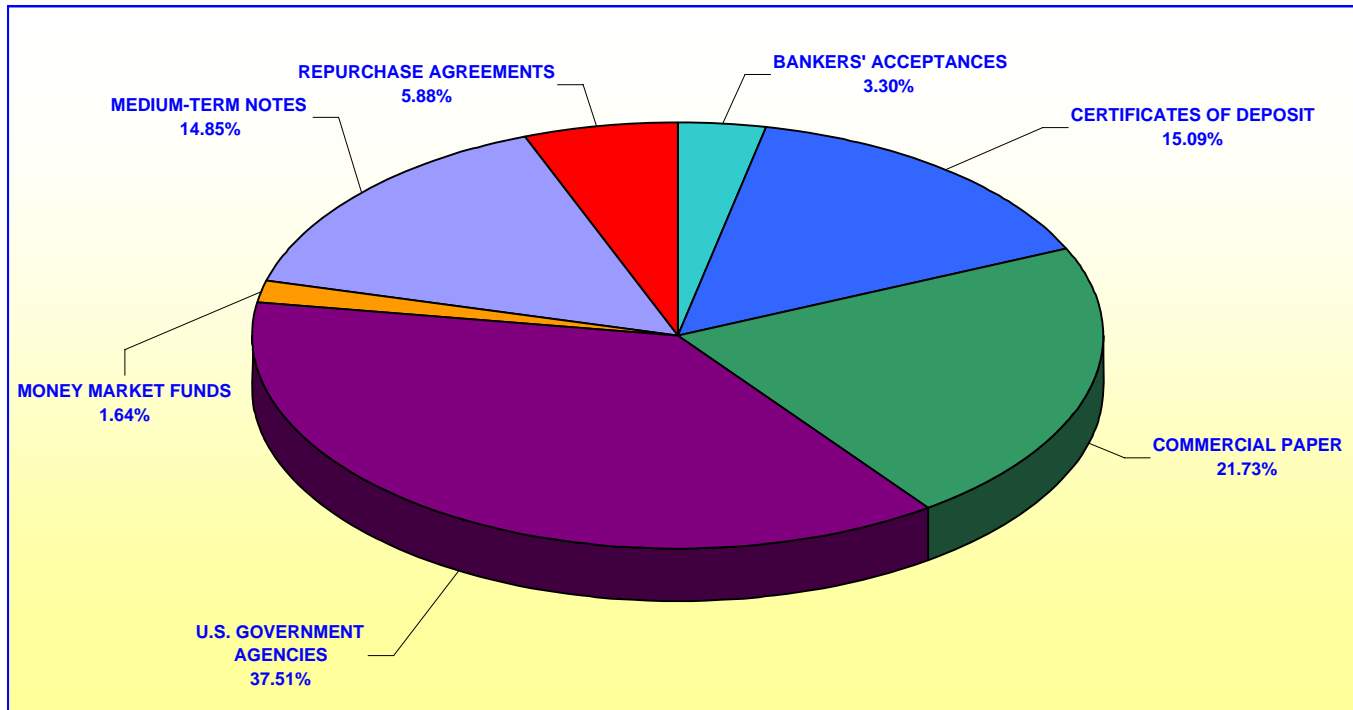


ORANGE COUNTY TREASURER - TAX COLLECTOR
ORANGE COUNTY INVESTMENT POOL
PORTFOLIO COMPOSITION - COMBINED **
September 30, 2005



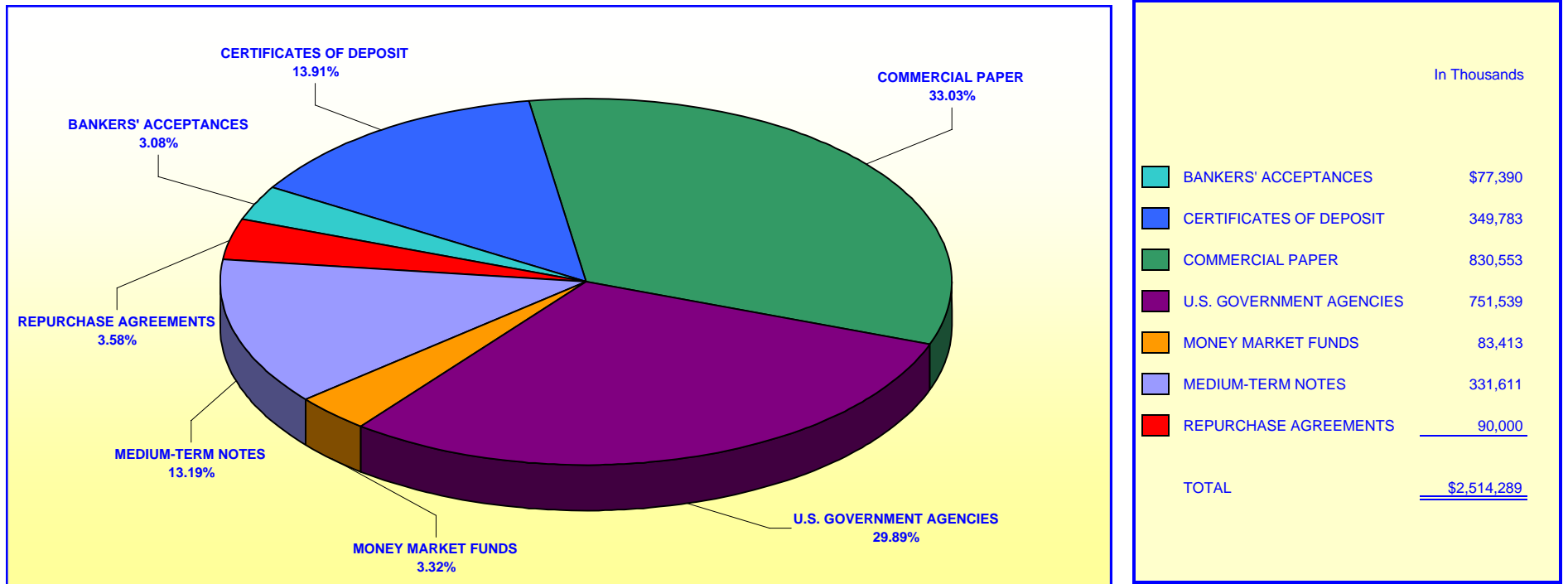
In Thousands	
BANKERS' ACCEPTANCES	\$84,053
CERTIFICATES OF DEPOSIT	384,907
COMMERCIAL PAPER	554,314
U.S. GOVERNMENT AGENCIES	956,823
MONEY MARKET FUNDS	41,725
MEDIUM-TERM NOTES	378,811
REPURCHASE AGREEMENTS	<u>150,000</u>
TOTAL	<u><u>\$2,550,633</u></u>

Investment Composition Is In Compliance With The Orange County Treasurer's Investment Policy Statement

*** Calculated Using Market Value at 09/30/2005*

**ORANGE COUNTY TREASURER - TAX COLLECTOR
ORANGE COUNTY EDUCATIONAL INVESTMENT POOL
PORTFOLIO COMPOSITION - COMBINED ****

September 30, 2005



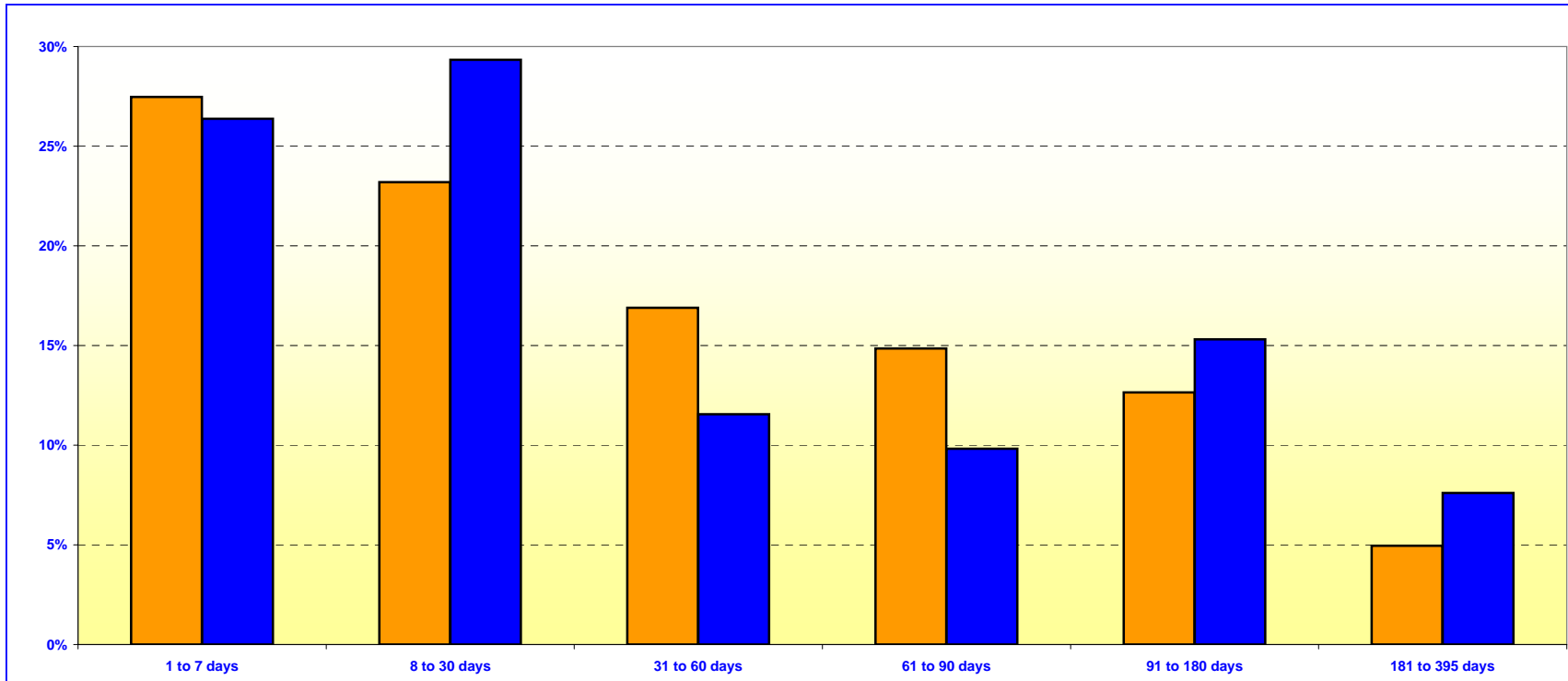
Investment Composition Is In Compliance With The Orange County Treasurer's Investment Policy Statement

**** Calculated Using Market Value at 09/30/2005**

ORANGE COUNTY TREASURER - TAX COLLECTOR
ORANGE COUNTY MONEY MARKET FUND AND EDUCATIONAL MONEY MARKET FUND

MATURITIES DISTRIBUTION

September 30, 2005



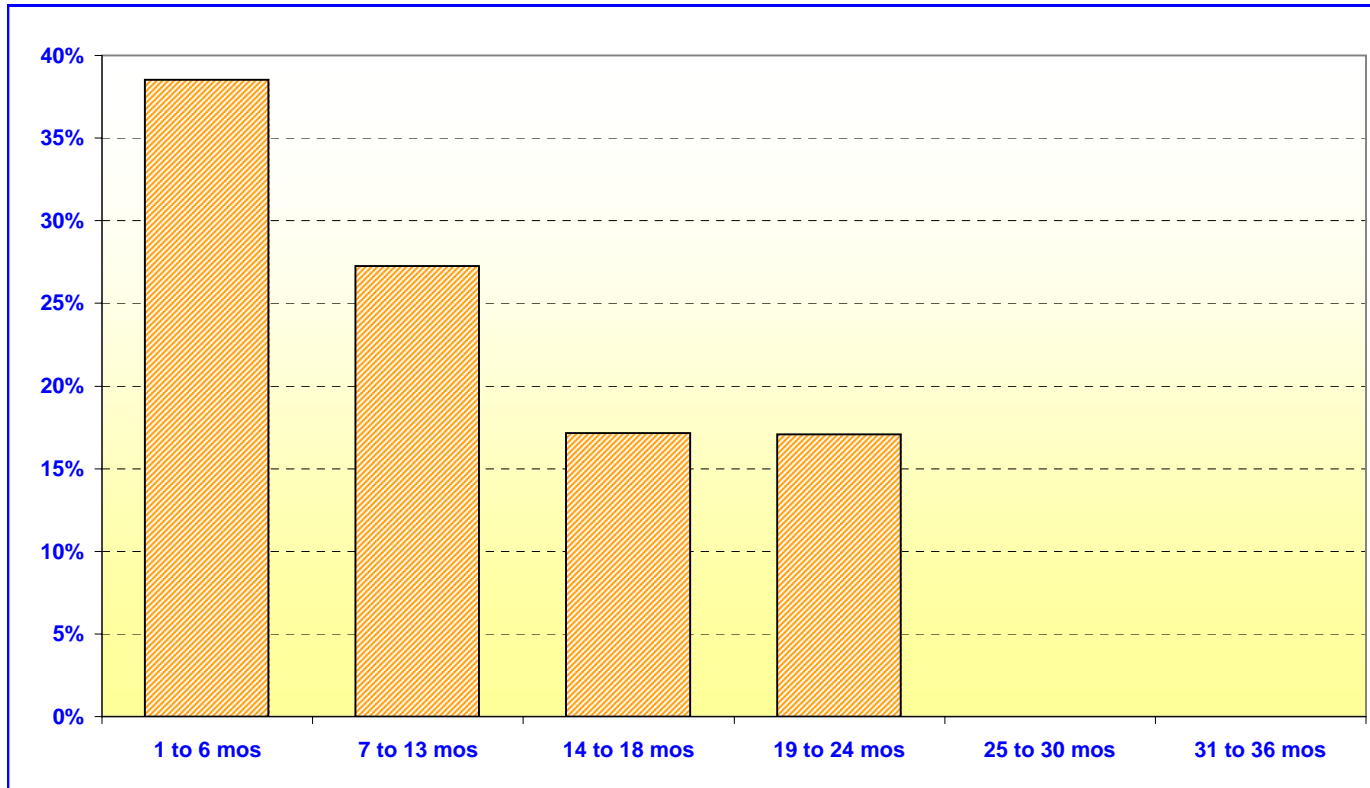
O.C. INVESTMENT POOL MONEY MARKET FUND		
	In Thousands	%
1 TO 7 DAYS	\$416,229	27.47%
8 TO 30 DAYS	351,440	23.19%
31 TO 60 DAYS	256,000	16.89%
61 TO 90 DAYS	225,042	14.85%
91 TO 180 DAYS	191,756	12.65%
181 TO 395 DAYS	75,000	4.95%
TOTAL	\$1,515,467	100.00%

O.C. EDUCATIONAL MONEY MARKET FUND		
	In Thousands	%
1 TO 7 DAYS	\$520,213	26.37%
8 TO 30 DAYS	578,549	29.33%
31 TO 60 DAYS	228,000	11.56%
61 TO 90 DAYS	193,700	9.82%
91 TO 180 DAYS	301,970	15.31%
181 TO 395 DAYS	150,000	7.61%
TOTAL	\$1,972,432	100.00%

Maturity Limits Are In Compliance With The Orange County Treasurer's Investment Policy Statement

Floating Rate Notes are deemed to have a maturity date equal to their next interest reset date.
 At September 30, 2005, Floating Rate Notes comprise 8.71% and 10.30% of the O.C. Money Market Fund and Educational Money Market Fund respectively.

ORANGE COUNTY TREASURER - TAX COLLECTOR
ORANGE COUNTY INVESTMENT POOL - EXTENDED FUND
MATURITIES DISTRIBUTION
September 30, 2005



O.C. INVESTMENT POOL EXTENDED FUND		
	In Thousands	%
1 TO 6 MOS	\$615,345	38.53%
7 TO 13 MOS	435,250	27.25%
14 TO 18 MOS	273,752	17.14%
19 TO 24 MOS	272,850	17.08%
25 TO 30 MOS	0	0.00%
31 TO 36 MOS	0	0.00%
TOTAL	<u>\$1,597,197</u>	<u>100.00%</u>

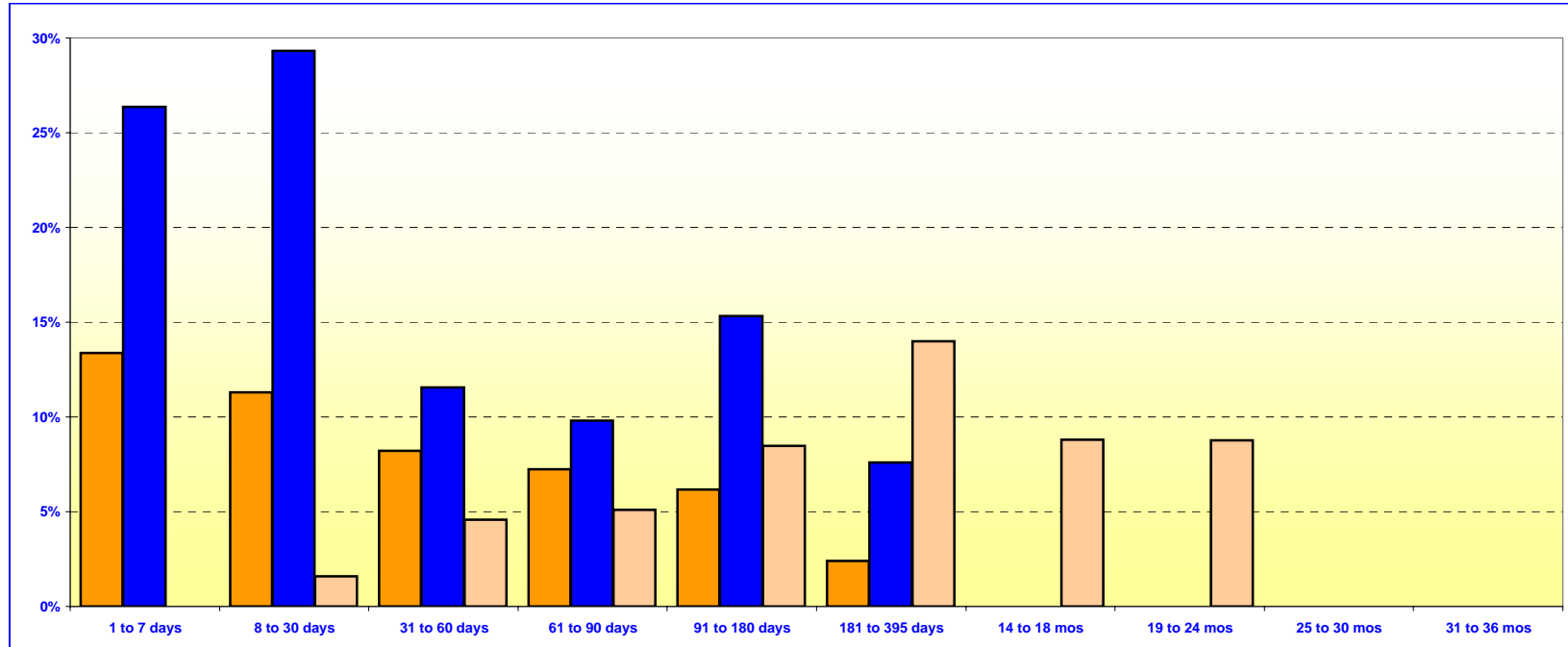
Maturity Limits Are In Compliance With The Orange County Treasurer's Investment Policy Statement

Floating Rate Notes are deemed to have a maturity date equal to their next interest reset date.
 At September 30, 2005, Floating Rate Notes comprise 16.59% of the O.C. Extended Fund.

ORANGE COUNTY TREASURER - TAX COLLECTOR
ORANGE COUNTY AND EDUCATIONAL INVESTMENT POOLS

MATURITIES DISTRIBUTION

September 30, 2005



O.C. INVESTMENT POOL				
			In Thousands	%
Money Market Fund	1 TO 7 DAYS		\$416,229	13.37%
Money Market Fund	8 TO 30 DAYS		351,440	11.29%
Money Market Fund	31 TO 60 DAYS		256,000	8.22%
Money Market Fund	61 TO 90 DAYS		225,042	7.23%
Money Market Fund	91 TO 180 DAYS		191,756	6.16%
Money Market Fund	181 TO 395 DAYS		75,000	2.41%
Extended Fund	1 TO 7 DAYS		0	0.00%
Extended Fund	8 TO 30 DAYS		50,000	1.61%
Extended Fund	31 TO 60 DAYS		142,265	4.57%
Extended Fund	61 TO 90 DAYS		159,000	5.11%
Extended Fund	91 TO 180 DAYS		264,080	8.48%
Extended Fund	181 TO 395 DAYS		435,250	13.98%
Extended Fund	14 TO 18 MONTHS		273,752	8.79%
Extended Fund	19 TO 24 MONTHS		272,850	8.78%
Extended Fund	25 TO 30 MONTHS		0	0.00%
Extended Fund	31 TO 36 MONTHS		0	0.00%
TOTAL			<u>\$3,112,664</u>	<u>100.00%</u>

O.C. EDUCATIONAL MONEY MARKET FUND		
	In Thousands	%
1 TO 7 DAYS	\$520,213	26.37%
8 TO 30 DAYS	578,549	29.33%
31 TO 60 DAYS	228,000	11.56%
61 TO 90 DAYS	193,700	9.82%
91 TO 180 DAYS	301,970	15.31%
181 TO 395 DAYS	<u>150,000</u>	<u>7.61%</u>
TOTAL		<u>\$1,972,432 100.00%</u>

Maturity Limits Are In Compliance With The Orange County Treasurer's Investment Policy Statement

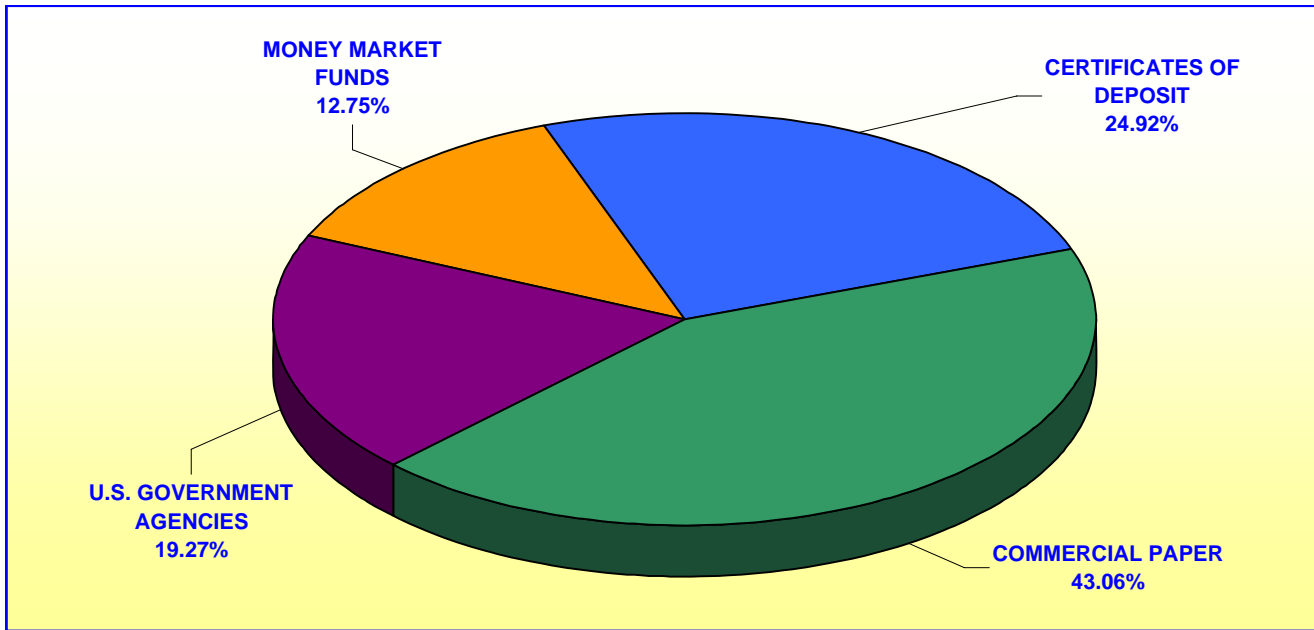
Floating Rate Notes are deemed to have a maturity date equal to their next interest reset date.
 At September 30, 2005, Floating Rate Notes comprise 12.75% and 10.30% of the O.C. Investment Pool and Educational Money Market Fund respectively.

ORANGE COUNTY TREASURER - TAX COLLECTOR

JOHN WAYNE AIRPORT INVESTMENT POOL

PORTFOLIO COMPOSITION **

September 30, 2005



	In Thousands
CERTIFICATES OF DEPOSIT	\$12,599
COMMERCIAL PAPER	21,771
U.S. GOVERNMENT AGENCIES	9,740
MONEY MARKET FUNDS	<u>6,447</u>
TOTAL	<u><u>\$50,557</u></u>

Investment Composition Is In Compliance With The Orange County Treasurer's Investment Policy Statement

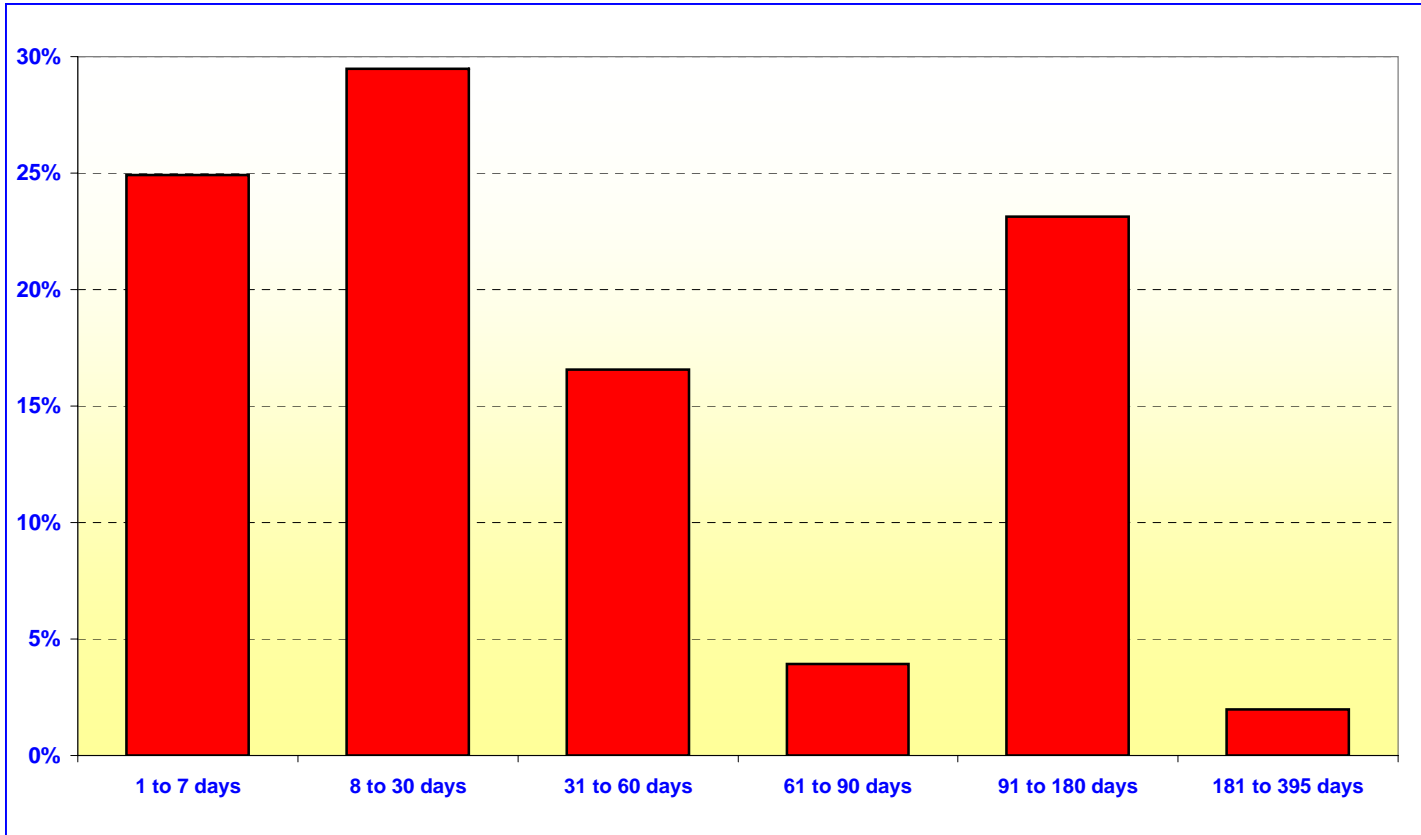
*** Calculated Using Market Value at 09/30/2005*

ORANGE COUNTY TREASURER - TAX COLLECTOR

JOHN WAYNE AIRPORT INVESTMENT POOL

MATURITIES DISTRIBUTION

September 30, 2005



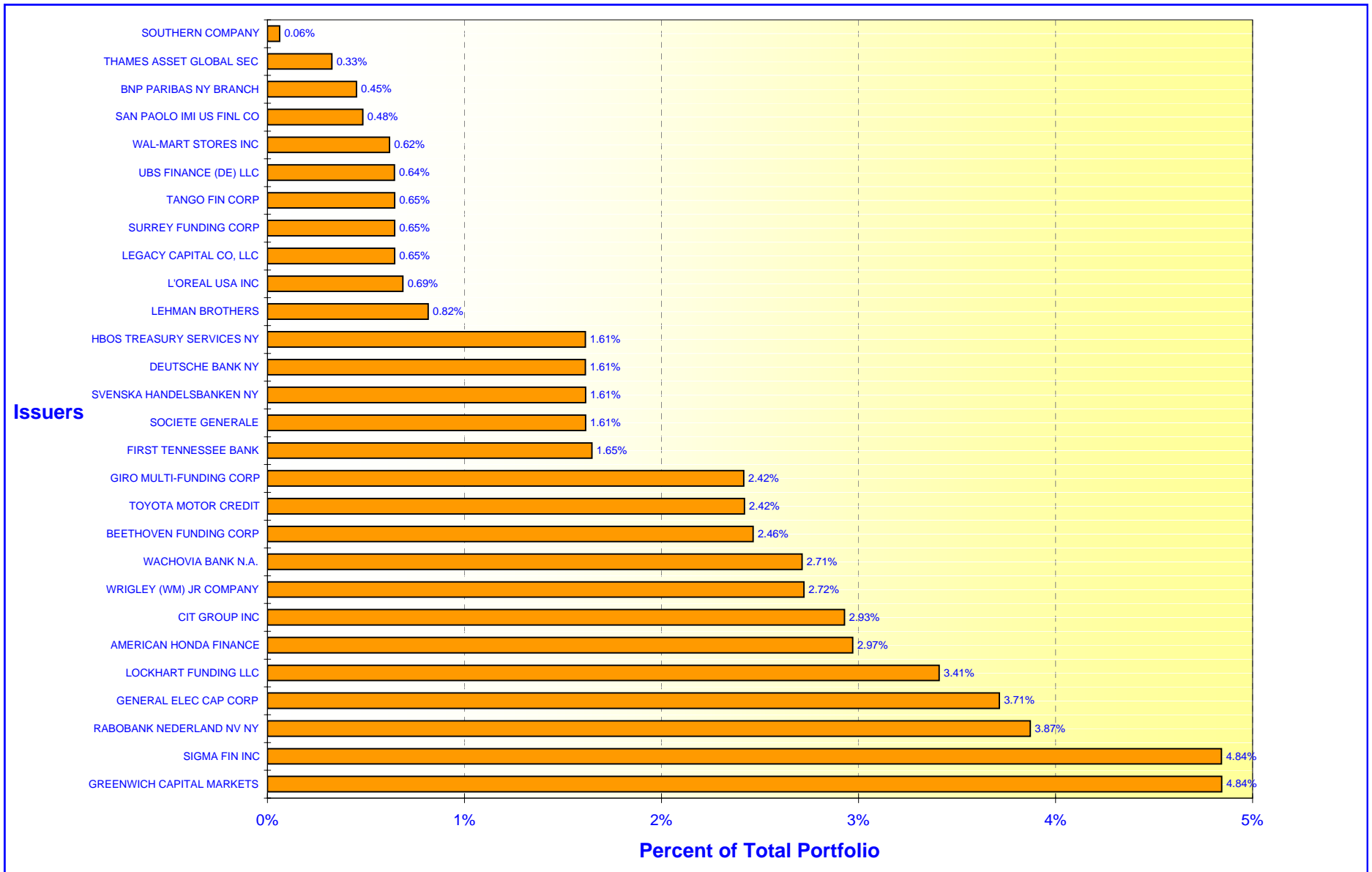
JOHN WAYNE AIRPORT		
	In Thousands	%
1 TO 7 DAYS	\$12,647	24.92%
8 TO 30 DAYS	14,961	29.49%
31 TO 60 DAYS	8,400	16.55%
61 TO 90 DAYS	2,000	3.94%
91 TO 180 DAYS	11,735	23.13%
181 TO 395 DAYS	<u>1,000</u>	<u>1.97%</u>
TOTAL	<u>\$50,743</u>	<u>100.00%</u>

Maturity Limits Are In Compliance With The Orange County Treasurer's Investment Policy Statement

ORANGE COUNTY TREASURER - TAX COLLECTOR

ORANGE COUNTY INVESTMENT POOL - ISSUER CONCENTRATION

September 30, 2005



ORANGE COUNTY TREASURER - TAX COLLECTOR

EDUCATIONAL INVESTMENT POOL - ISSUER CONCENTRATION

September 30, 2005

