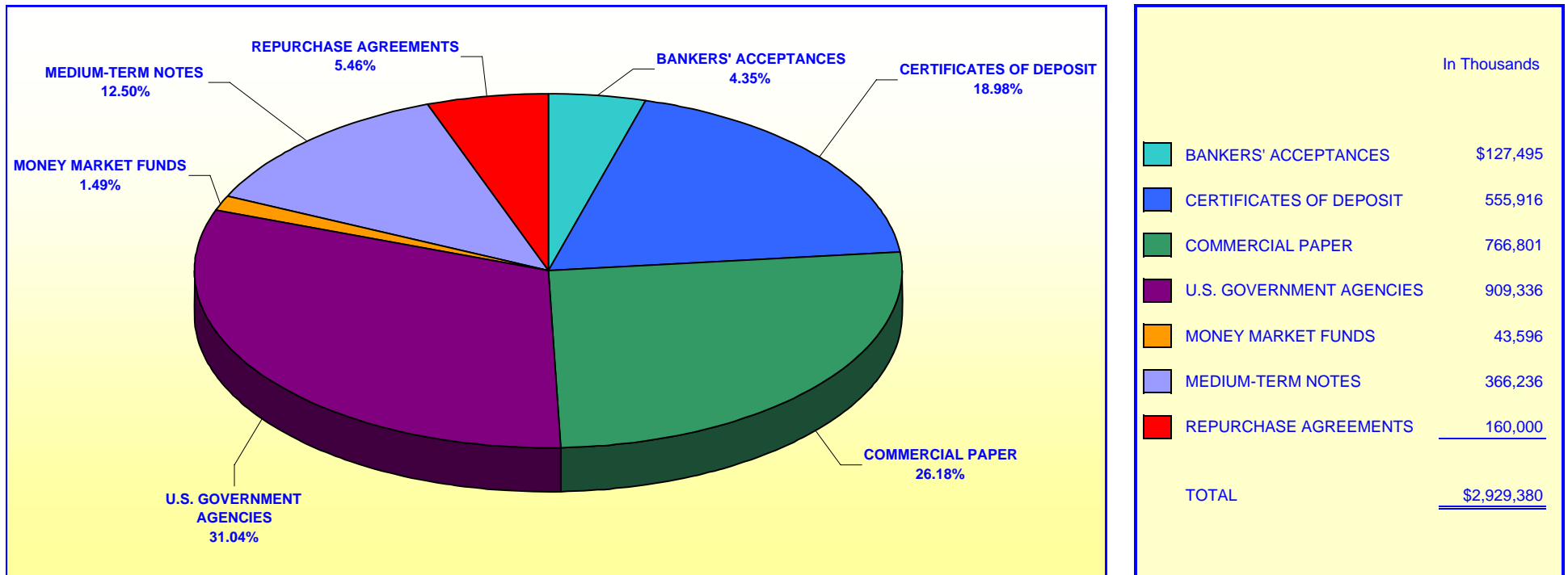


ORANGE COUNTY TREASURER - TAX COLLECTOR
ORANGE COUNTY INVESTMENT POOL
PORTFOLIO COMPOSITION - COMBINED **
June 30, 2005

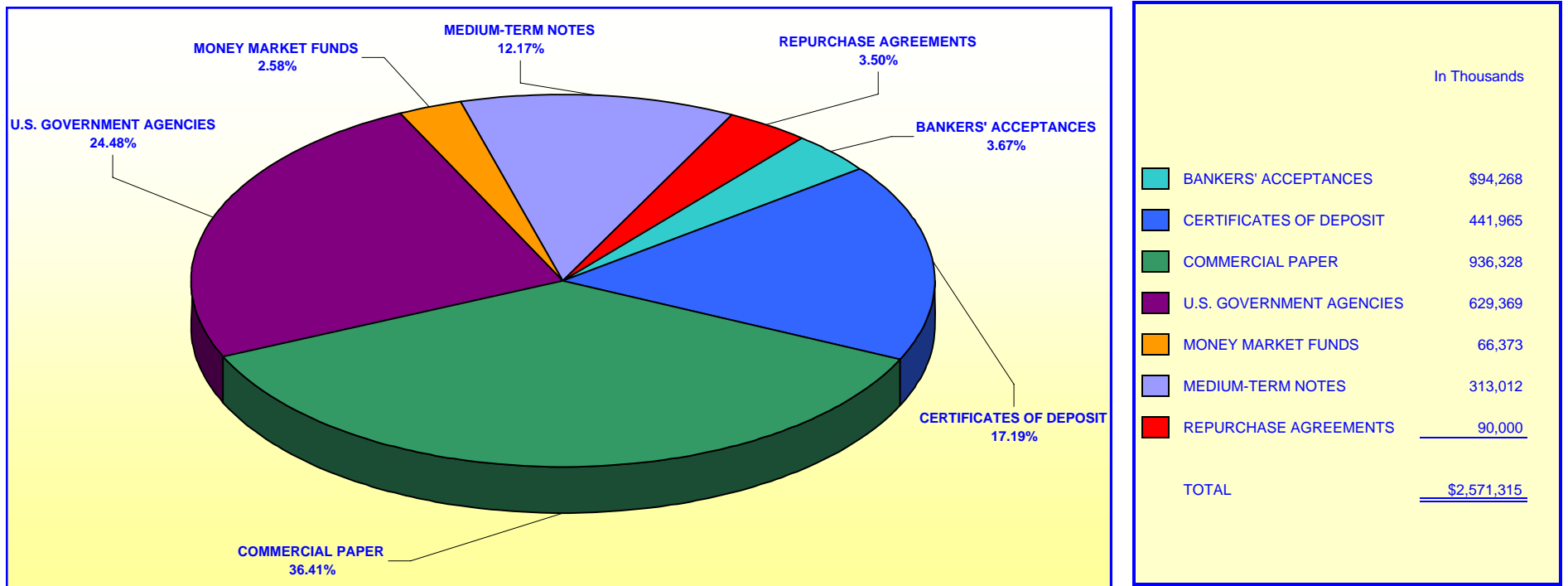


Investment Composition Is In Compliance With The Orange County Treasurer's Investment Policy Statement

**** Calculated Based Upon Market Value at 06/30/2005**

**ORANGE COUNTY TREASURER - TAX COLLECTOR
ORANGE COUNTY EDUCATIONAL INVESTMENT POOL
PORTFOLIO COMPOSITION - COMBINED ****

June 30, 2005



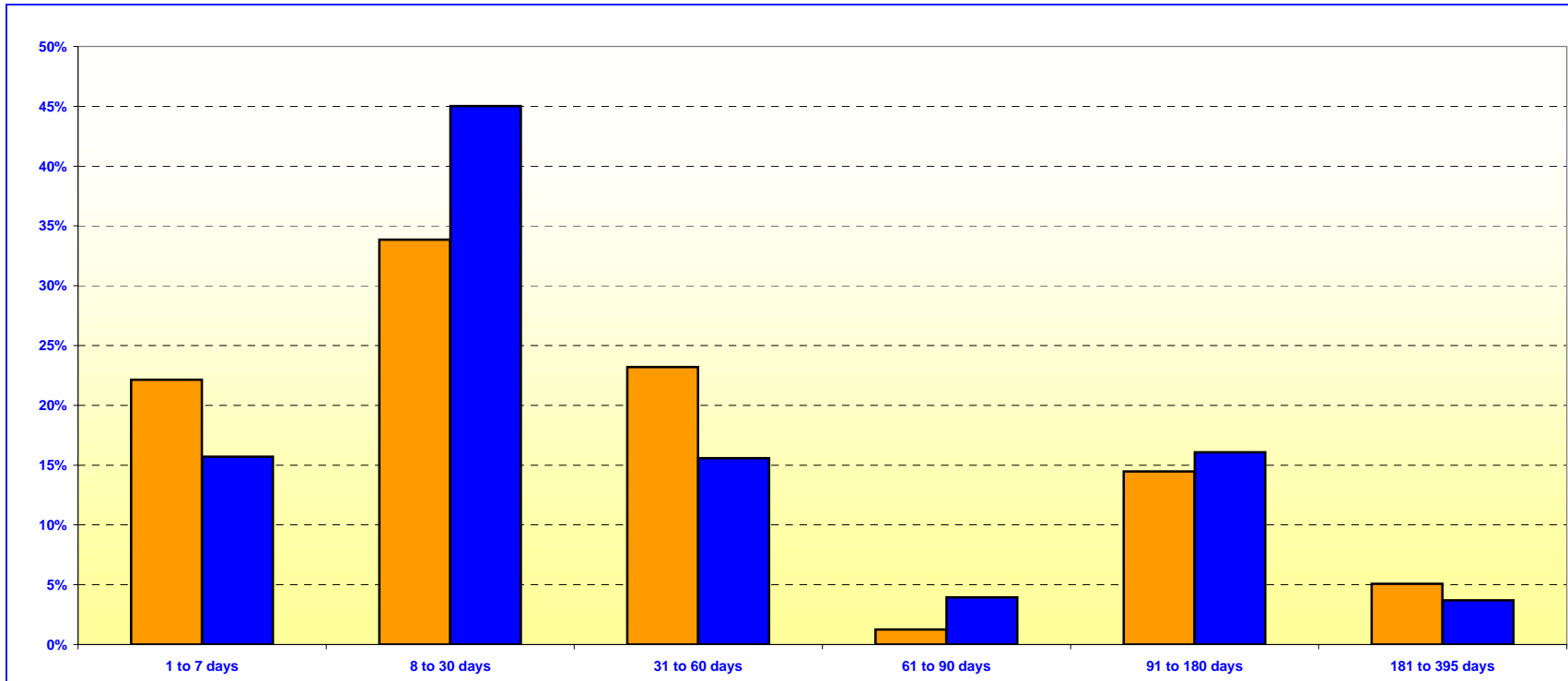
Investment Composition Is In Compliance With The Orange County Treasurer's Investment Policy Statement

**** Calculated Based Upon Market Value at 06/30/2005**

ORANGE COUNTY TREASURER - TAX COLLECTOR
ORANGE COUNTY MONEY MARKET FUND AND EDUCATIONAL MONEY MARKET FUND

MATURITIES DISTRIBUTION

June 30, 2005



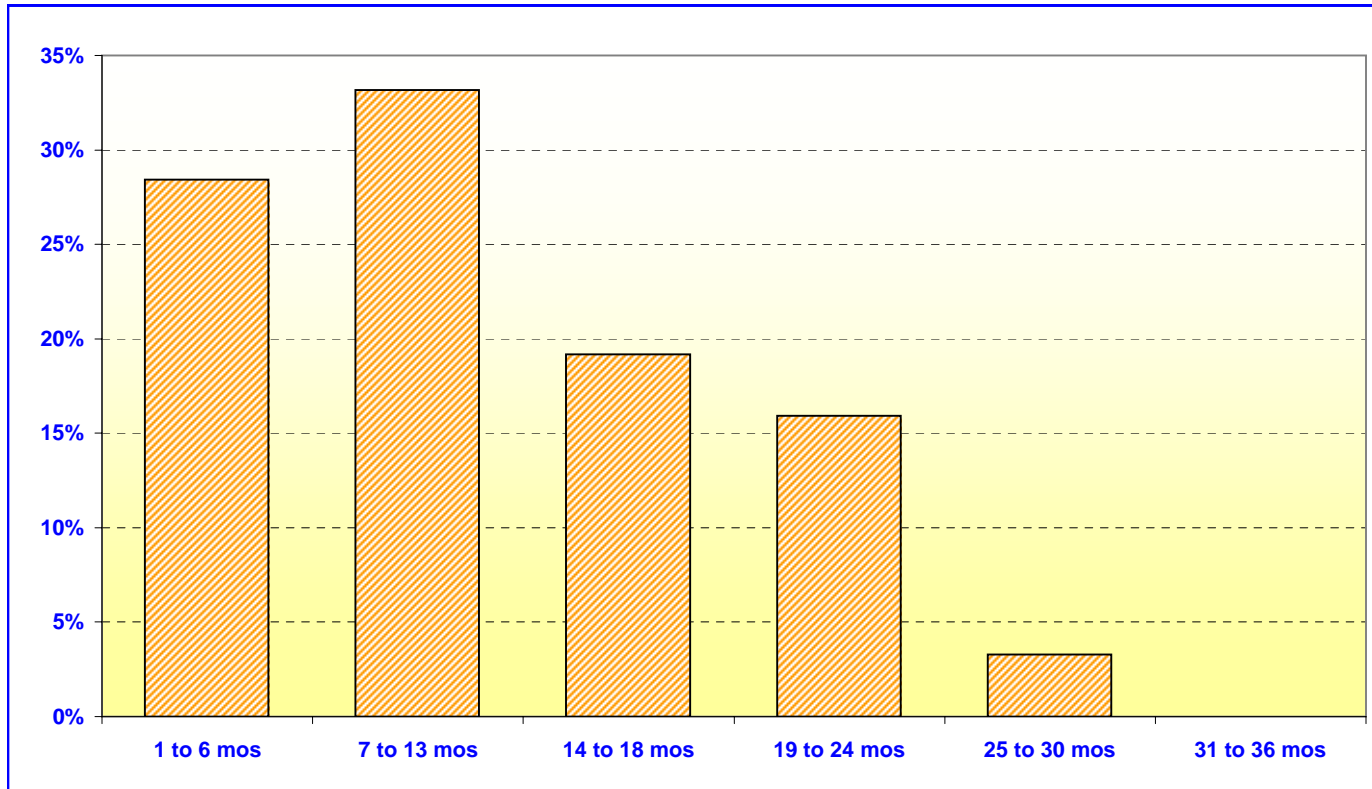
O.C. INVESTMENT POOL MONEY MARKET FUND		
	In Thousands	%
1 TO 7 DAYS	\$436,298	22.15%
8 TO 30 DAYS	666,645	33.84%
31 TO 60 DAYS	457,000	23.20%
61 TO 90 DAYS	25,000	1.27%
91 TO 180 DAYS	285,042	14.47%
181 TO 395 DAYS	100,000	5.07%
TOTAL	\$1,969,985	100.00%

O.C. EDUCATIONAL MONEY MARKET FUND		
	In Thousands	%
1 TO 7 DAYS	\$318,427	15.70%
8 TO 30 DAYS	913,181	45.02%
31 TO 60 DAYS	315,922	15.57%
61 TO 90 DAYS	80,000	3.94%
91 TO 180 DAYS	325,874	16.07%
181 TO 395 DAYS	75,000	3.70%
TOTAL	\$2,028,404	100.00%

Maturity Limits Are In Compliance With The Orange County Treasurer's Investment Policy Statement

Floating Rate Notes are deemed to have a maturity date equal to their next interest reset date.
 At June 30, 2005, Floating Rate Notes comprise 7.46% and 9.47% of the O.C. Money Market Fund and Educational Money Market Fund respectively.

ORANGE COUNTY TREASURER - TAX COLLECTOR
ORANGE COUNTY INVESTMENT POOL - EXTENDED FUND
MATURITIES DISTRIBUTION
June 30, 2005



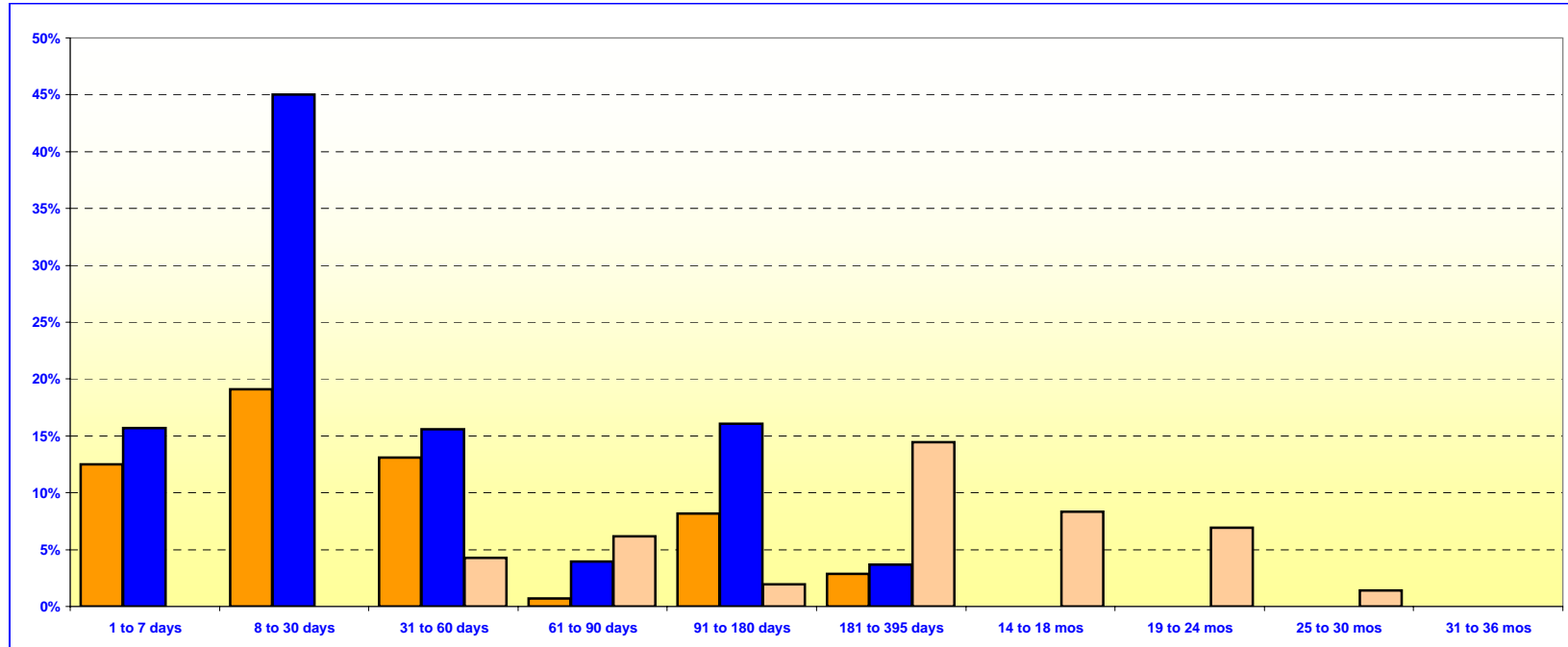
O.C. INVESTMENT POOL EXTENDED FUND		
	In Thousands	%
1 TO 6 MOS	\$432,293	28.43%
7 TO 13 MOS	504,330	33.17%
14 TO 18 MOS	291,650	19.18%
19 TO 24 MOS	242,102	15.93%
25 TO 30 MOS	50,000	3.29%
31 TO 36 MOS	<u>0</u>	<u>0.00%</u>
TOTAL	<u>\$1,520,375</u>	<u>100.00%</u>

Maturity Limits Are In Compliance With The Orange County Treasurer's Investment Policy Statement

Floating Rate Notes are deemed to have a maturity date equal to their next interest reset date.
 At June 30, 2005, Floating Rate Notes comprise 17.43% of the O.C. Extended Fund

ORANGE COUNTY TREASURER - TAX COLLECTOR
ORANGE COUNTY AND EDUCATIONAL INVESTMENT POOLS
MATURITIES DISTRIBUTION

June 30, 2005



O.C. INVESTMENT POOL				
			In Thousands	%
Money Market Fund	1 TO 7 DAYS		\$436,298	12.50%
Money Market Fund	8 TO 30 DAYS		666,645	19.10%
Money Market Fund	31 TO 60 DAYS		457,000	13.09%
Money Market Fund	61 TO 90 DAYS		25,000	0.71%
Money Market Fund	91 TO 180 DAYS		285,042	8.17%
Money Market Fund	181 TO 395 DAYS		100,000	2.86%
Extended Fund	1 TO 7 DAYS		0	0.00%
Extended Fund	8 TO 30 DAYS		0	0.00%
Extended Fund	31 TO 60 DAYS		149,328	4.28%
Extended Fund	61 TO 90 DAYS		215,700	6.18%
Extended Fund	91 TO 180 DAYS		67,265	1.93%
Extended Fund	181 TO 395 DAYS		504,330	14.45%
Extended Fund	14 TO 18 MONTHS		291,650	8.36%
Extended Fund	19 TO 24 MONTHS		242,102	6.94%
Extended Fund	25 TO 30 MONTHS		50,000	1.43%
Extended Fund	31 TO 36 MONTHS		0	0.00%
TOTAL			\$3,490,360	100.00%

O.C. EDUCATIONAL MONEY MARKET FUND		
	In Thousands	%
1 TO 7 DAYS	\$318,427	15.70%
8 TO 30 DAYS	913,181	45.02%
31 TO 60 DAYS	315,922	15.57%
61 TO 90 DAYS	80,000	3.94%
91 TO 180 DAYS	325,874	16.07%
181 TO 395 DAYS	75,000	3.70%
TOTAL		\$2,028,404 100.00%

Maturity Limits Are In Compliance With The Orange County Treasurer's Investment Policy Statement

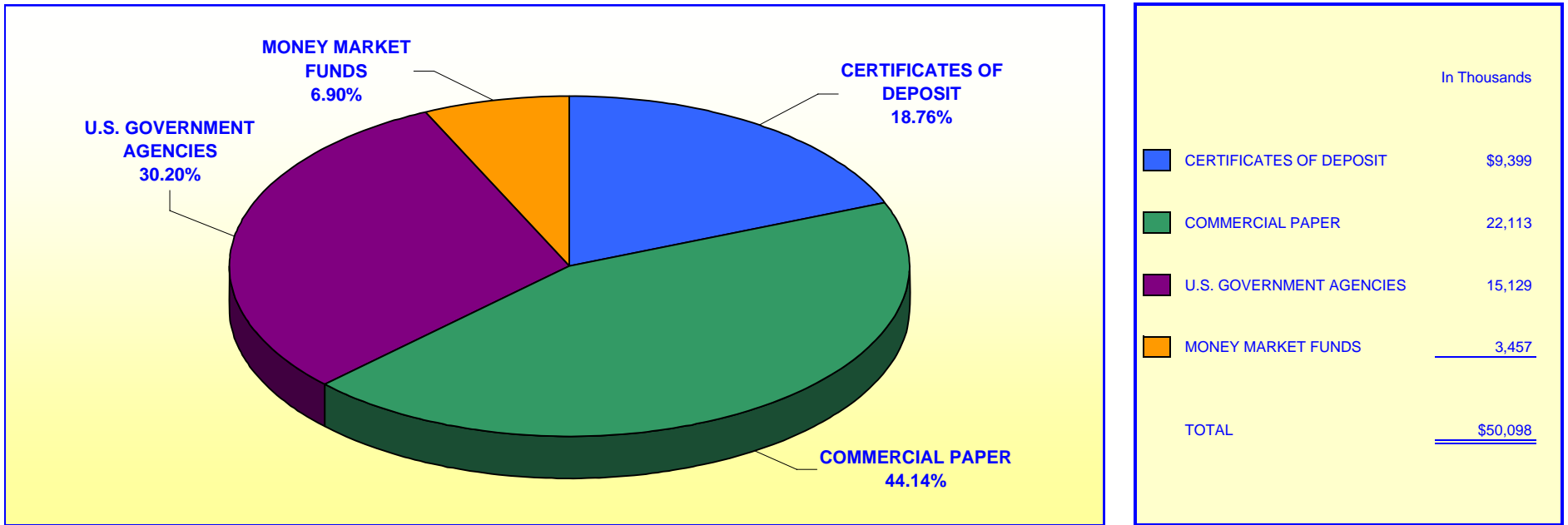
Floating Rate Notes are deemed to have a maturity date equal to their next interest reset date.
 At June 30, 2005, Floating Rate Notes comprise 11.80% and 9.47% of the O.C. Investment Pool and Educational Money Market Fund respectively.

ORANGE COUNTY TREASURER - TAX COLLECTOR

JOHN WAYNE AIRPORT INVESTMENT POOL

PORTFOLIO COMPOSITION **

June 30, 2005



Investment Composition Is In Compliance With The Orange County Treasurer's Investment Policy Statement

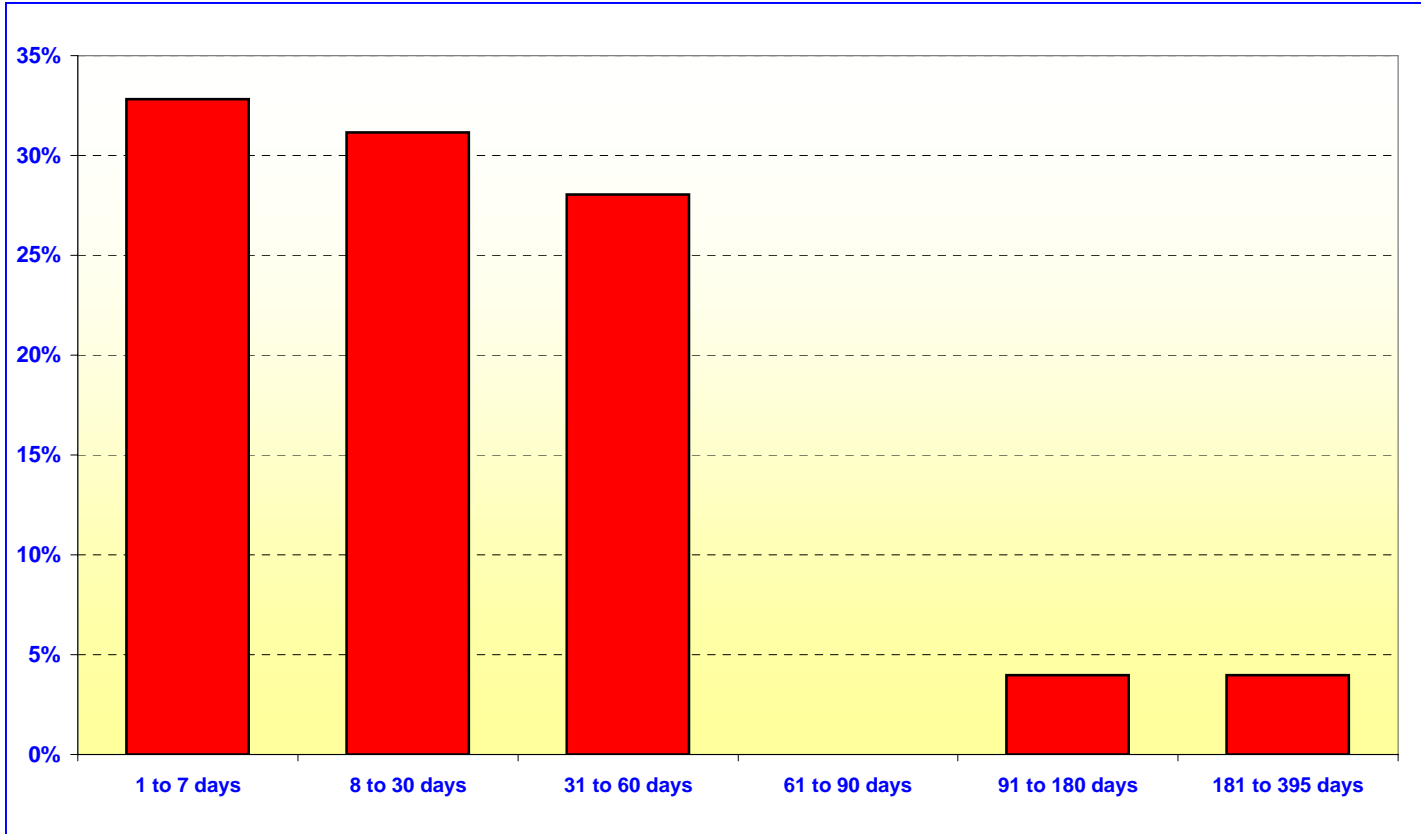
***** Calculated Based Upon Market Value at 06/30/2005***

ORANGE COUNTY TREASURER - TAX COLLECTOR

JOHN WAYNE AIRPORT INVESTMENT POOL

MATURITIES DISTRIBUTION

June 30, 2005



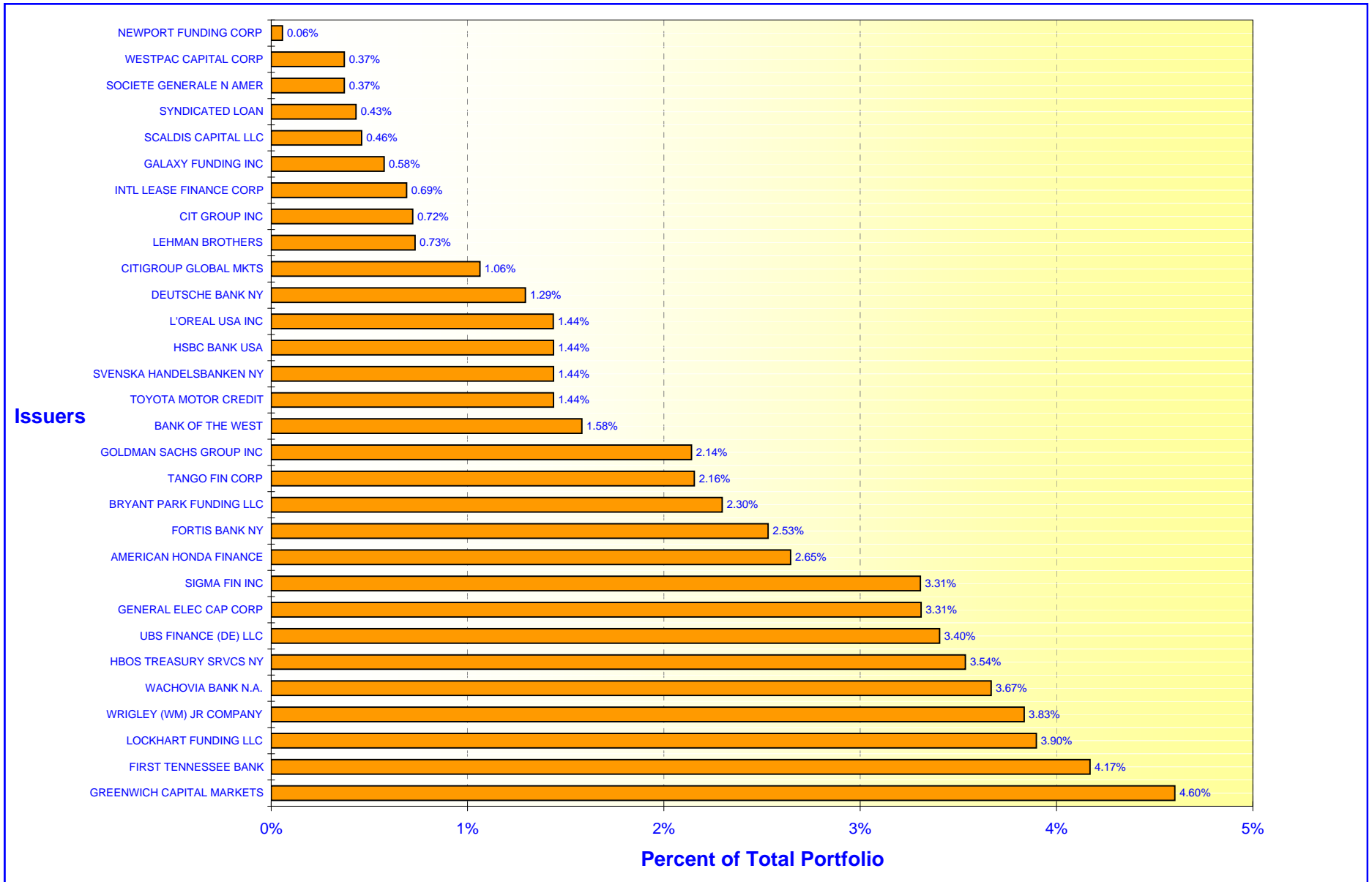
JOHN WAYNE AIRPORT		
	In Thousands	%
1 TO 7 DAYS	\$16,467	32.81%
8 TO 30 DAYS	15,645	31.17%
31 TO 60 DAYS	14,084	28.06%
61 TO 90 DAYS	0	0.00%
91 TO 180 DAYS	2,000	3.98%
181 TO 395 DAYS	<u>2,000</u>	<u>3.98%</u>
TOTAL	<u>\$50,196</u>	<u>100.00%</u>

Maturity Limits Are In Compliance With The Orange County Treasurer's Investment Policy Statement

ORANGE COUNTY TREASURER - TAX COLLECTOR

ORANGE COUNTY INVESTMENT POOL - ISSUER CONCENTRATION

June 30, 2005



ORANGE COUNTY TREASURER - TAX COLLECTOR

EDUCATIONAL INVESTMENT POOL - ISSUER CONCENTRATION

June 30, 2005

