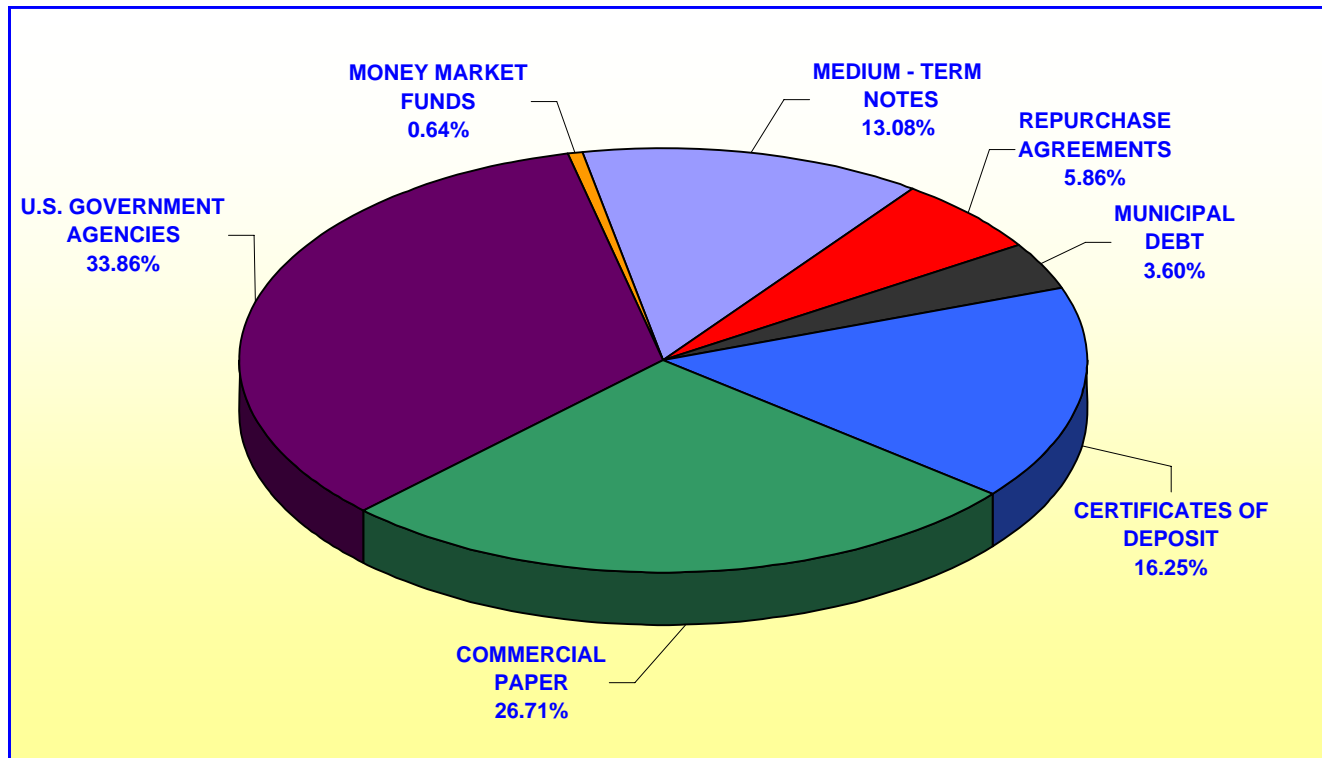


**ORANGE COUNTY TREASURER - TAX COLLECTOR  
ORANGE COUNTY INVESTMENT POOL  
PORTFOLIO COMPOSITION - COMBINED \*\***

**May 31, 2006**



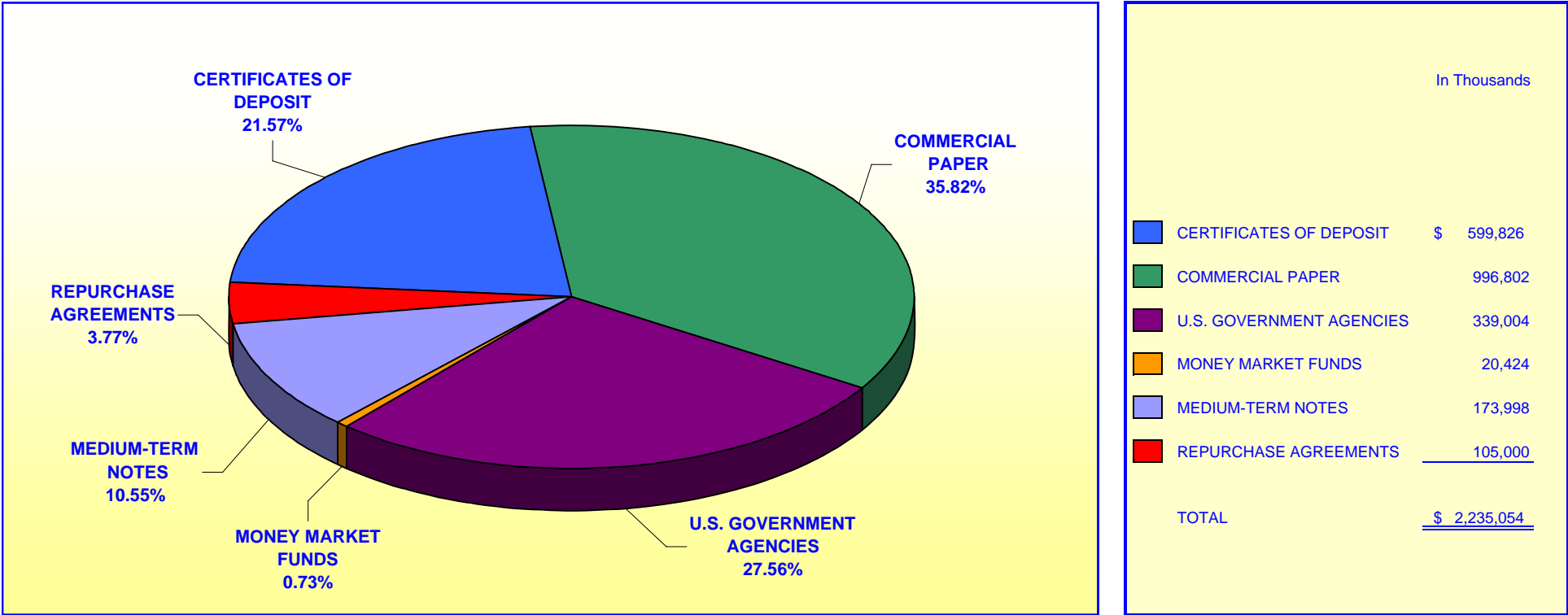
		In Thousands
	CERTIFICATES OF DEPOSIT	\$ 484,912
	COMMERCIAL PAPER	796,925
	U.S. GOVERNMENT AGENCIES	1,438,395
	MONEY MARKET FUNDS	19,052
	MEDIUM-TERM NOTES	509,929
	REPURCHASE AGREEMENTS	175,000
	MUNICIPAL DEBT	107,287
TOTAL		<u>\$ 3,531,500</u>

***Investment Composition Is In Compliance With The Orange County Treasurer's Investment Policy Statement***

**\*\* Calculated Using Market Value at 05/31/2006**

**ORANGE COUNTY TREASURER - TAX COLLECTOR  
ORANGE COUNTY EDUCATIONAL INVESTMENT POOL  
PORTFOLIO COMPOSITION - COMBINED \*\***

May 31, 2006



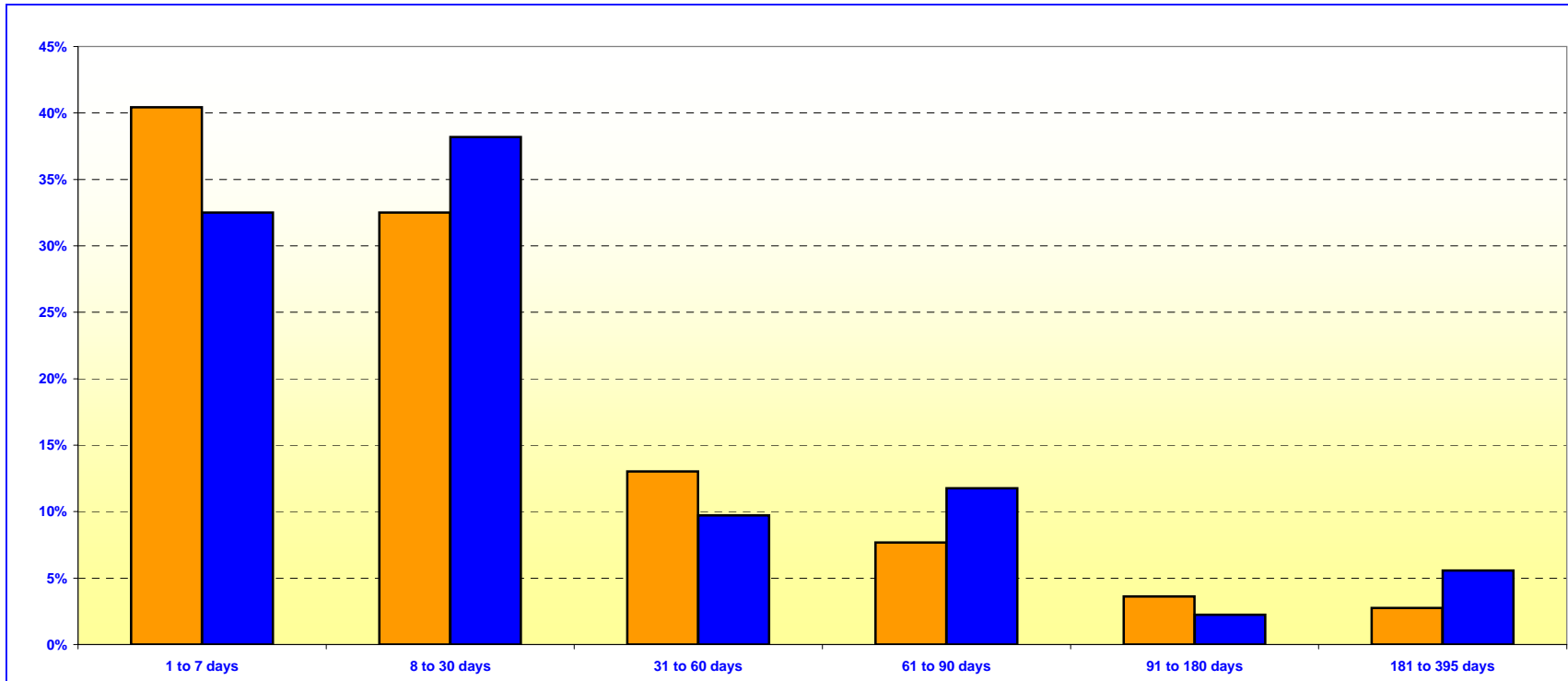
*Investment Composition Is In Compliance With The Orange County Treasurer's Investment Policy Statement*

\*\* Calculated Using Market Value at 5/31/2006

**ORANGE COUNTY TREASURER - TAX COLLECTOR**  
**ORANGE COUNTY MONEY MARKET FUND AND EDUCATIONAL MONEY MARKET FUND**

**MATURITIES DISTRIBUTION**

May 31, 2006



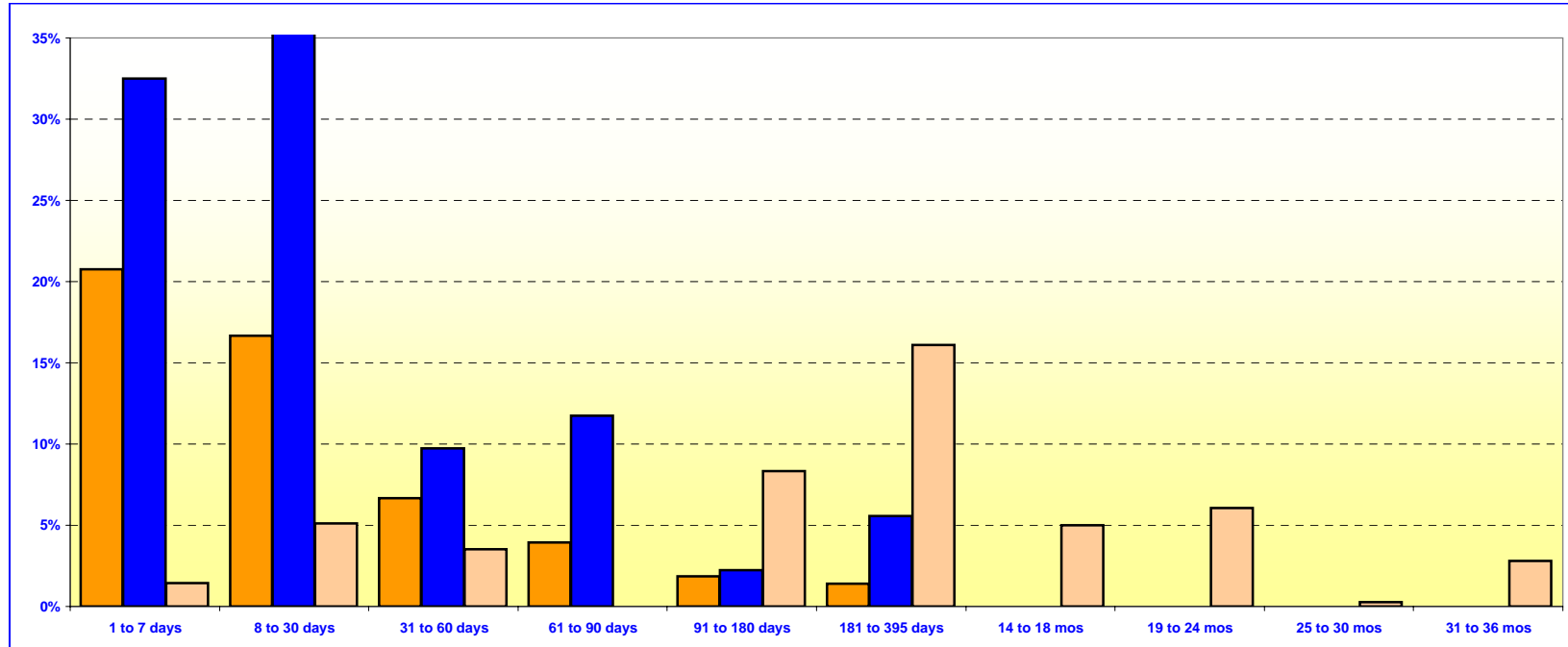
<b>O.C. INVESTMENT POOL MONEY MARKET FUND</b>			
	In Thousands		%
1 TO 7 DAYS	\$ 735,902		40.43%
8 TO 30 DAYS	591,760		32.51%
31 TO 60 DAYS	237,000		13.02%
61 TO 90 DAYS	139,700		7.67%
91 TO 180 DAYS	66,000		3.62%
181 TO 395 DAYS	50,000		2.75%
<b>TOTAL</b>	<b>\$ 1,820,362</b>		<b>100.00%</b>

<b>O.C. EDUCATIONAL MONEY MARKET FUND</b>			
	In Thousands		%
1 TO 7 DAYS	\$ 727,805		32.52%
8 TO 30 DAYS	854,750		38.19%
31 TO 60 DAYS	217,650		9.72%
61 TO 90 DAYS	263,000		11.75%
91 TO 180 DAYS	50,100		2.24%
181 TO 395 DAYS	124,853		5.58%
<b>TOTAL</b>	<b>\$ 2,238,158</b>		<b>100.00%</b>

***Maturity Limits Are In Compliance With The Orange County Treasurer's Investment Policy Statement***

Floating Rate Notes are deemed to have a maturity date equal to their next interest reset date.  
 At May 31, 2006, Floating Rate Notes comprise 12.47% and 6.66% of the O.C. Money Market Fund and Educational Money Market Fund respectively.

**ORANGE COUNTY TREASURER - TAX COLLECTOR**  
**ORANGE COUNTY AND EDUCATIONAL INVESTMENT POOLS**  
**MATURITIES DISTRIBUTION**  
**May 31, 2006**



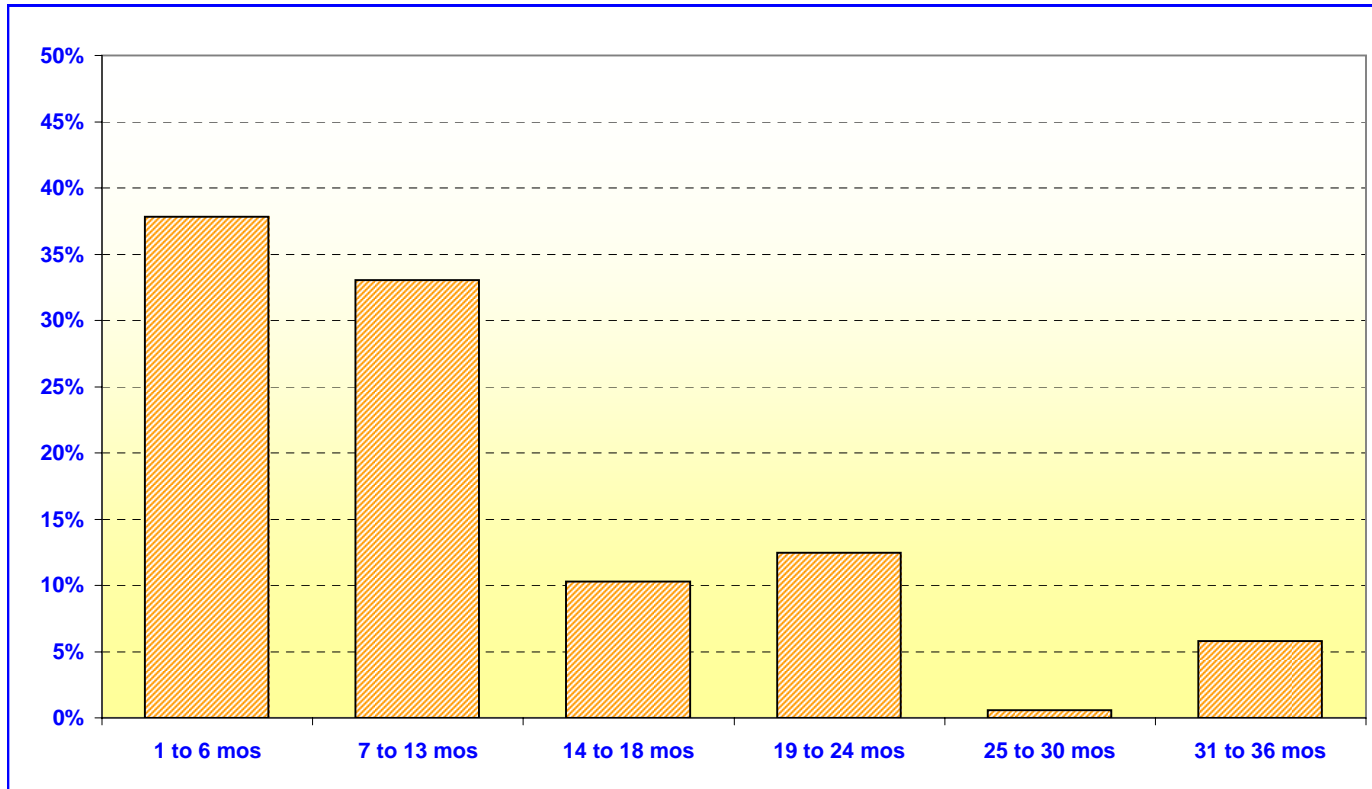
O.C. INVESTMENT POOL				
			In Thousands	%
Money Market Fund	1 TO 7 DAYS	\$	735,902	20.75%
Money Market Fund	8 TO 30 DAYS		591,760	16.68%
Money Market Fund	31 TO 60 DAYS		237,000	6.68%
Money Market Fund	61 TO 90 DAYS		139,700	3.94%
Money Market Fund	91 TO 180 DAYS		66,000	1.86%
Money Market Fund	181 TO 395 DAYS		50,000	1.41%
Extended Fund	1 TO 7 DAYS		51,481	1.45%
Extended Fund	8 TO 30 DAYS		181,650	5.12%
Extended Fund	31 TO 60 DAYS		125,000	3.52%
Extended Fund	61 TO 90 DAYS		0	0.00%
Extended Fund	91 TO 180 DAYS		295,000	8.32%
Extended Fund	181 TO 395 DAYS		570,932	16.10%
Extended Fund	14 TO 18 MONTHS		177,850	5.01%
Extended Fund	19 TO 24 MONTHS		215,000	6.06%
Extended Fund	25 TO 30 MONTHS		10,000	0.28%
Extended Fund	31 TO 36 MONTHS		100,000	2.82%
<b>TOTAL</b>			<b>\$ 3,547,275</b>	<b>100.00%</b>

O.C. EDUCATIONAL MONEY MARKET FUND		
	In Thousands	%
1 TO 7 DAYS	\$ 727,805	32.52%
8 TO 30 DAYS	854,750	38.19%
31 TO 60 DAYS	217,650	9.72%
61 TO 90 DAYS	263,000	11.75%
91 TO 180 DAYS	50,100	2.24%
181 TO 395 DAYS	124,853	5.58%
<b>TOTAL</b>		<b>\$ 2,238,158 100.00%</b>

**Maturity Limits Are In Compliance With The Orange County Treasurer's Investment Policy Statement**

Floating Rate Notes are deemed to have a maturity date equal to their next interest reset date.  
 At May 31, 2006 Floating Rate Notes comprise 11.05% and 6.66% of the O.C. Investment Pool and Educational Money Market Fund respectively.

**ORANGE COUNTY TREASURER - TAX COLLECTOR**  
**ORANGE COUNTY INVESTMENT POOL - EXTENDED FUND**  
**MATURITIES DISTRIBUTION**  
**May 31, 2006**



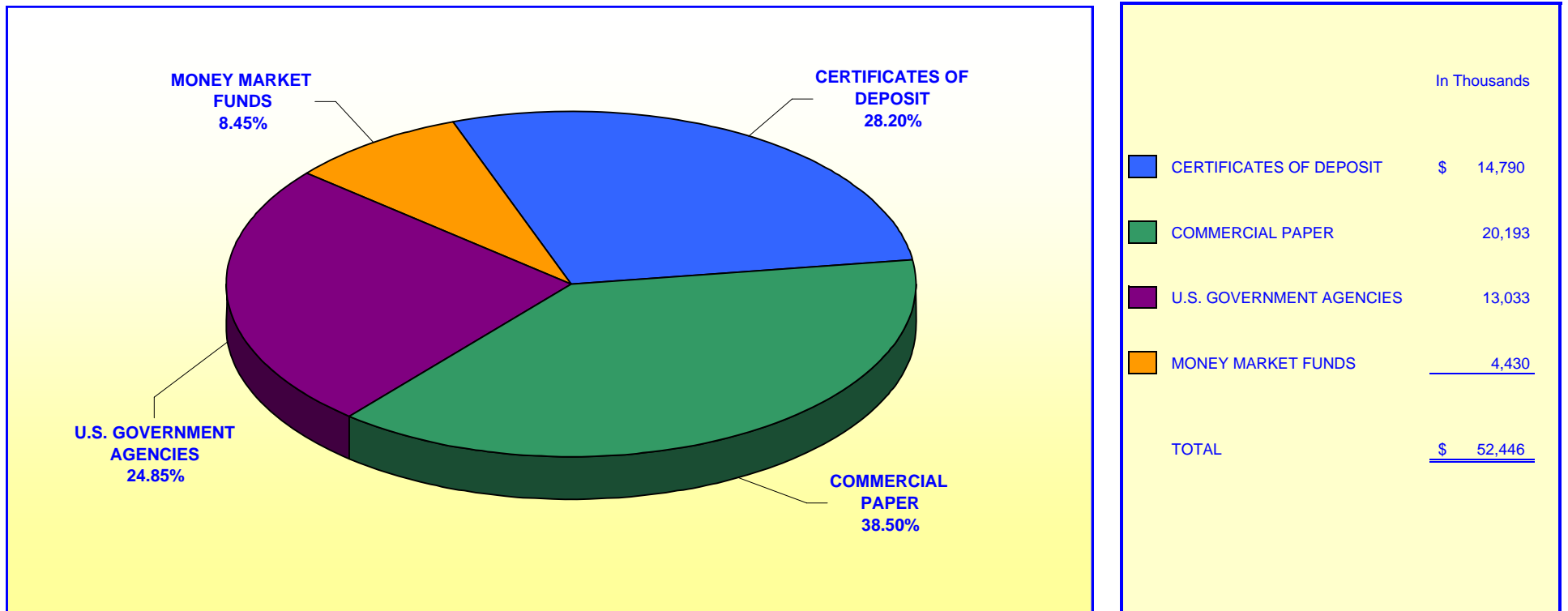
<b>O.C. INVESTMENT POOL EXTENDED FUND</b>		
	In Thousands	%
1 TO 6 MOS	\$ 653,131	37.82%
7 TO 13 MOS	570,932	33.06%
14 TO 18 MOS	177,850	10.30%
19 TO 24 MOS	215,000	12.45%
25 TO 30 MOS	10,000	0.58%
31 TO 36 MOS	<u>100,000</u>	<u>5.79%</u>
<b>TOTAL</b>	<b><u>\$ 1,726,913</u></b>	<b><u>100.00%</u></b>

***Maturity Limits Are In Compliance With The Orange County Treasurer's Investment Policy Statement***

Floating Rate Notes are deemed to have a maturity date equal to their next interest reset date.  
 At May 31, 2006, Floating Rate Notes comprise 9.55% of the O.C. Extended Fund.

**ORANGE COUNTY TREASURER - TAX COLLECTOR  
JOHN WAYNE AIRPORT INVESTMENT POOL  
PORTFOLIO COMPOSITION \*\***

**May 31, 2006**



***Investment Composition Is In Compliance With The Orange County Treasurer's Investment Policy Statement***

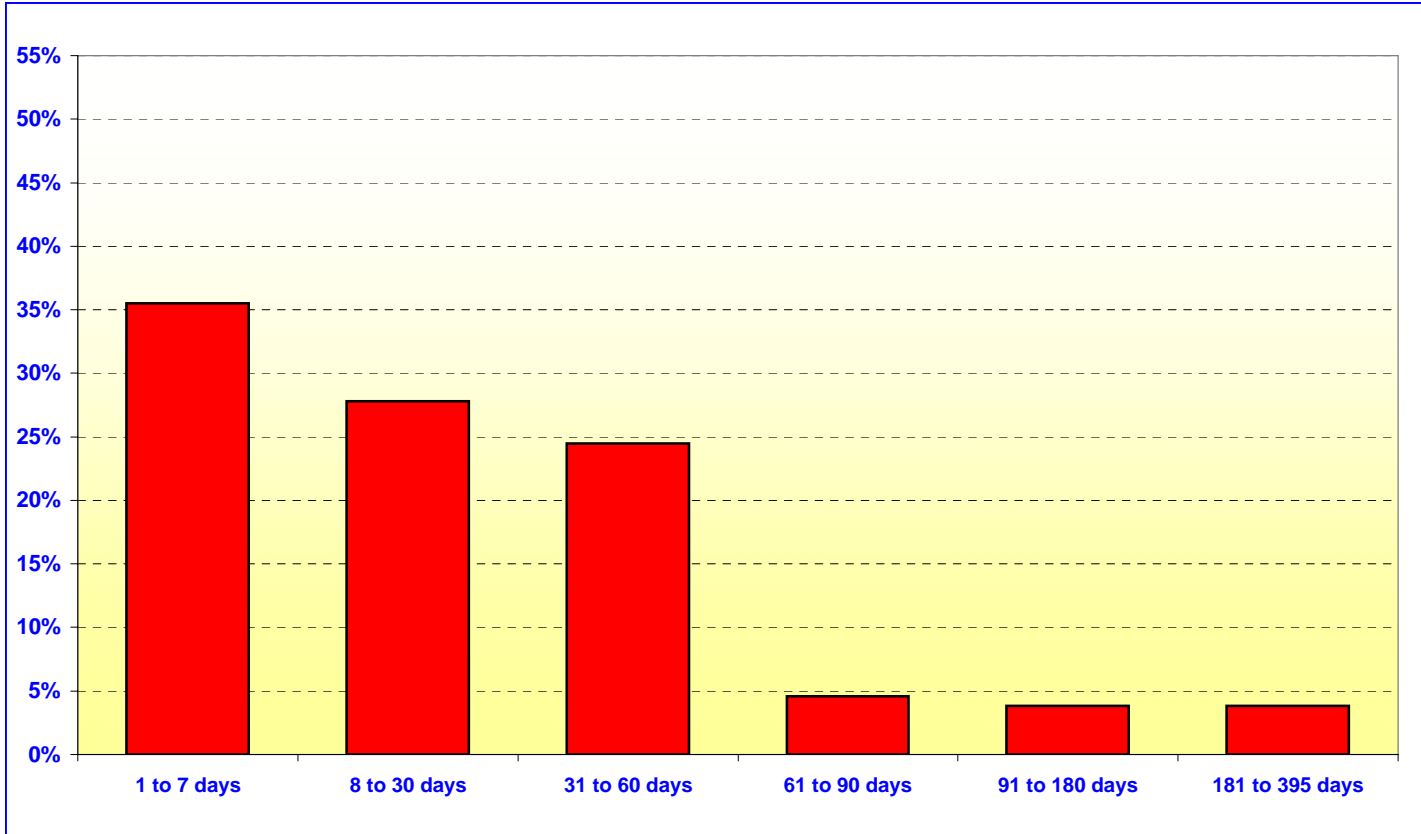
**\*\* Calculated Using Market Value at 05/31/06**

**ORANGE COUNTY TREASURER - TAX COLLECTOR**

**JOHN WAYNE AIRPORT INVESTMENT POOL**

**MATURITIES DISTRIBUTION**

May 31, 2006



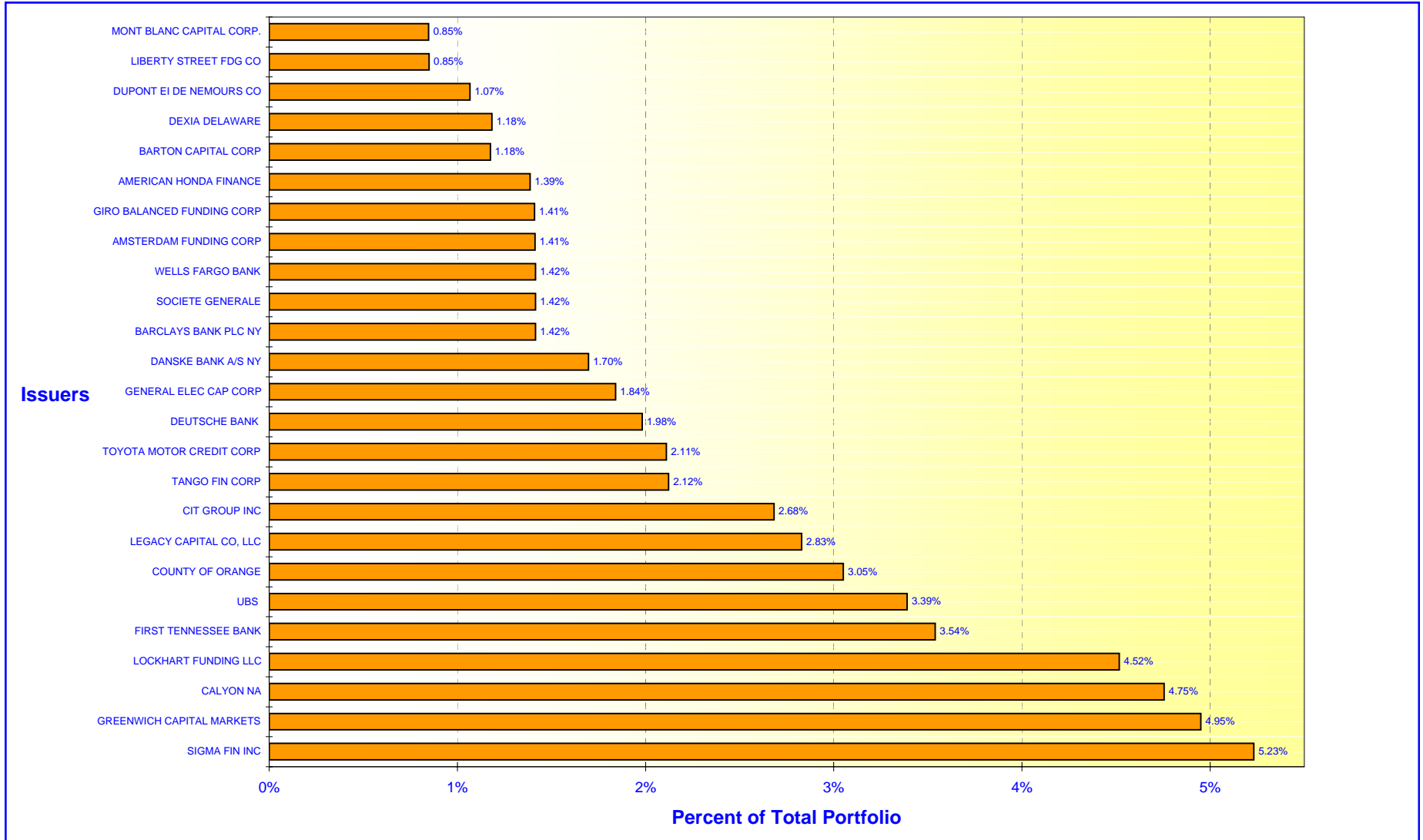
JOHN WAYNE AIRPORT		
	In Thousands	%
1 TO 7 DAYS	\$ 18,680	35.53%
8 TO 30 DAYS	14,625	27.82%
31 TO 60 DAYS	12,871	24.48%
61 TO 90 DAYS	2,400	4.57%
91 TO 180 DAYS	2,000	3.80%
181 TO 395 DAYS	<u>2,000</u>	<u>3.80%</u>
<b>TOTAL</b>	<b><u>\$ 52,576</u></b>	<b><u>100.00%</u></b>

*Maturity Limits Are In Compliance With The Orange County Treasurer's Investment Policy Statement*

# ORANGE COUNTY TREASURER - TAX COLLECTOR

## ORANGE COUNTY INVESTMENT POOL - ISSUER CONCENTRATION

May 31, 2006



**NOTE: See noncompliance report summary for issuers over 5%**



# ORANGE COUNTY TREASURER - TAX COLLECTOR

## EDUCATIONAL INVESTMENT POOL - ISSUER CONCENTRATION

May 31, 2006

