

ORANGE COUNTY TREASURY

LATEST THREE YEARS INVESTMENT POOL RESULTS with Benchmark Comparisons (1)

	MARKET VALUE (\$MM)				AVERAGE DAYS TO MATURITY				MONTHLY AVERAGE % YIELD (2)					12 MONTH AVG % YIELD (3)	
	CNTY MMF	SCHOOLS	X-FUND*	TOTAL	CNTY MMF	SCHOOLS	MMF AVG	X-FUND	CNTY MMF	SCHOOLS	MMF AVG	X-FUND	OCIP-NET	MMF AVG	OCIP-NET
February 2006	1,928.2	2,156.5	1,542.7	5,627.4	32	54	37	263	4.48	4.47	4.34	3.97	4.22	3.39	3.34
January 2006	1,730.8	2,229.8	1,667.6	5,628.2	28	38	38	267	4.33	4.30	4.18	3.52	3.97	3.21	3.18
December 2005	2,273.5	2,251.8	1,666.9	6,192.2	36	45	36	264	4.20	4.17	4.04	3.44	3.87	3.04	3.04
November 2005	1,764.2	1,795.3	1,616.2	5,175.7	36	55	35	280	3.96	3.97	3.84	3.46	3.69	2.86	2.89
October 2005	1,587.6	1,834.7	1,658.6	5,080.9	54	63	32	297	3.77	3.79	3.65	3.32	3.52	2.68	2.73
September 2005	1,511.9	1,967.5	1,585.5	5,064.9	52	61	36	304	3.63	3.61	3.46	3.11	3.35	2.51	2.58
August 2005	1,578.2	2,070.8	1,520.8	5,169.8	55	54	37	283	3.50	3.46	3.28	3.05	3.23	2.34	2.43
July 2005	1,704.8	2,097.4	1,508.3	5,310.4	55	53	37	301	3.30	3.28	3.10	3.03	3.10	2.17	2.28
June 2005	1,965.6	2,024.0	1,511.1	5,500.7	50	45	39	331	3.14	3.12	2.93	3.14	3.02	2.01	2.13
May 2005	2,037.6	2,265.2	1,461.3	5,764.1	50	45	34	334	3.03	3.02	2.81	2.93	2.89	1.84	1.98
April 2005	2,525.7	2,257.4	1,473.1	6,256.2	46	54	33	352	2.75	2.86	2.63	2.88	2.71	1.69	1.83
March 2005	2,180.9	1,927.0	1,458.4	5,566.3	44	58	39	361	2.54	2.69	2.41	2.50	2.47	1.54	1.69
February 2005	2,196.4	2,066.3	1,202.1	5,464.8	51	49	33	327	2.42	2.51	2.26	2.57	2.37	1.42	1.58
January 2005	2,075.4	2,116.0	1,204.1	5,395.5	40	47	35	346	2.23	2.38	2.08	2.36	2.21	1.31	1.48
December 2004	2,343.9	2,255.0	1,202.9	5,801.8	45	42	45	360	2.16	2.18	1.91	2.28	2.07	1.21	1.39
November 2004	2,124.0	1,712.0	1,140.0	4,976.0	56	46	45	383	1.95	1.94	1.70	2.19	1.88	1.13	1.31
October 2004	2,023.2	1,781.9	1,118.3	4,923.4	50	56	52	371	1.77	1.75	1.57	2.05	1.70	1.07	1.24
September 2004	1,911.8	1,944.3	1,036.9	4,893.0	53	55	57	359	1.60	1.58	1.43	2.09	1.57	1.02	1.20
August 2004	1,935.3	1,849.0	1,065.2	4,849.5	54	44	57	347	1.43	1.41	1.28	1.95	1.41	0.98	1.16
July 2004	1,924.3	1,766.4	1,063.1	4,753.8	55	50	53	382	1.29	1.26	1.14	1.82	1.27	0.95	1.13
June 2004	2,020.2	1,847.7	1,059.7	4,927.6	64	57	54	368	1.19	1.16	0.95	1.81	1.19	0.93	1.12
May 2004	2,055.2	2,163.3	1,021.3	5,239.8	81	66	54	402	1.14	1.14	0.92	1.73	1.13	0.95	1.12
April 2004	2,436.2	2,142.6	998.7	5,577.5	83	83	68	380	1.12	1.12	0.86	1.50	1.06	0.96	1.13
March 2004	2,172.5	2,060.2	833.2	5,065.9	68	73	69	408	1.12	1.13	0.93	1.77	1.11	0.99	1.15
February 2004	1,967.0	2,262.7	752.8	4,982.5	68	86	65	445	1.14	1.15	0.95	1.94	1.14	1.01	1.16
January 2004	2,166.8	2,241.7	701.6	5,110.1	52	74	69	454	1.12	1.11	0.95	2.27	1.15	1.03	1.19
December 2003	2,225.7	2,489.2	771.8	5,486.7	60	60	70	461	1.13	1.12	0.95	1.86	1.10	1.06	1.22
November 2003	2,157.2	1,763.1	677.5	4,597.8	61	68	72	448	1.13	1.11	0.94	1.74	1.09	1.10	1.26
October 2003	2,076.3	1,733.5	678.9	4,488.7	61	70	69	494	1.14	1.11	0.93	2.09	1.15	1.15	1.31
September 2003	1,899.1	1,931.8	706.1	4,537.0	68	68	68	473	1.17	1.12	0.93	1.56	1.08	1.21	1.38
August 2003	1,872.4	1,987.8	802.8	4,663.0	76	88	65	455	1.17	1.11	0.94	1.72	1.11	1.28	1.45
July 2003	1,938.4	1,998.4	730.6	4,667.4	66	63	69	476	1.21	1.15	0.96	1.75	1.14	1.35	1.51
June 2003	1,902.6	1,850.5	851.9	4,605.0	57	57	63	433	1.30	1.25	1.09	1.25	1.15	1.41	1.57
May 2003	2,069.8	2,185.4	574.2	4,829.4	56	48	58	363	1.33	1.30	1.15	2.13	1.29	1.47	1.64
April 2003	2,487.9	2,047.9	622.5	5,158.3	46	55	61	454	1.32	1.29	1.16	1.94	1.26	1.53	1.72
March 2003	1,976.9	2,024.5	573.7	4,575.1	59	61	55	513	1.38	1.31	1.18	1.96	1.30	1.59	1.79
February 2003	1,833.9	1,942.7	646.1	4,422.7	65	69	64	519	1.42	1.37	1.22	2.60	1.45	1.65	1.87
January 2003	1,881.8	1,781.1	716.7	4,379.6	65	53	61	521	1.45	1.43	1.27	2.45	1.48	1.71	1.94
December 2002	1,893.4	2,045.7	777.4	4,716.5	57	50	56	537	1.52	1.51	1.47	2.87	1.61	1.77	2.02
November 2002	1,680.0	1,465.7	777.8	3,923.5	57	54	60	529	1.70	1.67	1.50	2.59	1.74	1.83	2.11
October 2002	1,651.6	1,451.3	746.4	3,849.3	53	47	62	510	1.84	1.88	1.70	2.85	1.93	1.91	2.22
September 2002	1,550.7	1,654.5	696.0	3,901.2	47	52	61	532	1.89	1.92	1.72	3.00	1.97	2.03	2.33
August 2002	1,609.3	1,716.7	685.4	4,011.4	46	51	63	504	1.88	1.87	1.74	2.08	1.79	2.17	2.51
July 2002	1,646.9	1,741.9	729.0	4,117.8	47	58	62	487	1.89	1.87	1.77	2.81	1.92	2.33	2.71
June 2002	1,643.0	1,790.9	730.7	4,164.6	53	57	62	462	2.00	1.90	1.81	3.00	2.01	2.51	2.93
May 2002	1,627.8	1,684.1	730.4	4,042.3	64	70	62	504	2.02	1.96	1.82	3.53	2.14	2.70	3.16
April 2002	2,222.1	1,509.8	715.0	4,446.9	53	61	62	483	2.05	2.02	1.89	3.78	2.19	2.92	3.40
March 2002	1,614.1	1,453.2	734.0	3,801.3	51	60	59	497	2.11	2.04	1.90	3.48	2.22	3.18	3.67
February 2002	1,722.9	1,556.2	641.5	3,920.6	46	57	64	497	2.18	2.23	1.93	3.66	2.32	3.46	3.97
January 2002	1,873.2	1,498.9	660.3	4,032.4	51	60	63	515	2.33	2.32	2.01	3.85	2.45	3.78	4.29
December 2001	2,170.2	1,540.7	691.8	4,402.7	49	38	60	492	2.48	2.58	2.14	3.92	2.62	4.10	4.62
November 2001	1,811.0	1,116.0	600.6	3,527.6	72	54	61	537	2.84	3.09	2.45	4.53	3.08	4.46	4.95
October 2001	1,820.5	1,173.2	497.8	3,491.5	57	51	60	484	3.28	3.47	3.16	3.91	3.30	4.79	5.25

NOTES: (1) MMF AVERAGE - BENCHMARK COMPARISON FUNDS: Dreyfus Government Cash Management, Temporary Investment Fund, Fidelity Institutional Cash Management and Merrill Lynch Institutional Cash Management.

OCIP - NET is the dollar weighted average yield for the pools less the basis-point management fee.

(2) MONTHLY AVERAGE YIELD is the average earned income (OCIP-NET) for an investment in the Pool for a given month stated as an annual rate.

(3) LATEST 12 MONTHS AVERAGE YIELD is the average earned income (compounded monthly) for an investment in the Pool for the latest 12 months ending with a given month.

JOHN WAYNE AIRPORT PORTFOLIO

INVESTMENT PORTFOLIO RESULTS with Benchmark Comparisons (1)

	MARKET VALUE (000)	AVERAGE DAYS TO MATURITY			MONTHLY AVERAGE % YIELD (2)			
		JW AIRPORT	MMF AVG	S&P LGIP	JW AIRPORT	90 DAY T-BILL	MMF AVG	S&P LGIP
February 2006	51,364.6	45	37	33	4.43	4.54	4.34	4.20
January 2006	51,183.0	27	38	28	4.25	4.32	4.18	4.05
December 2005	50,996.9	32	36	30	4.10	3.97	4.04	3.92
November 2005	50,829.5	45	35	28	3.99	3.96	3.84	3.70
October 2005	50,708.0	58	32	27	3.84	3.76	3.65	3.47
September 2005	50,557.0	51	36	28	3.64	3.48	3.46	3.29
August 2005	50,435.0	49	37	30	3.51	3.50	3.28	3.11
July 2005	50,237.7	55	37	29	3.32	3.27	3.10	2.91
June 2005	50,098.0	34	39	27	3.10	3.02	2.93	2.76
May 2005	49,980.1	39	34	33	3.00	2.88	2.81	2.64
April 2005	48,856.3	44	33	36	2.87	2.82	2.63	2.43
March 2005	48,747.5	49	39	37	2.67	2.79	2.41	2.28
February 2005	49,635.8	53	33	38	2.52	2.58	2.26	2.12
January 2005	44,561.4	50	35	41	2.32	2.36	2.08	1.96
December 2004	44,489.7	32	45	42	2.13	2.22	1.91	1.77
November 2004	44,427.0	39	45	44	1.93	2.10	1.70	1.58
October 2004	44,344.5	40	52	45	1.78	1.78	1.57	1.44
September 2004	44,283.5	46	57	44	1.57	1.67	1.43	1.29
August 2004	44,223.1	38	57	45	1.39	1.49	1.28	1.14
July 2004	44,179.9	37	53	46	1.23	1.34	1.14	1.00
June 2004	44,132.8	46	54	45	1.11	1.26	0.95	0.86
May 2004	44,107.2	64	54	49	1.09	1.03	0.92	0.84
April 2004	44,075.8	75	68	50	1.08	0.84	0.86	0.84
March 2004	44,044.3	45	69	48	1.05	0.95	0.93	0.85
February 2004	44,004.8	51	65	49	1.06	0.93	0.95	0.85
January 2004	38,900.5	57	69	47	1.08	0.89	0.95	0.85
December 2003	38,881.0	48	70	48	1.08	0.90	0.95	0.85
November 2003	38,854.0	56	72	48	1.07	0.94	0.94	0.85
October 2003	38,837.3	61	69	47	1.08	0.93	0.93	0.83
September 2003	38,819.4	72	68	47	1.08	0.95	0.93	0.83
August 2003	38,789.7	60	65	47	1.10	0.96	0.94	0.83
July 2003	38,695.5	71	69	45	1.14	0.90	0.96	0.90
Jun 2003	38,677.3	67	63	39	1.12	0.93	1.09	1.01
May 2003	38,699.1	49	58	38	1.25	1.08	1.15	1.04
April 2003	38,656.0	50	61	36	1.23	1.14	1.16	1.07
March 2003	38,578.0	59	55	36	1.24	1.14	1.18	1.10
February 2003	38,580.0	53	64	37	1.29	1.18	1.22	1.13
January 2003	38,556.4	30	61	41	1.34	1.18	1.27	1.19
December 2002	38,514.6	27	56	45	1.42	1.20	1.47	1.27
November 2002	38,476.7	28	60	44	1.65	1.25	1.50	1.49
October 2002	38,431.9	28	62	43	1.78	1.60	1.70	1.58
September 2002	38,380.4	43	61	42	1.77	1.65	1.72	1.60
August 2002	38,331.6	37	63	45	1.80	1.64	1.74	1.63
July 2002	38,279.8	36	62	44	1.85	1.71	1.77	1.65
June 2002	38,226.0	48	62	44	1.86	1.72	1.81	1.66
May 2002	38,168.1	59	62	46	1.86	1.76	1.82	1.69
April 2002	38,108.7	31	62	45	1.85	1.74	1.89	1.70
March 2002	38,000.2	29	59	47	1.84	1.81	1.90	1.75
February 2002	37,958.1	34	64	46	1.85	1.75	1.93	1.85
January 2002	37,915.3	39	63	47	1.91	1.68	2.01	1.98
December 2001	37,894.9	22	60	46	2.49	1.72	2.14	2.13
November 2001	37,817.5	38	61	46	2.59	1.90	2.45	2.47
October 2001	37,746.8	39	60	45	2.88	2.20	3.16	3.16
September 2001	37,626.7	24	56	508	3.54	2.81	3.39	3.39
August 2001	37,517.2	29	61	527	3.82	3.44	3.71	3.71
July 2001	37,356.9	35	59	494	4.13	3.58	3.87	3.87
June 2001	37,108.6	22	63	501	4.40	3.55	4.11	4.11
May 2001*	36,919.5	25	63	485	4.73	3.69	4.47	4.47
April 2001*	40,829.9	27	55	496	5.15	3.96	4.99	4.99
March 2001	46,683.5	53	52	530	5.53	4.53	5.32	5.32
February 2001	46,322.5	50	45	29	6.06	5.01	5.73	5.63

* Airport withdrew \$2 million each on 4/25/01, 4/27/01, 4/30/01, 5/1/01 and 5/14/01

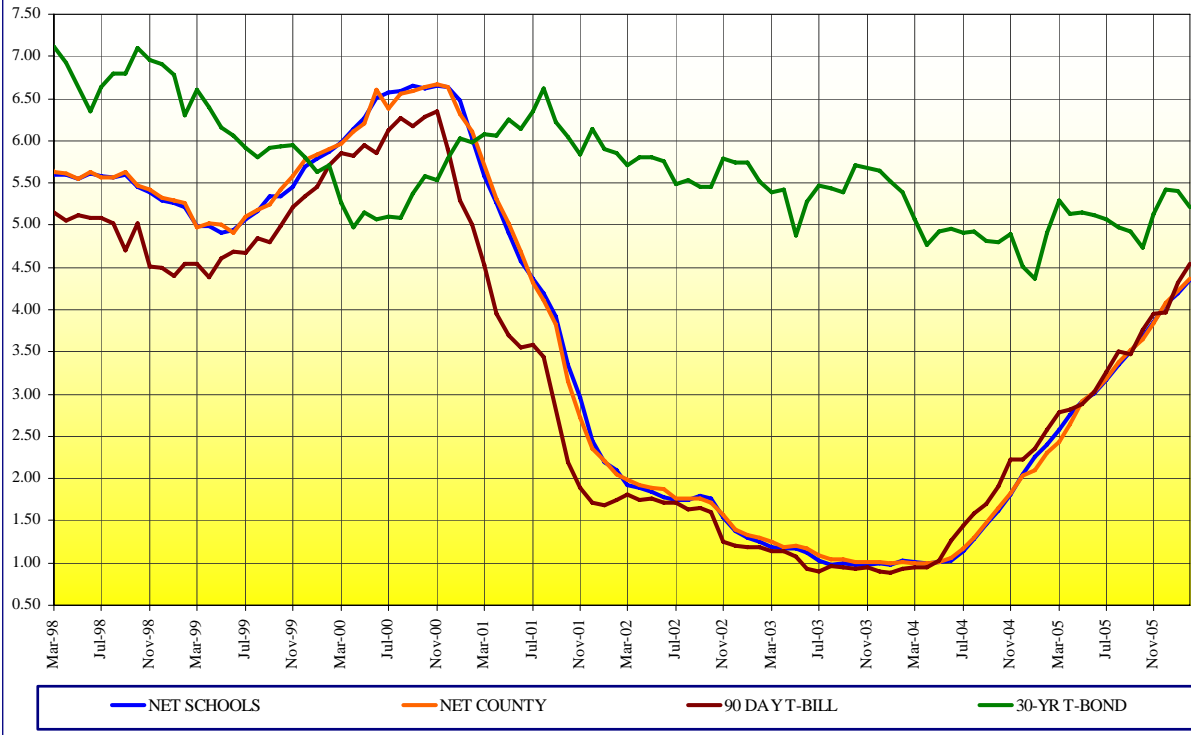
(1) MMF AVERAGE - BENCHMARK COMPARISON FUNDS:

- Dreyfus Government Cash Management
- Temporary Investment Fund
- Fidelity Institutional Cash Management
- Merrill Lynch Institutional Money Market

(2) MONTHLY AVERAGE YIELD is the average earned income for an investment in the Portfolio for a given month, stated as an annual rate.

ORANGE COUNTY MONEY MARKET POOLS vs BENCHMARKS (YIELD)

For The Period March 1998 to February 2006



ORANGE COUNTY MONEY MARKET POOLS vs BENCHMARKS (WAM)

For The Period January 2000 to February 2006

