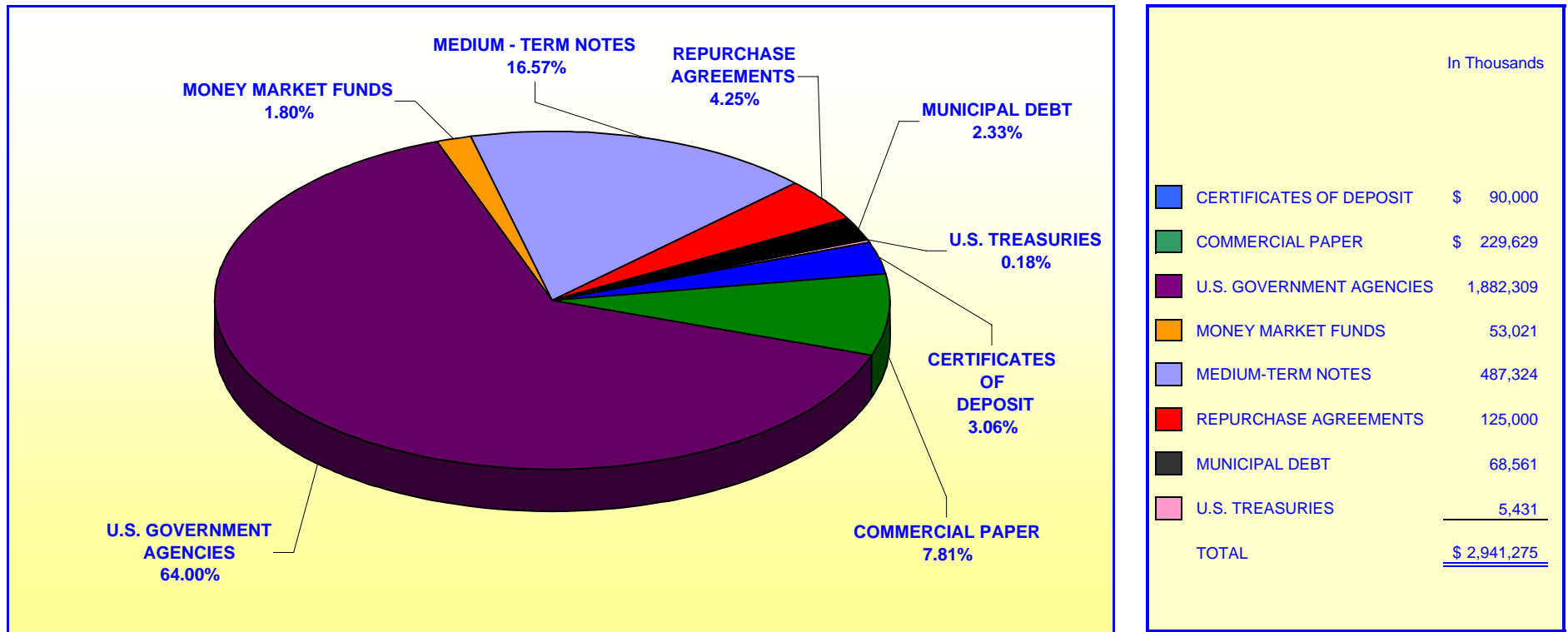


**ORANGE COUNTY TREASURER - TAX COLLECTOR
ORANGE COUNTY INVESTMENT POOL
PORTFOLIO COMPOSITION - COMBINED ****

August 31, 2008



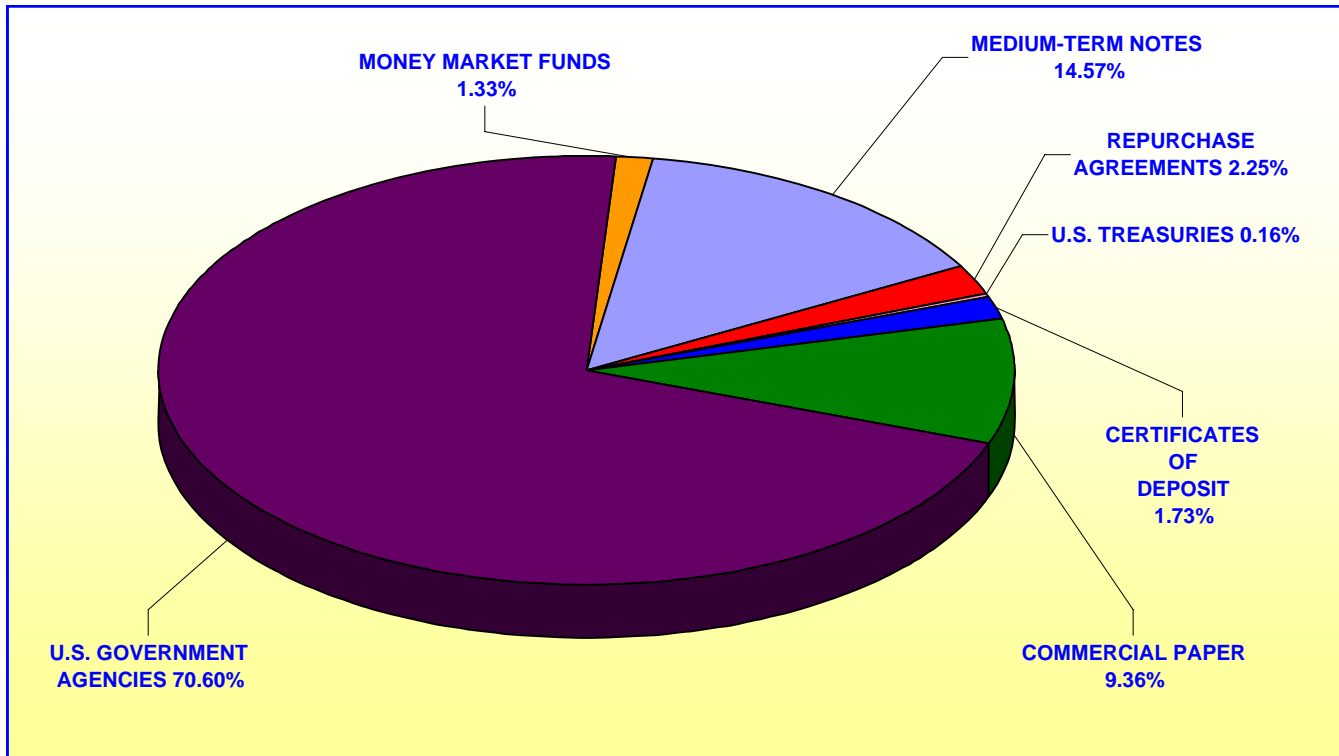
Investment Composition Is In Compliance With The Orange County Treasurer's Investment Policy Statement

**County Investment Pool Includes: Money Market Fund, Extended Fund, & Extended Fund B*

*** Calculated Using Market Value at 08/31/2008*

**ORANGE COUNTY TREASURER - TAX COLLECTOR
ORANGE COUNTY EDUCATIONAL INVESTMENT POOL
PORTFOLIO COMPOSITION - COMBINED ****

August 31, 2008



		In Thousands
CERTIFICATES OF DEPOSIT	\$	50,000
COMMERCIAL PAPER		269,903
U.S. GOVERNMENT AGENCIES		2,037,169
MONEY MARKET FUNDS		38,282
MEDIUM-TERM NOTES		420,389
REPURCHASE AGREEMENTS		65,000
MUNICIPAL DEBT		-
U.S. TREASURIES	\$	4,709
TOTAL	\$	<u><u>2,885,452</u></u>

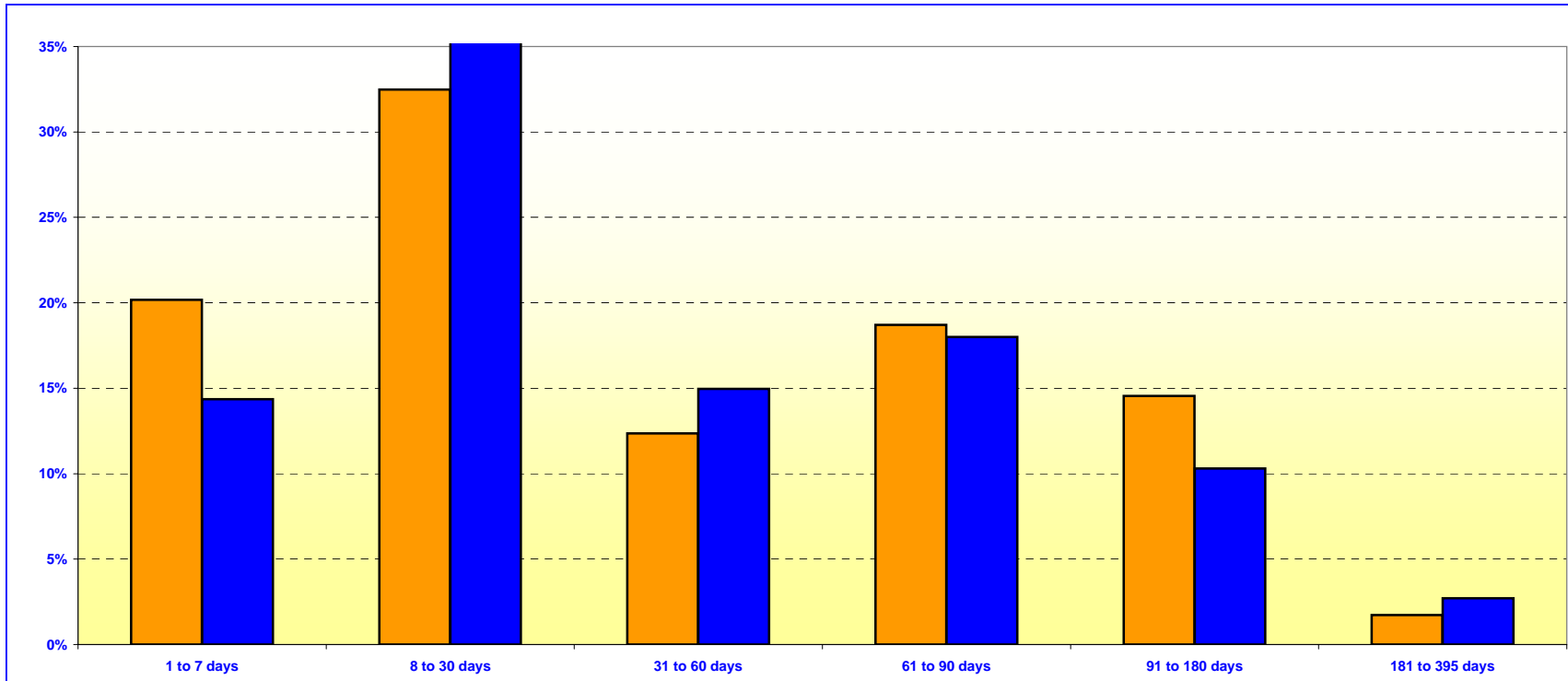
Investment Composition Is In Compliance With The Orange County Treasurer's Investment Policy Statement

*** Calculated Using Market Value at 08/31/2008*

ORANGE COUNTY TREASURER - TAX COLLECTOR
ORANGE COUNTY MONEY MARKET FUND AND EDUCATIONAL MONEY MARKET FUND

MATURITIES DISTRIBUTION

August 31, 2008



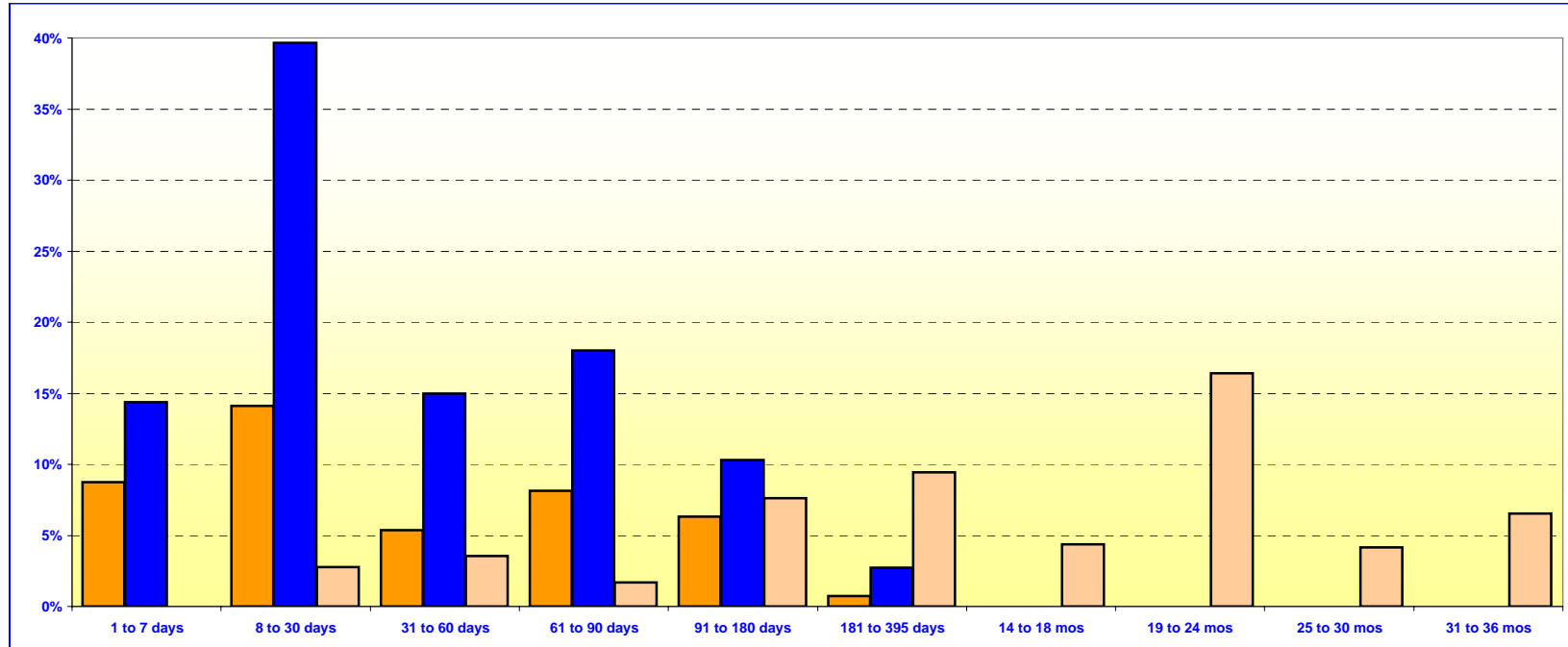
O.C. INVESTMENT POOL MONEY MARKET FUND			
	In Thousands		%
1 TO 7 DAYS	\$ 351,021		20.18%
8 TO 30 DAYS	565,033		32.48%
31 TO 60 DAYS	214,945		12.35%
61 TO 90 DAYS	325,560		18.71%
91 TO 180 DAYS	253,143		14.55%
181 TO 395 DAYS	30,100		1.73%
TOTAL	\$ 1,739,802		99.99%

O.C. EDUCATIONAL MONEY MARKET FUND			
	In Thousands		%
1 TO 7 DAYS	\$ 264,880		14.36%
8 TO 30 DAYS	731,610		39.66%
31 TO 60 DAYS	276,101		14.97%
61 TO 90 DAYS	332,000		18.00%
91 TO 180 DAYS	190,000		10.30%
181 TO 395 DAYS	50,000		2.71%
TOTAL	\$ 1,844,591		100.00%

Maturity Limits Are In Compliance With The Orange County Treasurer's Investment Policy Statement

Floating Rate Notes are deemed to have a maturity date equal to their next interest reset date.
 At August 31, 2008 Floating Rate Notes comprise 17.74% and 9.64% of the O.C. Money Market Fund and Educational Money Market Fund respectively.

ORANGE COUNTY TREASURER - TAX COLLECTOR
ORANGE COUNTY AND EDUCATIONAL INVESTMENT POOLS
MATURITIES DISTRIBUTION
August 31, 2008



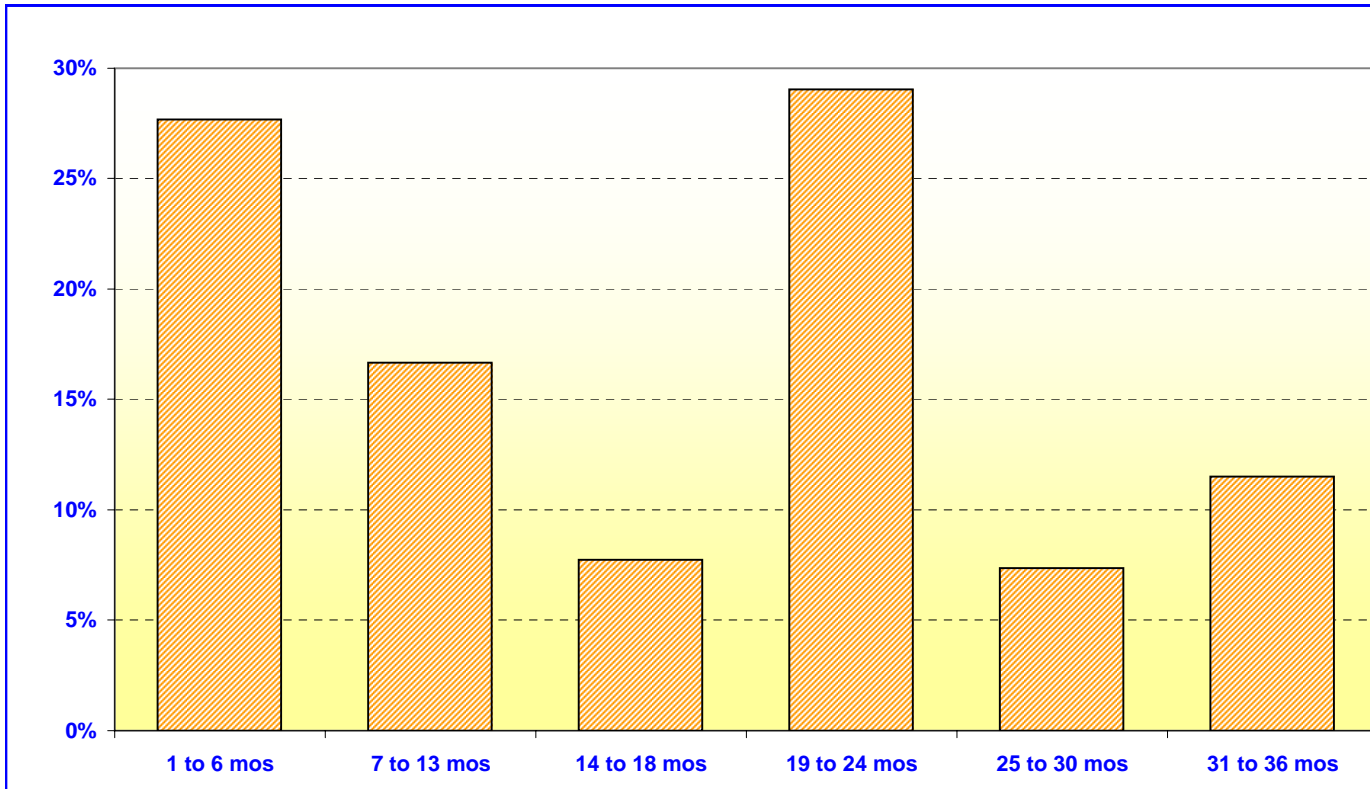
O.C. INVESTMENT POOL (includes MMF, Extended Fund, & Extended Fund B)				
			In Thousands	%
Money Market Fund	1 TO 7 DAYS	\$	351,021	8.76%
Money Market Fund	8 TO 30 DAYS		565,033	14.11%
Money Market Fund	31 TO 60 DAYS		214,945	5.37%
Money Market Fund	61 TO 90 DAYS		325,560	8.13%
Money Market Fund	91 TO 180 DAYS		253,143	6.32%
Money Market Fund	181 TO 395 DAYS		30,100	0.75%
Extended Fund	1 TO 7 DAYS		-	0.00%
Extended Fund	8 TO 30 DAYS		111,500	2.78%
Extended Fund	31 TO 60 DAYS		142,898	3.57%
Extended Fund	61 TO 90 DAYS		67,300	1.68%
Extended Fund	91 TO 180 DAYS		305,000	7.62%
Extended Fund	181 TO 395 DAYS		377,596	9.43%
Extended Fund	14 TO 18 MONTHS		175,000	4.37%
Extended Fund	19 TO 24 MONTHS		657,795	16.42%
Extended Fund	25 TO 30 MONTHS		167,025	4.17%
Extended Fund	31 TO 36 MONTHS		260,949	6.52%
TOTAL			<u>\$ 4,004,865</u>	<u>100.00%</u>

O.C. EDUCATIONAL MONEY MARKET FUND		
	In Thousands	%
1 TO 7 DAYS	\$ 264,880	14.36%
8 TO 30 DAYS	731,610	39.66%
31 TO 60 DAYS	276,101	14.97%
61 TO 90 DAYS	332,000	18.00%
91 TO 180 DAYS	190,000	10.30%
181 TO 395 DAYS	50,000	2.71%
TOTAL		<u>\$ 1,844,591</u> <u>100.00%</u>

Maturity Limits Are In Compliance With The Orange County Treasurer's Investment Policy Statement

Floating Rate Notes are deemed to have a maturity date equal to their next interest reset date.
 At August 31, 2008, Floating Rate Notes comprise 16.78% and 9.64% of the O.C. Investment Pool and Educational Money Market Fund respectively.

ORANGE COUNTY TREASURER - TAX COLLECTOR
ORANGE COUNTY INVESTMENT POOL - EXTENDED FUND
MATURITIES DISTRIBUTION
August 31, 2008



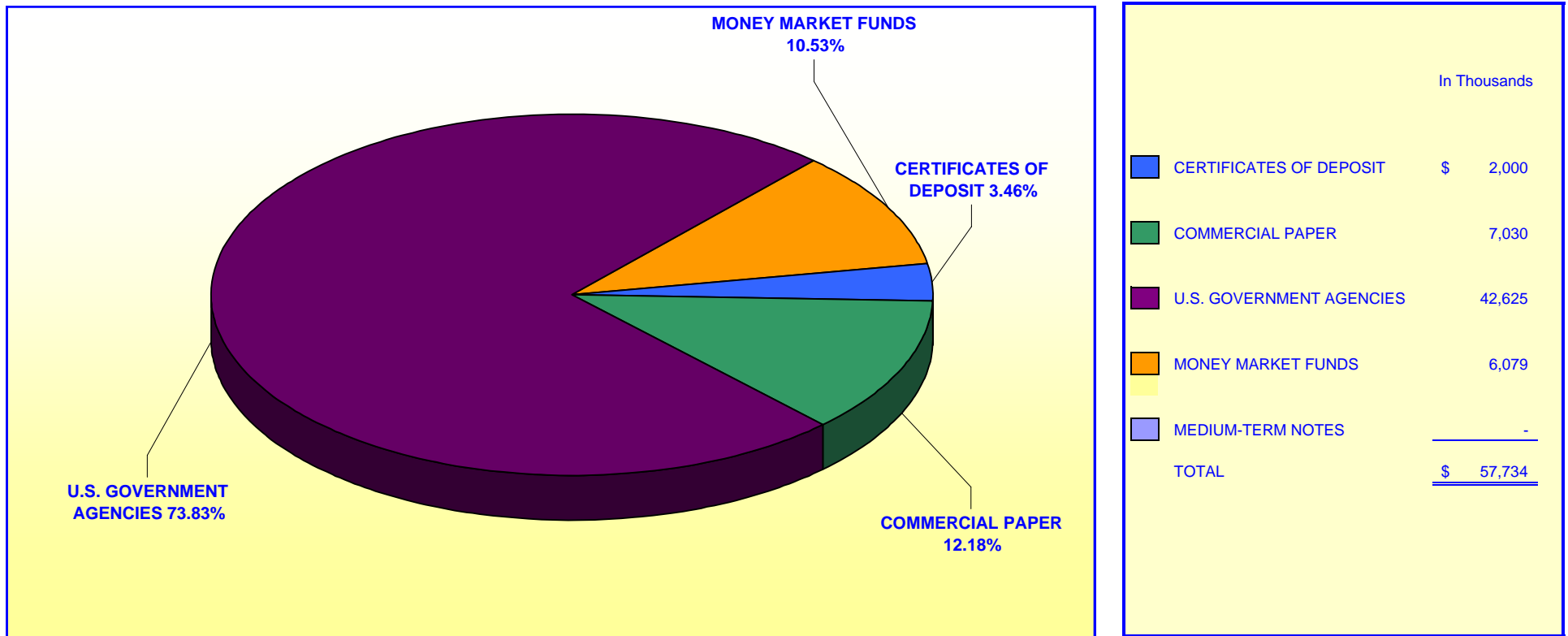
O.C. INVESTMENT POOL EXTENDED FUND (includes Extended Fund B)		
	In Thousands	%
1 TO 6 MOS	\$ 626,698	27.67%
7 TO 13 MOS	377,596	16.67%
14 TO 18 MOS	175,000	7.73%
19 TO 24 MOS	657,795	29.04%
25 TO 30 MOS	167,025	7.37%
31 TO 36 MOS	<u>260,949</u>	<u>11.52%</u>
TOTAL	<u>\$ 2,265,063</u>	<u>100.00%</u>

Maturity Limits Are In Compliance With The Orange County Treasurer's Investment Policy Statement

Floating Rate Notes are deemed to have a maturity date equal to their next interest reset date.
 At August 31, 2008, Floating Rate Notes comprise 16.05% of the O.C. Extended Fund.

**ORANGE COUNTY TREASURER - TAX COLLECTOR
JOHN WAYNE AIRPORT INVESTMENT POOL
PORTFOLIO COMPOSITION ****

August 31, 2008



Investment Composition Is In Compliance With The Orange County Treasurer's Investment Policy Statement

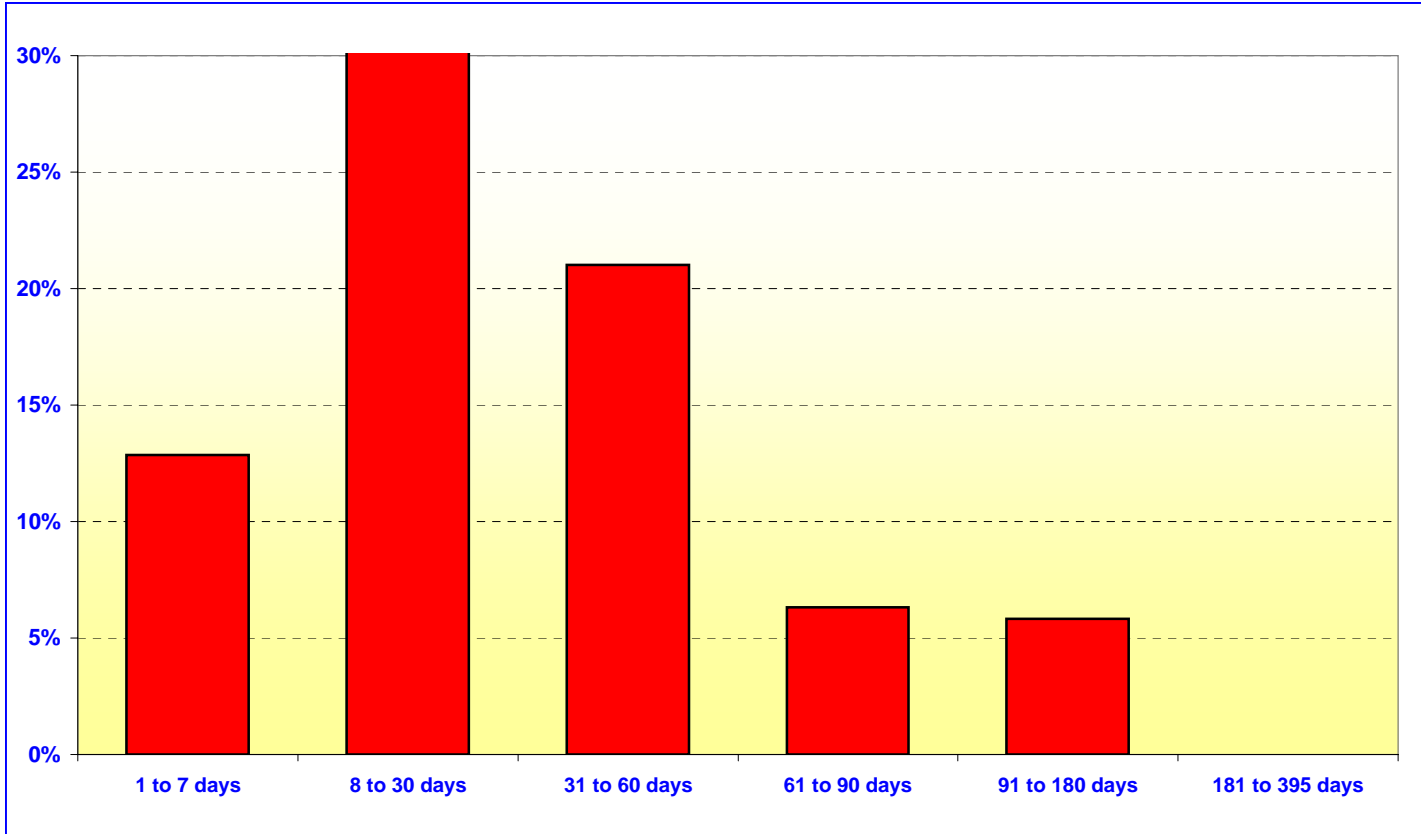
*** Calculated Using Market Value at 08/31/2008*

ORANGE COUNTY TREASURER - TAX COLLECTOR

JOHN WAYNE AIRPORT INVESTMENT POOL

MATURITIES DISTRIBUTION

August 31, 2008



JOHN WAYNE AIRPORT		
	In Thousands	%
1 TO 7 DAYS	\$ 7,434	12.85%
8 TO 30 DAYS	31,230	53.97%
31 TO 60 DAYS	12,160	21.02%
61 TO 90 DAYS	3,663	6.33%
91 TO 180 DAYS	3,374	5.83%
181 TO 395 DAYS	-	0.00%
TOTAL	\$ 57,861	100.00%

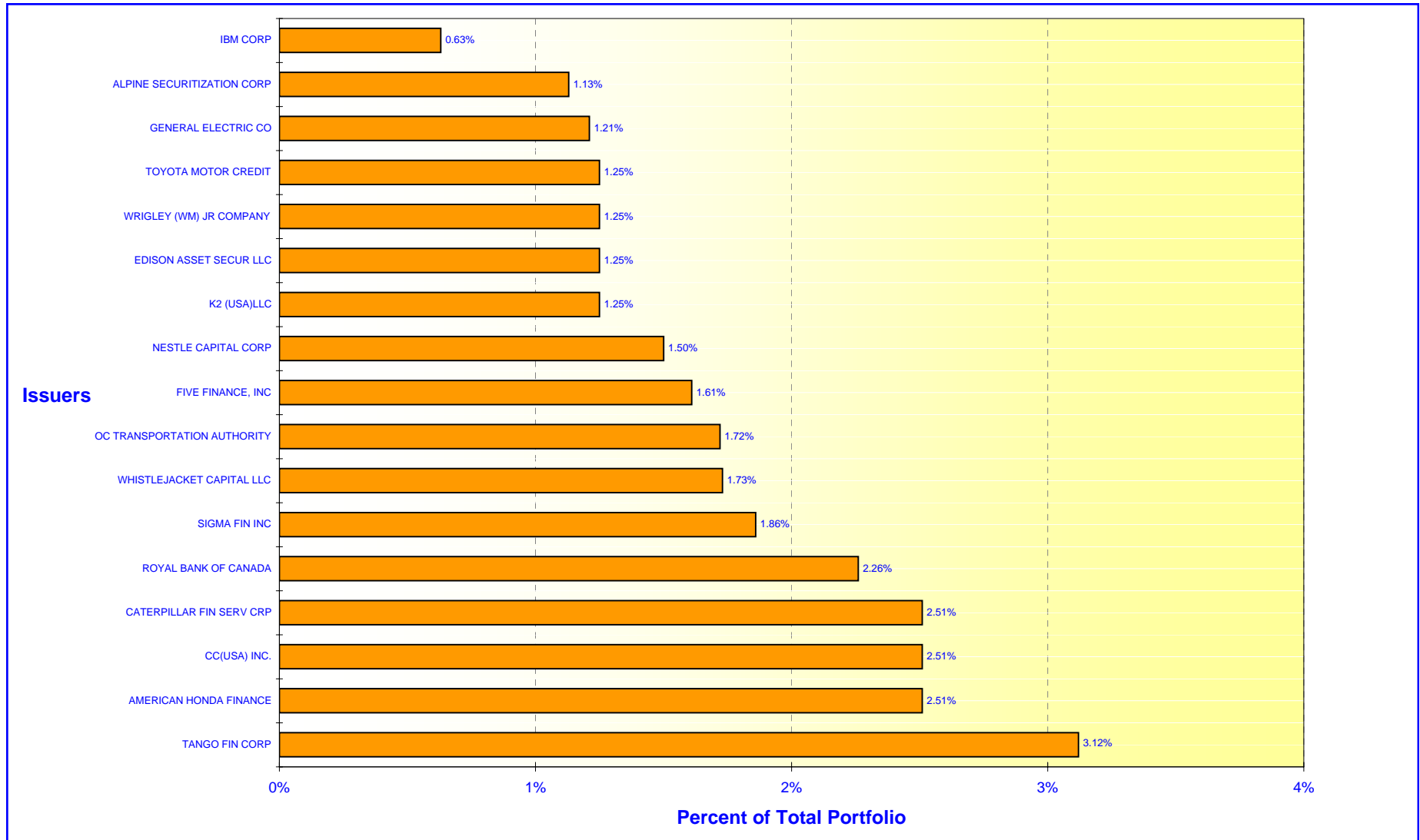
Maturity Limits Are In Compliance With The Orange County Treasurer's Investment Policy Statement

Floating Rate Notes are deemed to have a maturity date equal to their next interest reset date.
 At August 31, 2008, Floating Rate Notes comprise 3.46% John Wayne Airport

ORANGE COUNTY TREASURER - TAX COLLECTOR

ORANGE COUNTY INVESTMENT POOL - ISSUER CONCENTRATION

August 31, 2008



Note: Commingled Investment Pool includes: Money Market Fund, Extended Fund, & Extended Fund B

ORANGE COUNTY TREASURER - TAX COLLECTOR

EDUCATIONAL INVESTMENT POOL - ISSUER CONCENTRATION

August 31, 2008

