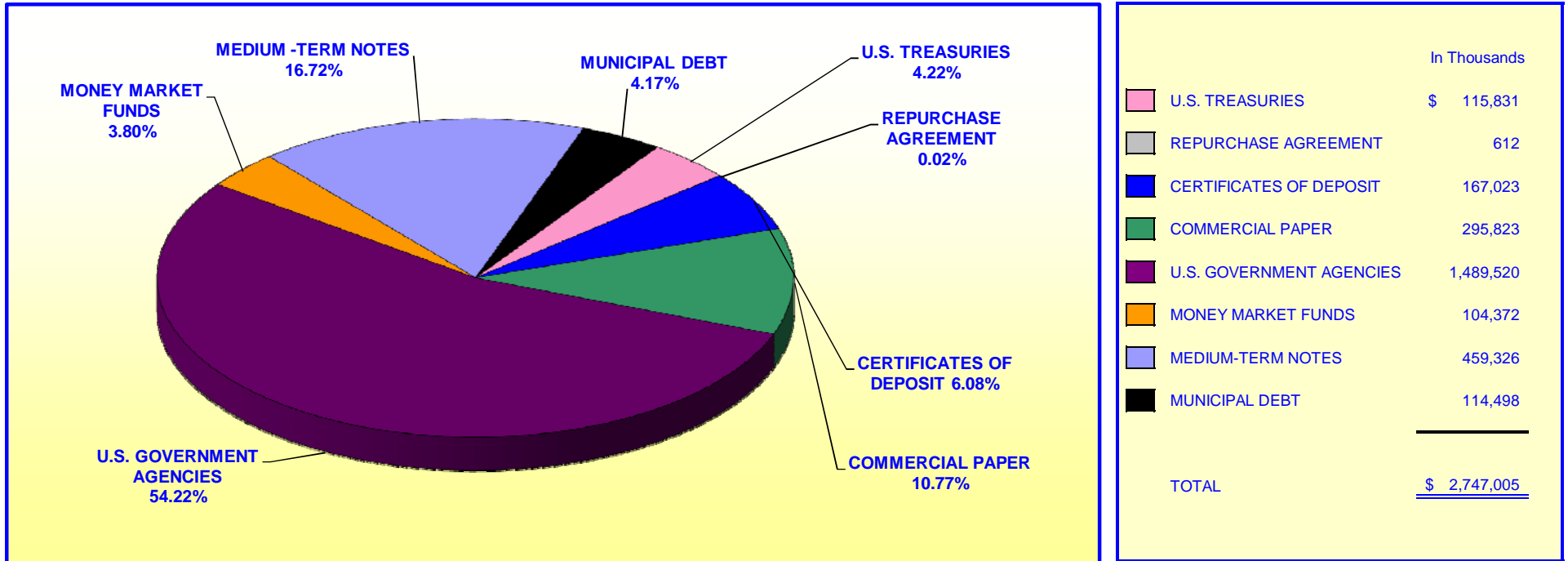


**ORANGE COUNTY TREASURER - TAX COLLECTOR  
ORANGE COUNTY EDUCATIONAL INVESTMENT POOL  
PORTFOLIO COMPOSITION - COMBINED \*\***

**October 31, 2010**



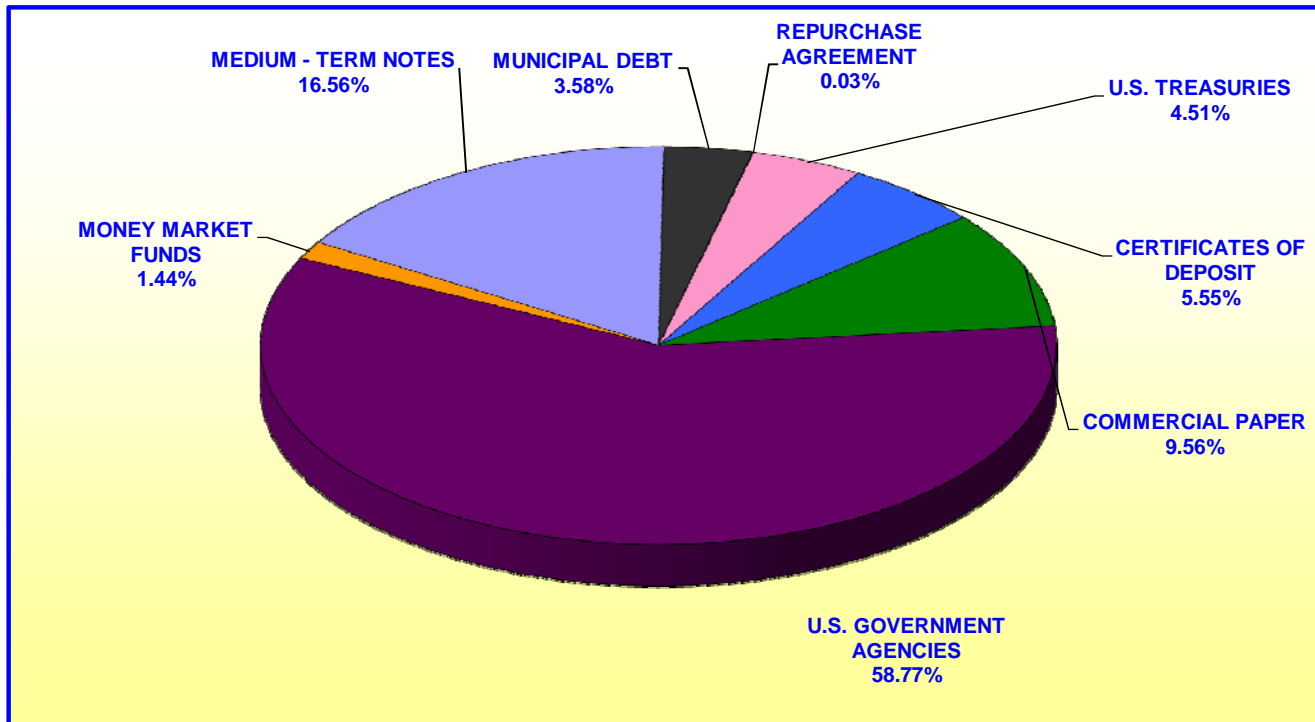
**Investment Composition Is In Compliance With The Orange County Treasurer's Investment Policy Statement**

**\*Educational Investment Pool Includes: Money Market Fund & Extended Fund**

**\*\* Calculated Using Market Value at 10/31/2010**

**ORANGE COUNTY TREASURER - TAX COLLECTOR  
ORANGE COUNTY INVESTMENT POOL  
PORTFOLIO COMPOSITION - COMBINED \*\***

**October 31, 2010**



	In Thousands
U.S. TREASURIES	\$ 140,665
REPURCHASE AGREEMENT	794
CERTIFICATES OF DEPOSIT	172,958
COMMERCIAL PAPER	297,893
U.S. GOVERNMENT AGENCIES	1,831,305
MONEY MARKET FUNDS	44,758
MEDIUM-TERM NOTES	516,045
MUNICIPAL DEBT	111,618
<b>TOTAL</b>	<b><u>\$ 3,116,036</u></b>

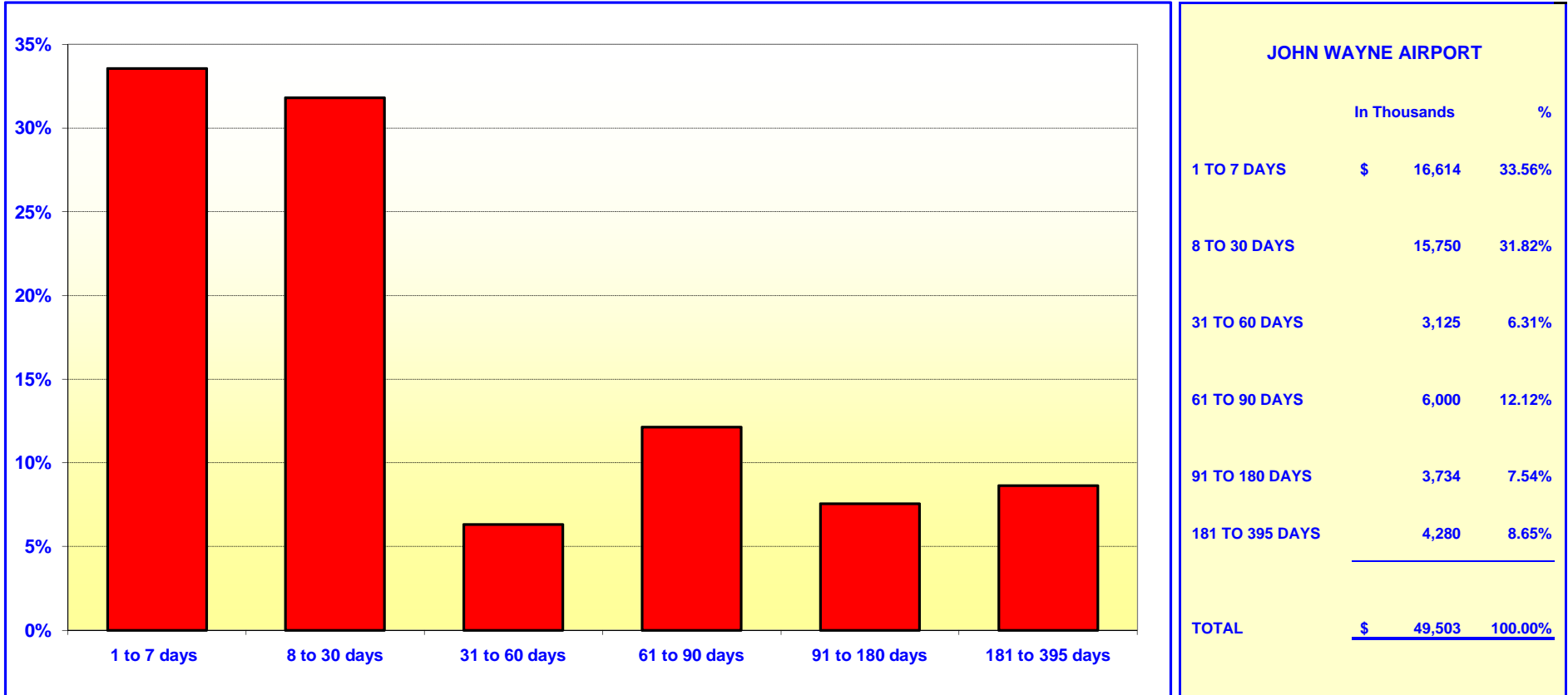
*Investment Composition Is In Compliance With The Orange County Treasurer's Investment Policy Statement*

*\*County Investment Pool Includes: Money Market Fund & Extended Fund*

*\*\* Calculated Using Market Value at 10/31/2010*

**ORANGE COUNTY TREASURER - TAX COLLECTOR**  
**JOHN WAYNE AIRPORT INVESTMENT POOL**  
**MATURITIES DISTRIBUTION**

October 31, 2010

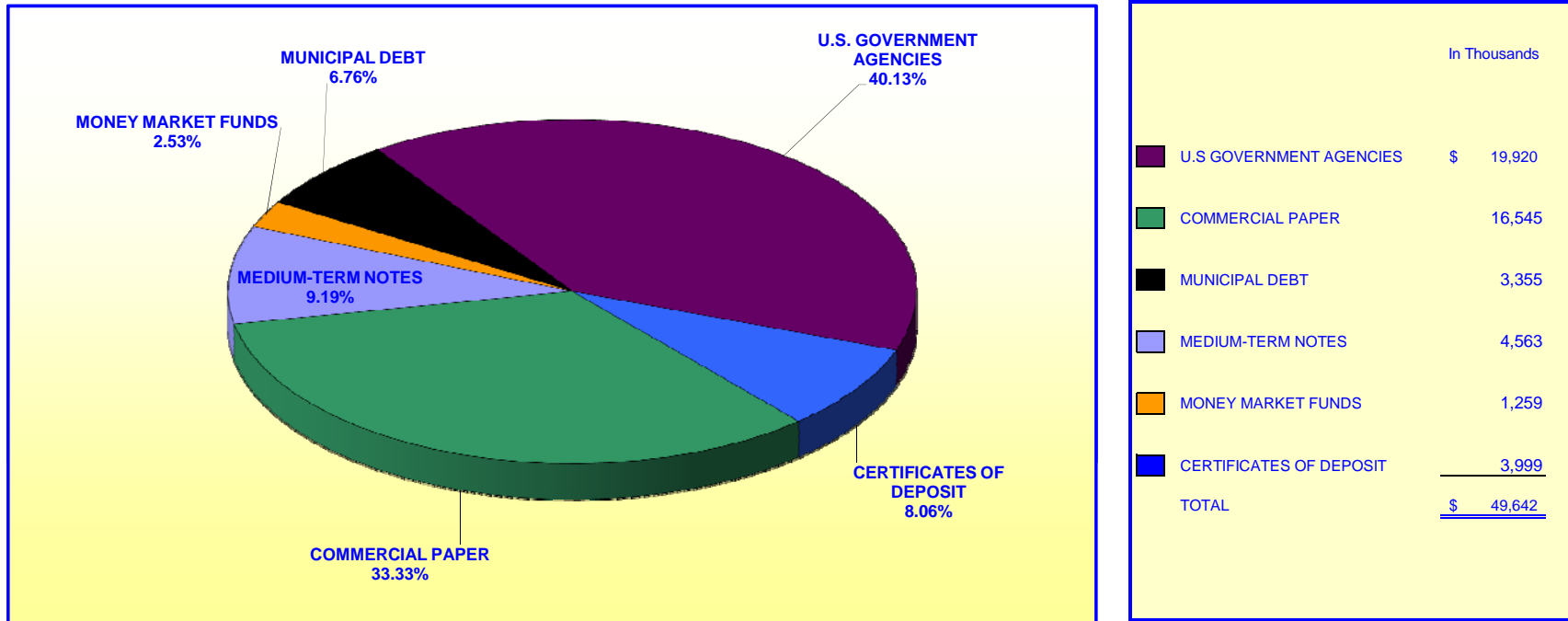


*Maturity Limits Are In Compliance With The Orange County Treasurer's Investment Policy Statement*

Floating Rate Notes are deemed to have a maturity date equal to their next interest reset date.  
 At 10/31/2010, Floating Rate Notes comprise 37.08% of the John Wayne Airport

**ORANGE COUNTY TREASURER - TAX COLLECTOR  
JOHN WAYNE AIRPORT INVESTMENT POOL  
PORTFOLIO COMPOSITION \*\***

October 31, 2010



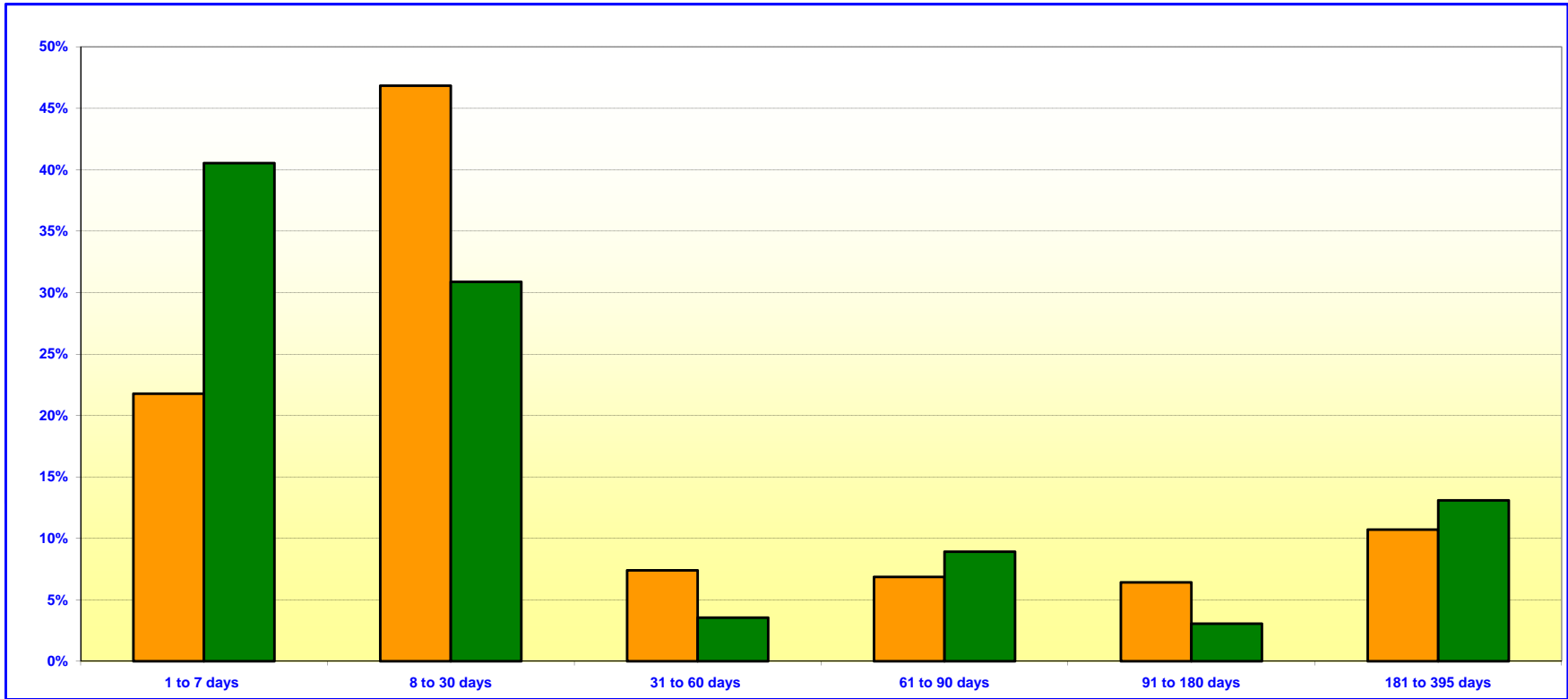
*Investment Composition Is In Compliance With The Orange County Treasurer's Investment Policy Statement*

*\*\* Calculated Using Market Value at 10/31/2010*

**ORANGE COUNTY TREASURER - TAX COLLECTOR**  
**ORANGE COUNTY MONEY MARKET FUND AND EDUCATIONAL MONEY MARKET FUND**

**MATURITIES DISTRIBUTION**

October 31, 2010



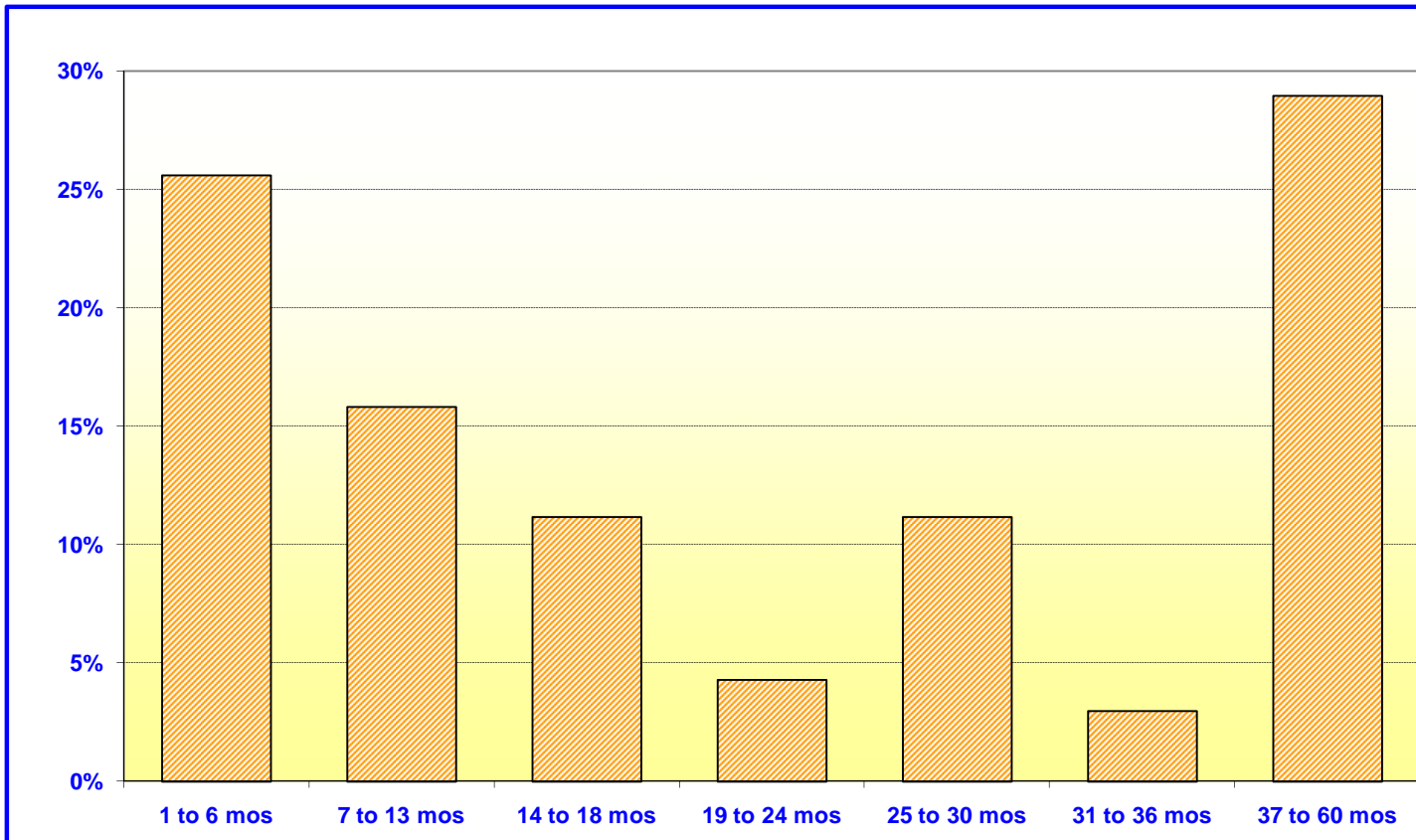
<b>O.C. INVESTMENT POOL MONEY MARKET FUND</b>		
	In Thousands	%
1 TO 7 DAYS	\$ 302,452	21.77%
8 TO 30 DAYS	650,767	46.84%
31 TO 60 DAYS	102,822	7.40%
61 TO 90 DAYS	95,100	6.85%
91 TO 180 DAYS	89,155	6.42%
181 TO 395 DAYS	149,000	10.72%
<b>TOTAL</b>	<b>\$ 1,389,296</b>	<b>100.00%</b>

<b>O.C. EDUCATIONAL MONEY MARKET FUND</b>		
	In Thousands	%
1 TO 7 DAYS	\$ 562,004	40.53%
8 TO 30 DAYS	428,168	30.88%
31 TO 60 DAYS	49,034	3.54%
61 TO 90 DAYS	123,656	8.92%
91 TO 180 DAYS	42,212	3.04%
181 TO 395 DAYS	181,566	13.09%
<b>TOTAL</b>	<b>\$ 1,386,640</b>	<b>100.00%</b>

***Maturity Limits Are In Compliance With The Orange County Treasurer's Investment Policy Statement***

Floating Rate Notes are deemed to have a maturity date equal to their next interest reset date.  
 At 10/31/2010 Floating Rate Notes comprise 39.88% and 48.18% of the O.C. Money Market Fund and Educational Money Market Fund respectively.

**ORANGE COUNTY TREASURER - TAX COLLECTOR**  
**ORANGE COUNTY - EXTENDED FUND**  
**MATURITIES DISTRIBUTION**  
 October 31, 2010

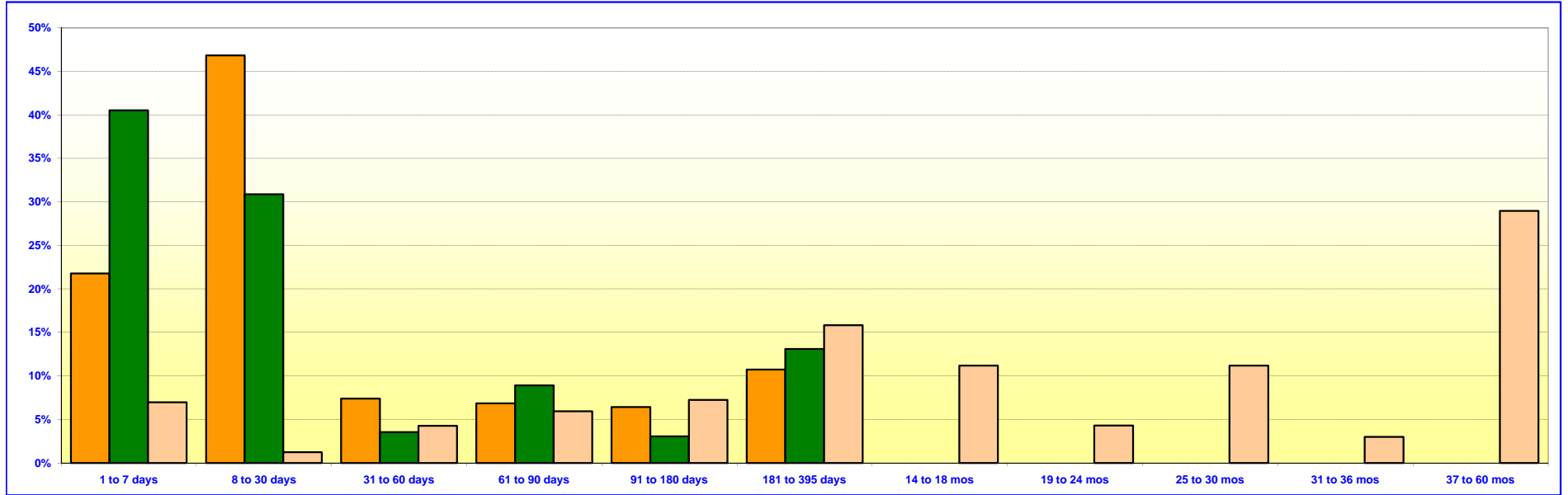


<b>ORANGE COUNTY EXTENDED FUND</b> (includes Extended Fund B)		
	In Thousands	%
1 TO 6 MOS	\$ 778,760	25.60%
7 TO 13 MOS	481,670	15.83%
14 TO 18 MOS	339,868	11.17%
19 TO 24 MOS	130,173	4.28%
25 TO 30 MOS	340,122	11.18%
31 TO 36 MOS	90,830	2.99%
37 TO 60 MOS	<u>880,834</u>	<u>28.95%</u>
<b>TOTAL</b>	<b><u>\$ 3,042,257</u></b>	<b><u>100.00%</u></b>

***Maturity Limits Are In Compliance With The Orange County Treasurer's Investment Policy Statement***

Floating Rate Notes are deemed to have a maturity date equal to their next interest reset date.  
 At 10/31/2010, Floating Rate Notes comprise 7.67% of the O.C. Extended Fund

**ORANGE COUNTY TREASURER - TAX COLLECTOR  
ORANGE COUNTY AND EDUCATIONAL INVESTMENT POOLS  
MATURITIES DISTRIBUTION  
October 31, 2010**



O.C. INVESTMENT POOL MONEY MARKET FUND		
	In Thousands	%
1 TO 7 DAYS	\$ 302,452	21.77%
8 TO 30 DAYS	650,767	46.84%
31 TO 60 DAYS	102,822	7.40%
61 TO 90 DAYS	95,100	6.85%
91 TO 180 DAYS	89,155	6.42%
181 TO 395 DAYS	149,000	10.72%
<b>TOTAL</b>	<b>\$ 1,389,296</b>	<b>100.00%</b>

O.C. EDUCATIONAL MONEY MARKET FUND		
	In Thousands	%
1 TO 7 DAYS	\$ 562,004	40.53%
8 TO 30 DAYS	428,168	30.88%
31 TO 60 DAYS	49,034	3.54%
61 TO 90 DAYS	123,656	8.92%
91 TO 180 DAYS	42,212	3.04%
181 TO 395 DAYS	181,566	13.09%
<b>TOTAL</b>	<b>\$ 1,386,640</b>	<b>100%</b>

O.C. INVESTMENT POOL EXTENDED FUND		
	In Thousands	%
1 TO 7 DAYS	\$ 211,685	6.96%
8 TO 30 DAYS	37,500	1.23%
31 TO 60 DAYS	129,700	4.26%
61 TO 90 DAYS	180,017	5.92%
91 TO 180 DAYS	219,858	7.23%
181 TO 395 DAYS	481,670	15.83%
14 TO 18 MONTHS	339,868	11.17%
19 TO 24 MONTHS	130,173	4.28%
25 TO 30 MONTHS	340,122	11.18%
31 TO 36 MONTHS	90,830	2.99%
37 TO 60 MONTHS	880,834	28.95%
<b>TOTAL</b>	<b>\$ 3,042,257</b>	<b>100.00%</b>

*Maturity Limits Are In Compliance With The Orange County Treasurer's Investment Policy Statement*

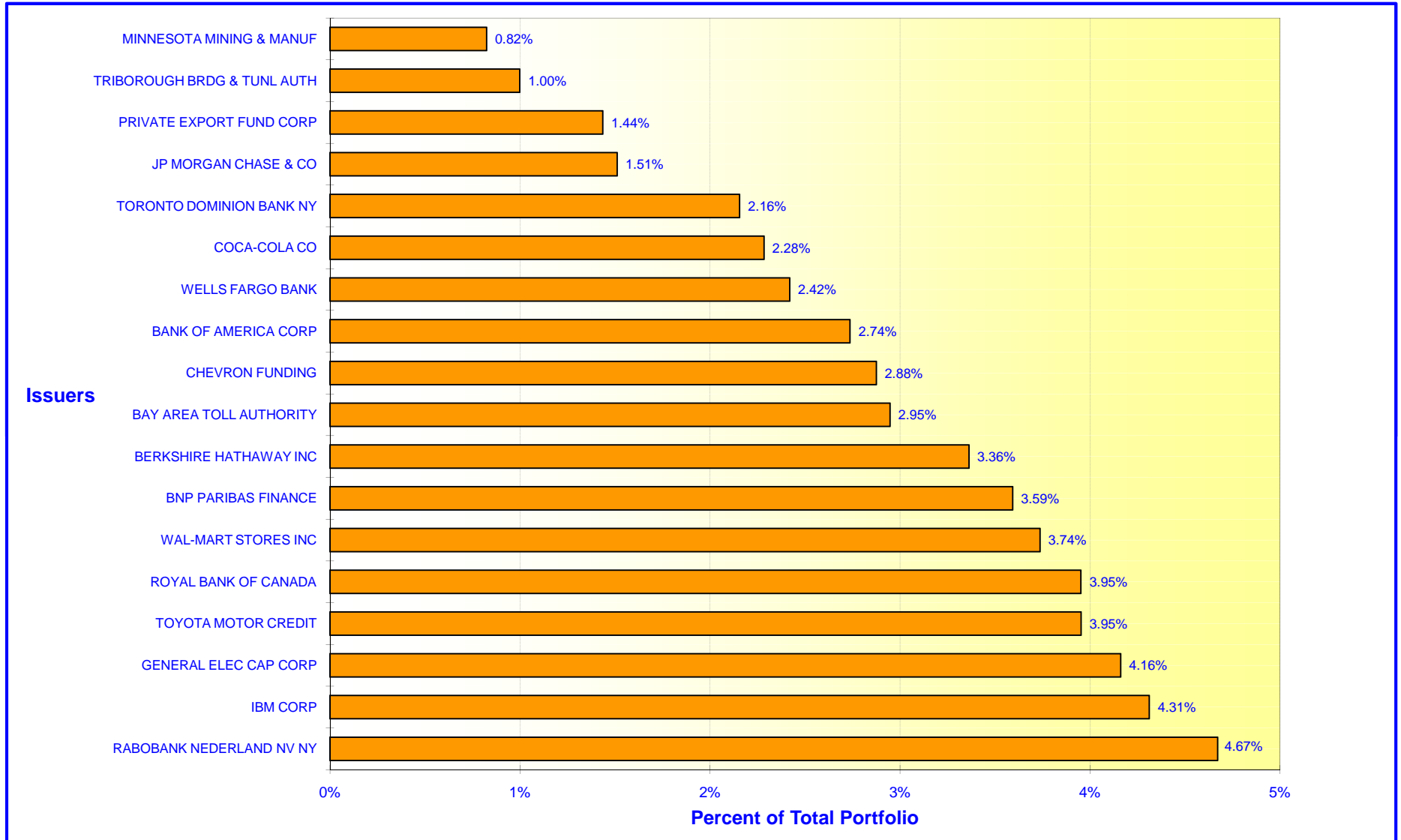
Floating Rate Notes are deemed to have a maturity date equal to their next interest reset date.

At 10/31/2010, Floating Rate Notes comprise 39.88%, 7.67%, and 48.18% of the O.C. Money Market Funds, Extended Funds, and Educational Money Market Fund respectively.

# ORANGE COUNTY TREASURER - TAX COLLECTOR

## ORANGE COUNTY MONEY MARKET FUND - ISSUER CONCENTRATION

October 31, 2010

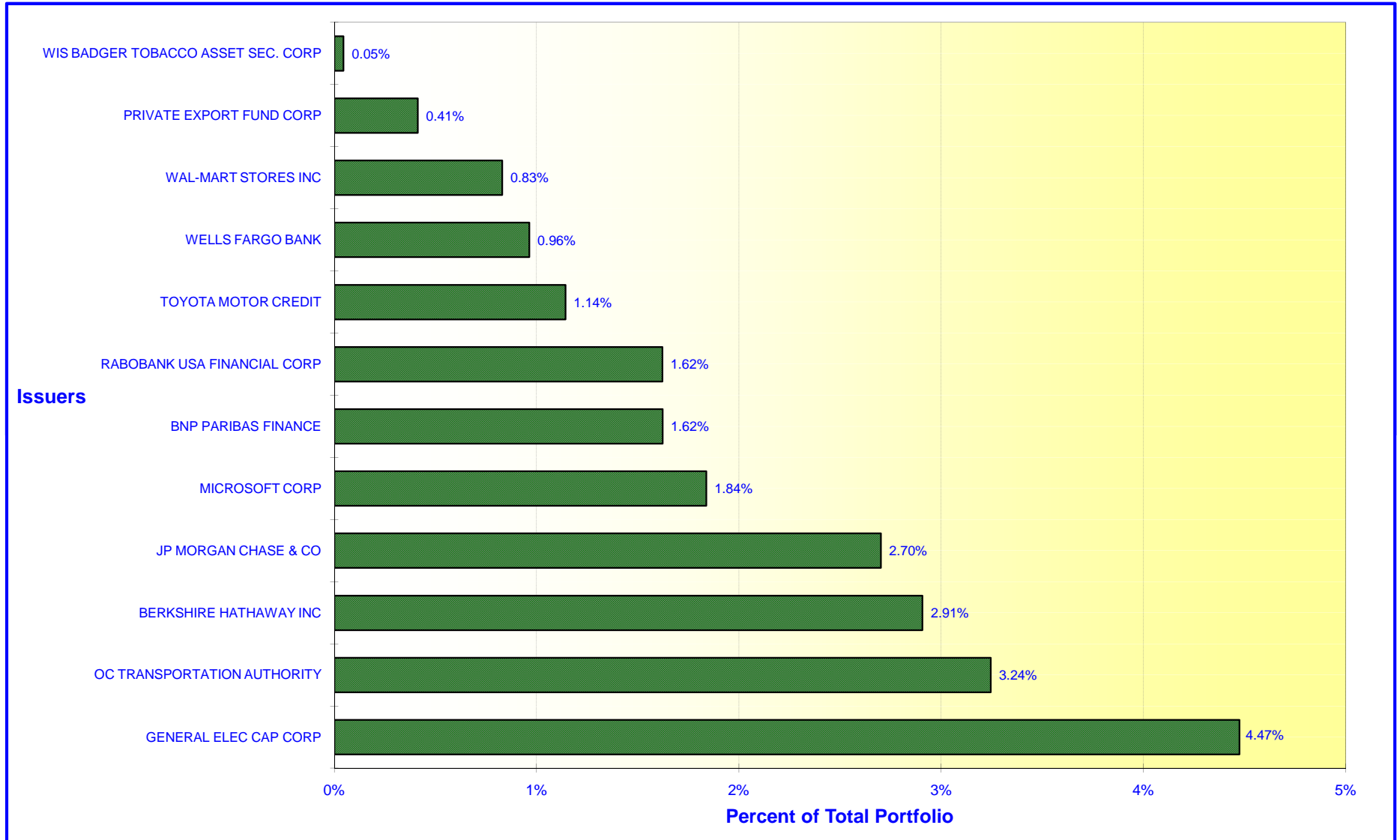




# ORANGE COUNTY TREASURER - TAX COLLECTOR

## ORANGE COUNTY EXTENDED FUND - ISSUER CONCENTRATION

October 31, 2010



# ORANGE COUNTY TREASURER - TAX COLLECTOR

## EDUCATIONAL MONEY MARKET FUND - ISSUER CONCENTRATION

October 31, 2010

