



# Boating Advisory

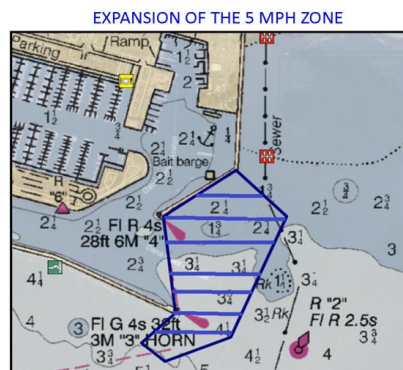
## Placement of New Buoys

In an effort to enhance safety for all vessels in the proximity of the Harbor entrance, the 5 MPH zone at the Harbor entrance will be expanded.

This new initiative was developed by the Boater Safety Forum, which included local boaters, paddlers, Yacht and Sailing Clubs, watercraft rental groups, commercial fishermen, OC Dana Point Harbor, the City of Dana Point, OC Sheriff's Harbor Patrol, and the U.S. Coast Guard and Auxiliary. After confirmation from the U.S. Coast Guard, Private Aids to Navigation Manager, it was determined that the expansion of the 5 MPH zone in this area will create a safer transition between the open ocean and the Harbor.

Test buoys will be placed beginning today, with the remainder of the buoys being placed next week to accomplish the creation of this expanded 5 MPH zone.

Please refer to the signage on the buoys noting that anchoring will not be allowed within 500 yards of the new expanded 5 MPH zone to keep the Harbor entrance area clear of anchored vessels. A map of the affected area as well as a sample buoy photo are attached for your reference.



If you wish to unsubscribe from future mailings, please call OC Dana Point Harbor at (949)923-2236.