



MILE SQUARE REGIONAL PARK MASTER PLAN

April 8, 2021



AGENDA

- Introductions
- Project Background
- Mile Square Regional Park Design
- Draft Environmental Impact Report
- Submitting Feedback and Comments
- Next Steps



INTRODUCTIONS

EPTDESIGN

LANDSCAPE ARCHITECT



GEOTECHNICAL ENGINEER



CIVIL ENGINEER

Jim Borer

ARBORIST



TRAFFIC ENGINEER



ENVIRONMENTAL PLANNING

MILE SQUARE REGIONAL PARK MASTER PLAN

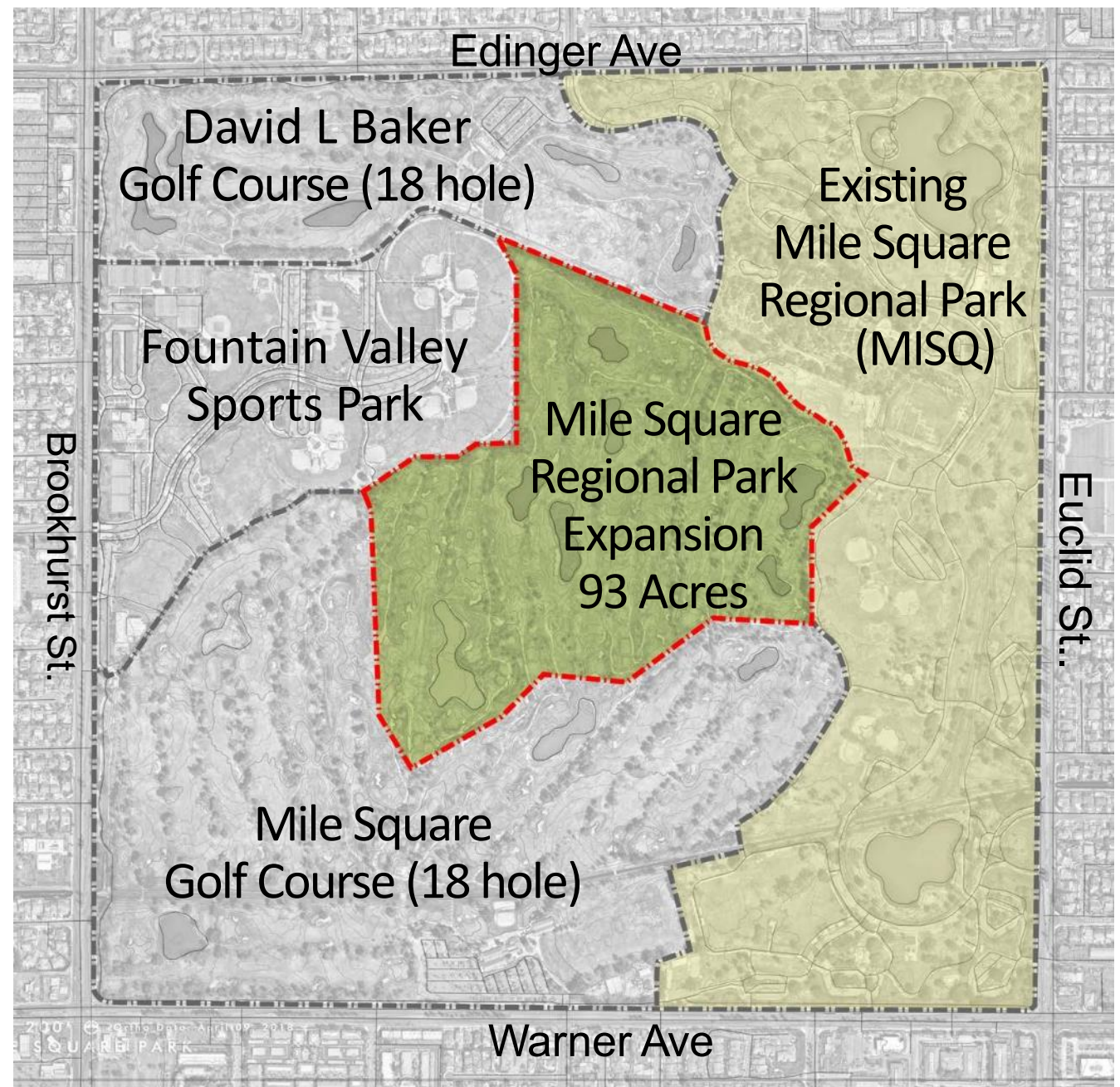
April 8, 2021



PROJECT BACKGROUND

Completed Milestones

- Research and Analysis (2018)
- Public Workshop and Outreach Events (Jan – Aug 2019)
 - Created two alternatives
- Public Open House (Aug 2019)
 - Selected draft final design
- Initiate CEQA EIR Process
 - Public Scoping Meeting (Sept 2020)



PUBLIC ENGAGEMENT

Workshops, Open House, Tabling, Surveys, Emails

- Public feedback
 - 5 events
 - collected 1,621 surveys
- Top choices for new amenities:
 - Walking Paths
 - Nature/Garden Areas
 - Picnic Areas
 - Lakes



EXPANSION IMPROVEMENTS



MILE SQUARE REGIONAL PARK MASTER PLAN

April 8, 2021



EXPANSION IMPROVEMENTS

Conceptual Master Plan

Legend

- ① The Great Meadow
- ② Multiuse Playfield
- ③ Civic Garden and Plaza
- ④ Adventure Play Area
- ⑤ Nature Camp
- ⑥ 100 ft. Min. Tree Buffer
- ⑦ Botanic Garden Pavilion
- ⑧ Botanical Garden
- ⑨ Grand Promenade
- ⑩ Perimeter Trail
- ⑪ Restrooms
- ⑫ Modified Pond
- ⑬ Visitor Center
- ⑭ Parking
- ⑮ Maintenance Yard



MILE SQUARE REGIONAL PARK MASTER PLAN

April 8, 2021

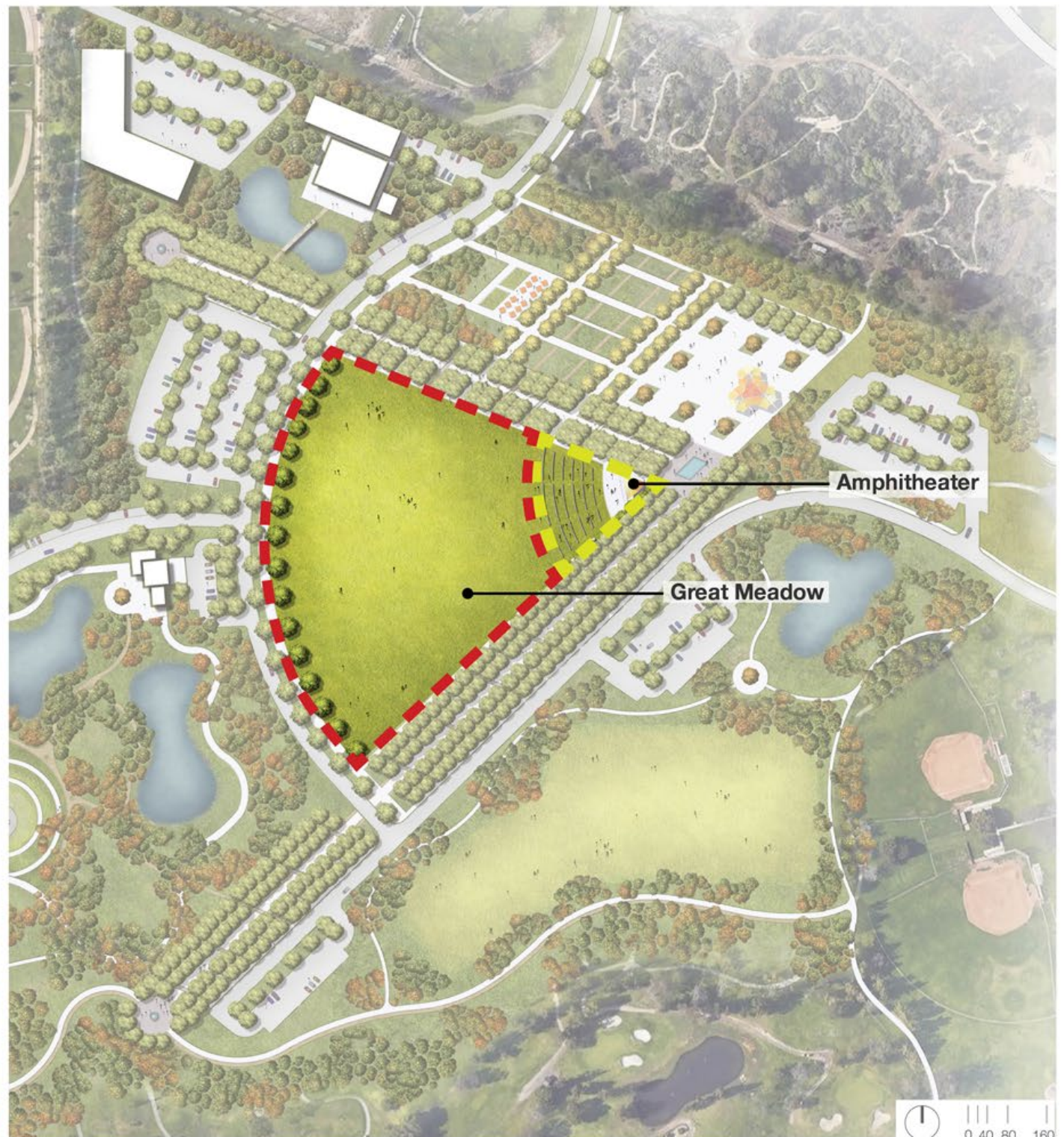


EXPANSION IMPROVEMENTS

Great Meadow and Amphitheater

Potential Activities:

- Great Meadow**
 - Large Concerts, Summer Concerts or Events
 - Car or Dog Show
 - Drone Flying
 - Model Airplane Flying
 - Lawn Games
- Amphitheater**
 - Smaller Concerts/Educational/Community Events
 - Graduation/Public Ceremonies
 - Corporate Events





MILE SQUARE REGIONAL PARK MASTER PLAN

April 8, 2021



EXPANSION IMPROVEMENTS

Grand Promenade

Potential Activities:

- Grand Promenade
 - Historical Elements/Plaques to Commemorate The History of Mile Square Park
 - Farmers Markets
 - Charity Walk/Events





BENCH SEATING AREAS

ALEE OF SHADE TREES

HISTORIC TIMELINE
MEMORIALIZED IN ACCENT
PAVING ALONG PROMENADE

30' GRAND PROMENADE
WITH DECOMPOSED GRANITE
AND CONCRETE PAVING

MILE SQUARE REGIONAL PARK MASTER PLAN

April 8, 2021



EXPANSION IMPROVEMENTS

Civic Plaza and Visitor Center

Potential Activities:

- Civic Plaza**
 - Farmers Market
 - Graduation/Other Ceremonies
 - Food Trucks
 - Outdoor Dining
 - Shade Pavilion
 - Festivals and Expos
- Visitor Center**
 - Restrooms
 - Park Information
 - Educational Exhibits
 - Seating





ICONIC SHADE PAVILION

OPEN CIVIC PLAZA FOR LARGE GATHERINGS AND EVENTS

FLEXIBLE SEATING AREAS

SEATWALLS INTEGRATED INTO GARDEN SPACES

MILE SQUARE REGIONAL PARK MASTER PLAN

April 8, 2021



EXPANSION IMPROVEMENTS

Botanic Garden and Adventure Play and Nature Camp

Potential Activities:

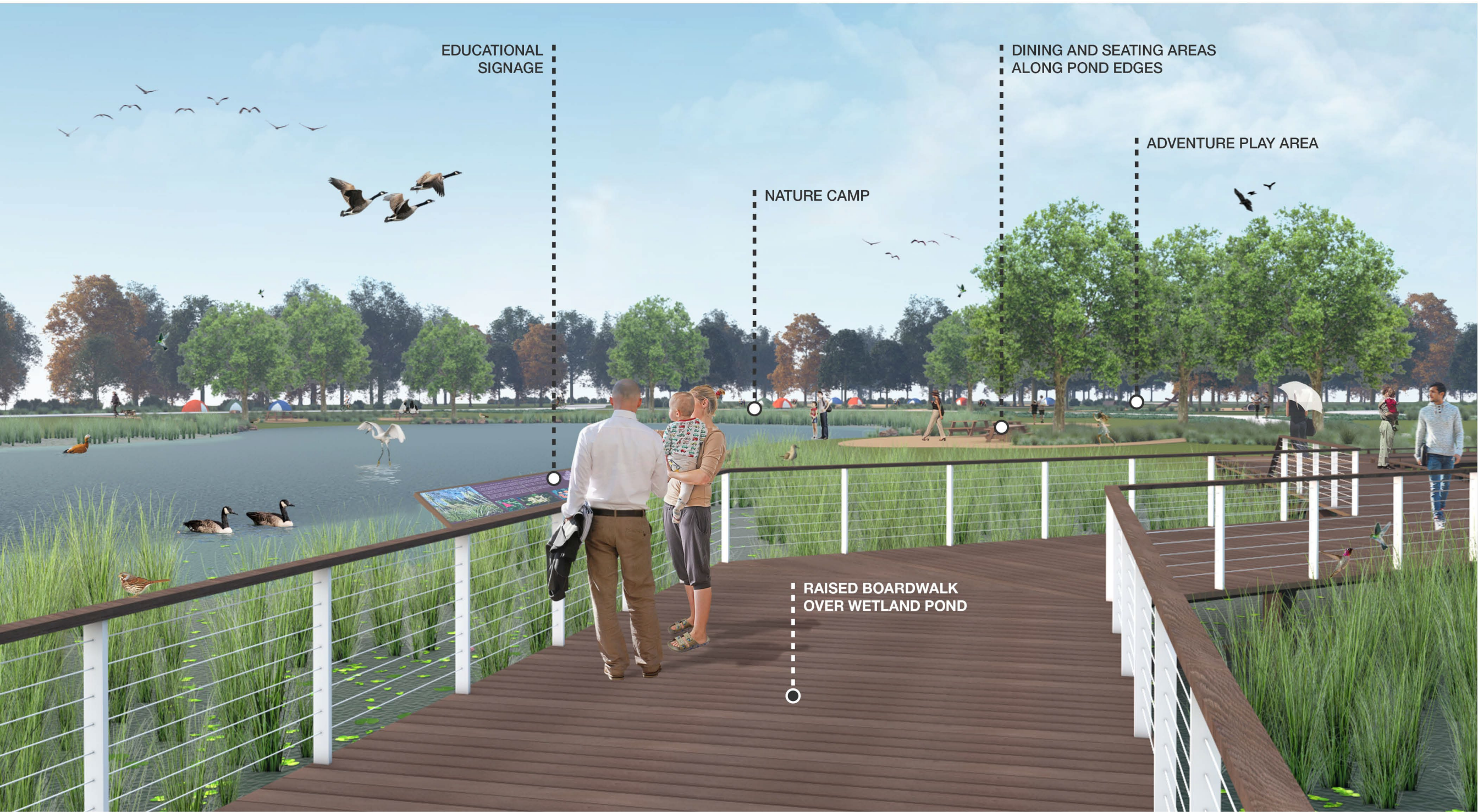
■ ■ Botanic Garden

- Garden Tours
- Educational Planting Workshops
- Native Planting Events
- Monarch Butterfly Event
- Lookout Knoll at Center of Park

■ ■ Adventure Play and Nature Camp

- Summer Camp
- Walking Trails Through Nature Areas
- Marsh/Lake Education Area
- Picnic Areas
- Playground with Opportunities for Creative Exploration and Connection to Nature
- Group Campground





EDUCATIONAL
SIGNAGE

DINING AND SEATING AREAS
ALONG POND EDGES

ADVENTURE PLAY AREA

NATURE CAMP

RAISED BOARDWALK
OVER WETLAND POND

MILE SQUARE REGIONAL PARK MASTER PLAN

April 8, 2021

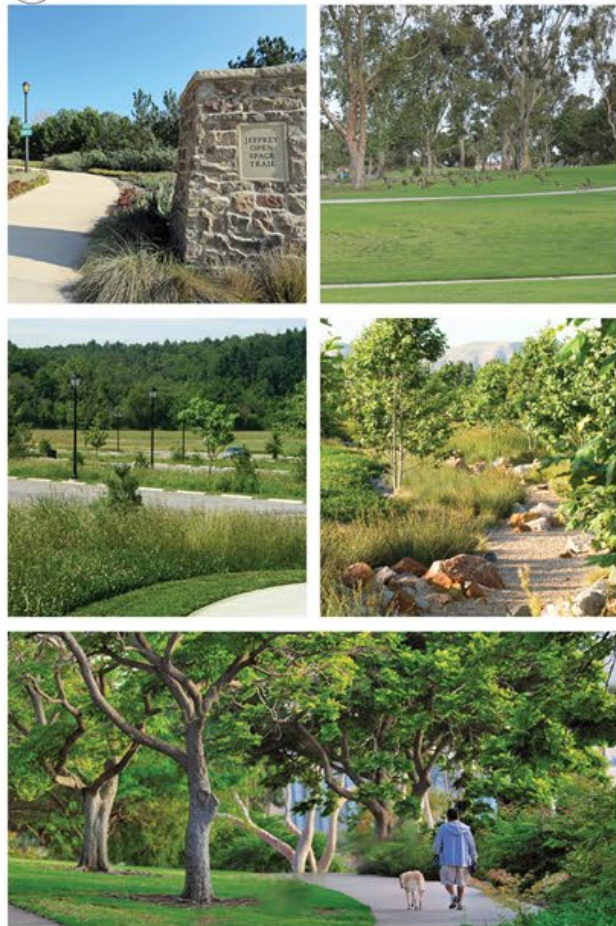


MISQ IMPROVEMENTS

Existing Regional Park Master Plan

Legend

- ① Proposed Egress Modifications
- ② Enhanced Entry at North Gate
- ③ Proposed Entry at Heil and Euclid
- ④ Enhanced Pedestrian Access
- ⑤ Enhanced Drainage Channel
- ⑥ Enhanced Perimeter Edge and Existing Trees
- ⑦ Maintenance Storage



MILE SQUARE REGIONAL PARK MASTER PLAN

April 8, 2021



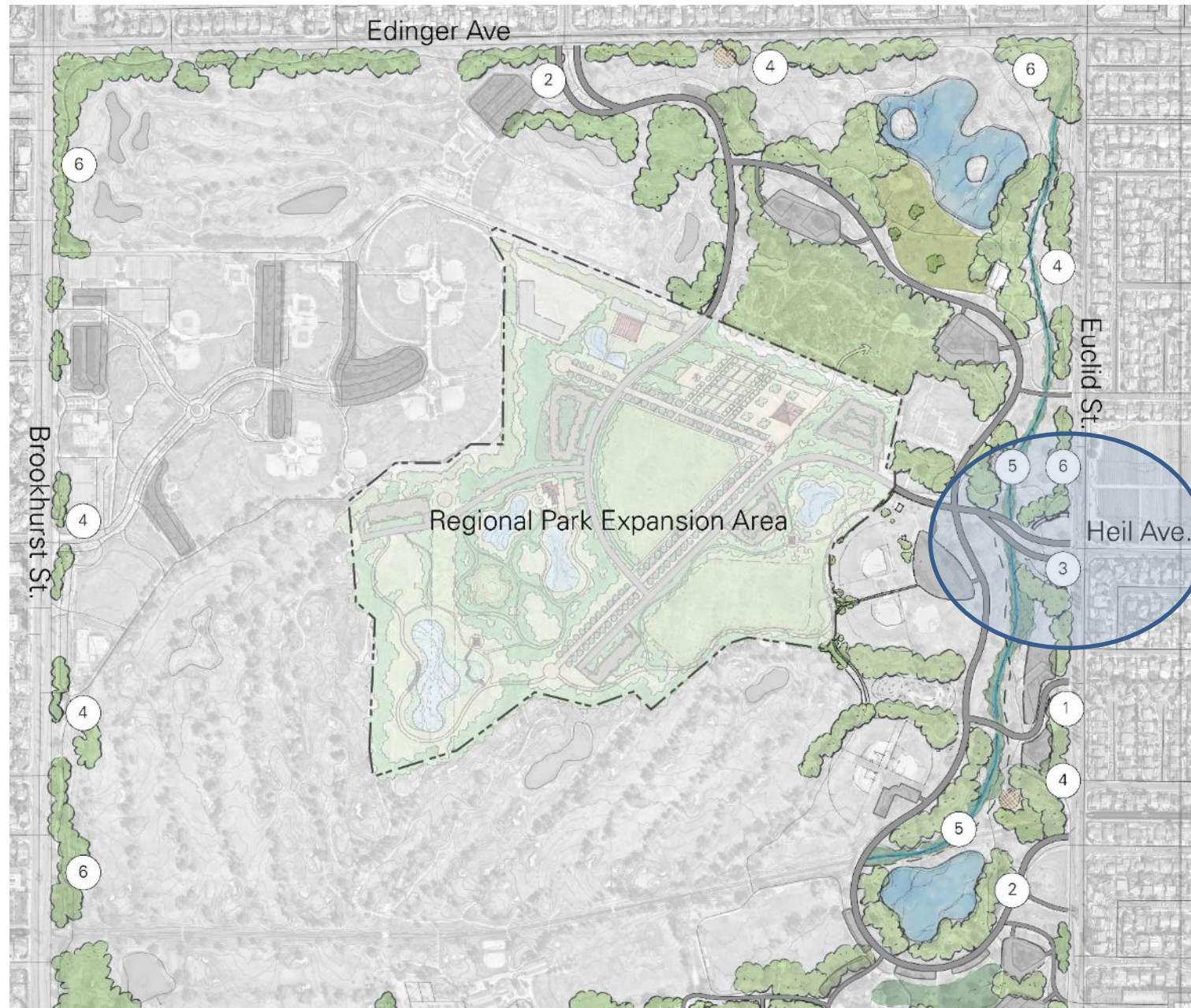
MISQ IMPROVEMENTS

Creek Channel



MISQ IMPROVEMENTS

New Park Entry and New Ranger Station



MILE SQUARE REGIONAL PARK MASTER PLAN

April 8, 2021



CIRCULATION

Vehicular Circulation and Parking

- Primary Vehicular
- Secondary Vehicular
- Vehicular Exit Only
- Vehicular and Pedestrian Entry/Exit
- Enhanced Vehicular and Pedestrian Entry/Exit
- Proposed Vehicular and Pedestrian Entry/Exit - Heil Ave. and Euclid St.
- Existing Parking
- Proposed Parking Lots
- Proposed Roadside Parking
- Proposed Overflow Parking

Parking Counts

Summary

On-Site - Proposed Parking Area	
Parking Lots.....	610
Roadside.....	65
Overflow.....	1,000
Total On-Site - Proposed.....	1,675

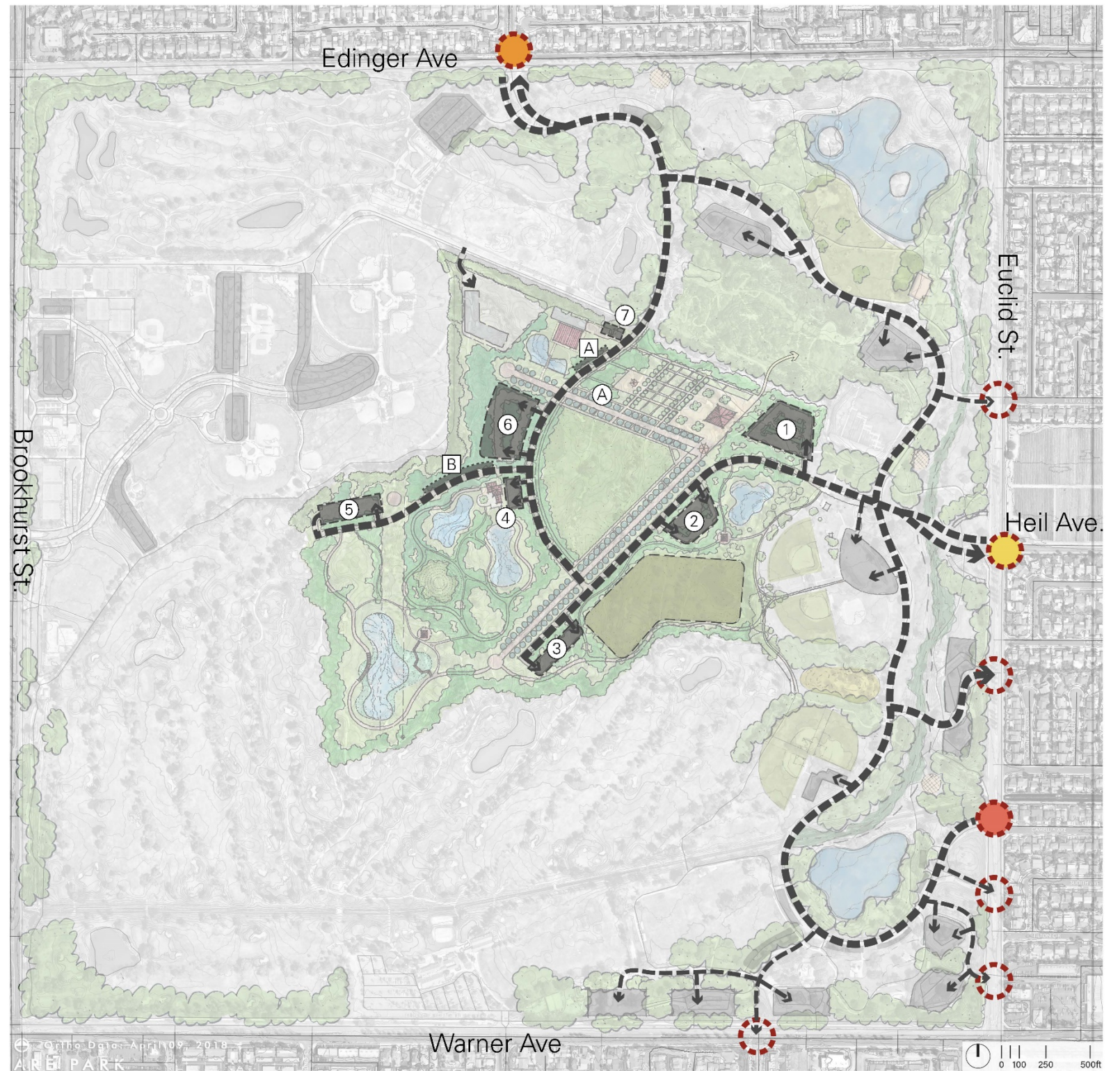
Total On-Site Existing.....	1,246
Total Parking.....	2,728

Proposed Lots

Lot #	Quantity
1	176
2	98
3	50
4	24
5	56
6	191
7	15

Proposed Roadside

Zone	Quantity
A	20
B	45



MILE SQUARE REGIONAL PARK MASTER PLAN

April 8, 2021



MISQ IMPROVEMENTS

Other Improvements

- reforestation
- signage and wayfinding
- improved walking paths
- storage



PURPOSE OF CEQA

The primary purposes of the California Environmental Quality Act (CEQA) are to:

- Disclose potential environmental effects.
- Identify how to avoid or reduce impacts.
- Prevent environmental damage through mitigation or alternatives
- Foster interagency coordination in review of projects.
- Enhance public participation.



ENVIRONMENTAL IMPACT REPORT (EIR)

Environmental Issues Addressed in the EIR

- Aesthetics
- Air Quality
- Biological Resources
- Cultural Resources
- Energy
- Geology, Soils, & Paleontological Resources
- Greenhouse Gas Emissions
- Hazards & Hazardous Materials
- Hydrology & Water Quality
- Land Use & Planning
- Noise & Vibration
- Public Services
- Recreation
- Transportation
- Tribal Cultural Resources
- Utilities & Service Systems
- Wildfire
- Cumulative Impacts
- Alternatives Analysis



CEQA ENVIRONMENTAL REVIEW PROCESS



MILE SQUARE REGIONAL PARK MASTER PLAN

April 8, 2021



PUBLIC FEEDBACK AND COMMENTS

How to submit comments:

Option 1 - Email: milesquareexpansion@ocparks.com

Option 2 - Submit Comment Letter:

OC Parks/Planning & Design Division
13042 Old Myford Road
Irvine, CA 92602

Option 3 - Voicemail: (714) 973-6865 or 866-OCPARKS

COMMENT PERIOD CLOSES – May 24, 2021

MILE SQUARE REGIONAL PARK MASTER PLAN

April 8, 2021



NEXT STEPS

- Preparation of Response to Comments and the Final EIR.
- Consideration of the Master Plan and EIR through public hearings before the OC Parks Commission & Board of Supervisors



THANK YOU

We look forward to your feedback.

<https://www.ocparks.com/parks/mile/expansion>

MILE SQUARE REGIONAL PARK MASTER PLAN

April 8, 2021

